



**MINING SERVICES & EQUIPMENT**

## **MINING POWERS PROGRESS ACE INDUSTRIES EMPOWERS MINING**



### **Safety & Sustainability**

At Ace Industries, we prioritize a safe and incident-free work environment in the mining industry. Our innovative solutions and responsible practices ensure the well-being of our employees and the sustainability of our operations.



### **Expertise & Integrity**

With a rich heritage dating back to 1932, we offer unparalleled expertise and honest service in the mining sector. Our emphasis on teamwork, continuous improvement, and integrity is evident in every aspect of our business. We believe in doing the right thing, always.



### **Tailored Solutions & Support**

Our specialized maintenance and proactive support services are designed to meet the unique challenges of mining operations. We are dedicated to providing tailored solutions that enhance efficiency, safety, and longevity of your equipment.



### **Durable Mining Equipment**

Discover the superior durability of our overhead cranes, engineered to withstand the rigorous demands of the mining industry. Built to resist extreme heat, dust, and moisture, our cranes maintain reliability in the toughest conditions, ensuring your productivity remains secure.

**40K+**

hours worked in 2023,  
providing comprehensive  
support and services

**50+**

mining customers served,  
each with unique require-  
ments and challenges

**660+**

units under contract,  
receiving the attention  
and care they deserve

*"It takes almost everything that everyone's got.  
And it takes that 100% every day to make it happen."*

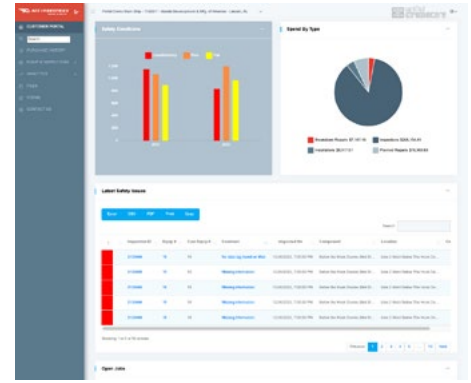
**Jeremy Nichols, Ace Mining Site Operations Manager**

**REPAIRS ★ PARTS ★ INSPECTIONS ★ MODERNIZATIONS ★ MANUFACTURING**

## CONVENIENT ONLINE ACCESS THROUGH OUR CUSTOMER PORTAL

All Ace mining inspection customers gain 24/7 access to your records and data through our user-friendly online customer portal.

You can check for safety issues, open jobs, and more right from the Dashboard. Other records are available, including purchase history and trends, equipment inspection logs, analytical data by category, and access to all your quotes.



## OUR MINING-FOCUSED SOLUTIONS

**Round-the-clock support** to keep your mining operations running smoothly 24/7

**Preventative maintenance programs** tailored to the harsh mining conditions

**Skilled technicians** experienced in servicing overhead cranes in mining applications, ensuring MSHA compliance at every step

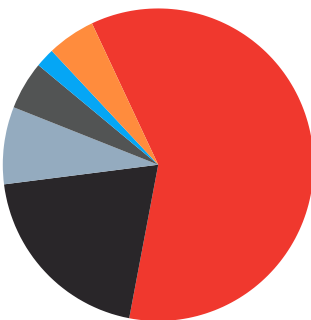
**Engineered field support and specialty services** to address complex challenges in mining settings

**Upgrades and modernizations** to enhance crane reliability, performance, and safety

**Custom equipment** tailored to meet the unique needs and requirements of your mining application.

**Quarterly workshops** to provide valuable insights, training, and best practices for maintaining crane reliability and safety in mining operations

## WHERE FAILURES HAPPEN MOST



60% are on the **Hoist**

20% are on the **Bridge**

2% are on the **Pendant / Remote**

8% are on the **Trolley**

5% are on the **Runway**

5% are on the **Jibs & Monorails**

**Elevate your mining safety and productivity with Ace Industries.**

Contact us at **(800) 733-2231** to schedule a consultation and discuss a customized crane reliability plan that prioritizes safety and MSHA compliance.

**aceindustries.com | (800) 733 - 2231**

Scan QR code for more information

