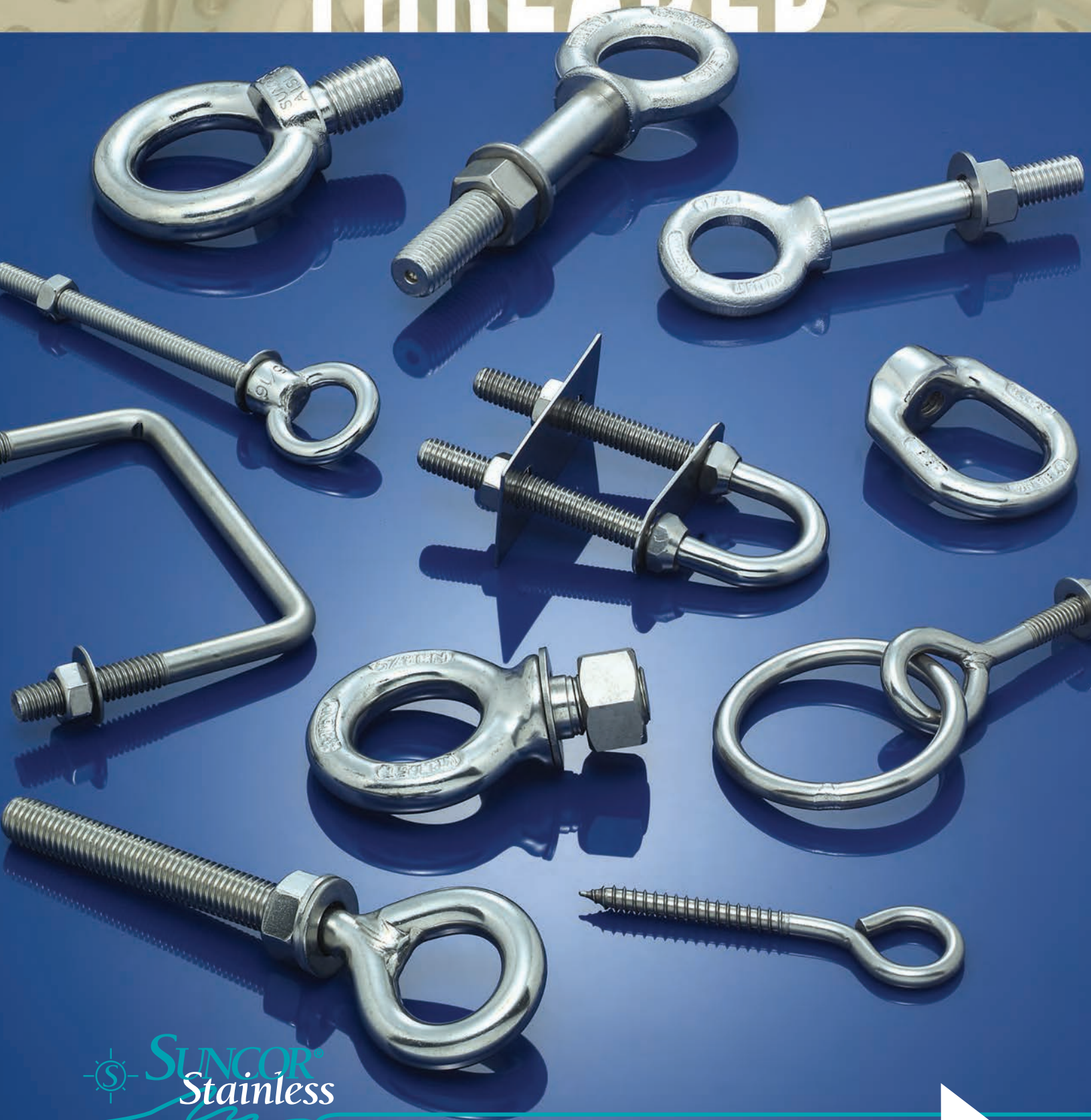


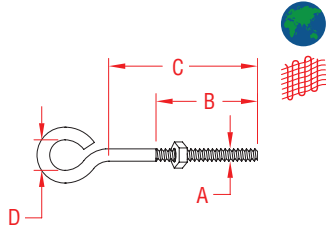
SUNCOR STAINLESS, INC.

THREADED



THREADED PRODUCTS

UNWELDED EYE BOLT 304 STAINLESS STEEL

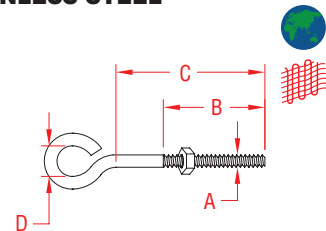


NOTE:
ALL THREADS ARE STANDARD "UNC".
ONE NUT IS INCLUDED.
EXTRA NUTS AND WASHERS ARE AVAILABLE FROM STOCK.

* CUSTOM SIZES ARE AVAILABLE.
PLEASE CALL OR SEND US YOUR SPECIFICATIONS.

ITEM	A	B	C	D	THREAD	WIRE DIA.	WLL	WT
	(size)						(lb)	(lb)
S0310-05025	3/16"	0.88"	1.00"	0.38"	10-24	0.16"	100	0.02
S0310-05050	3/16"	1.00"	2.00"	0.38"	10-24	0.16"	100	0.03
S0310-05075	3/16"	1.50"	3.00"	0.38"	10-24	0.16"	100	0.03
S0310-07025	1/4"	0.88"	1.00"	0.50"	1/4"-20	0.21"	200	0.04
S0310-07050	1/4"	1.25"	2.00"	0.50"	1/4"-20	0.21"	200	0.05
S0310-07075	1/4"	1.50"	3.00"	0.50"	1/4"-20	0.21"	200	0.06
S0310-07100	1/4"	2.50"	4.00"	0.50"	1/4"-20	0.21"	200	0.08
S0310-07125	1/4"	3.00"	5.00"	0.50"	1/4"-20	0.21"	200	0.08
S0310-07150	1/4"	4.00"	6.00"	0.50"	1/4"-20	0.21"	200	0.09
S0310-08013	5/16"	0.38"	0.50"	0.63"	5/16"-18	0.27"	350	0.07
S0310-08025	5/16"	0.88"	1.00"	0.63"	5/16"-18	0.27"	350	0.08
S0310-08050	5/16"	1.25"	2.00"	0.63"	5/16"-18	0.27"	350	0.09
S0310-08075	5/16"	1.50"	3.00"	0.63"	5/16"-18	0.27"	350	0.11
S0310-08100	5/16"	2.50"	4.00"	0.63"	5/16"-18	0.27"	350	0.13
S0310-10025	3/8"	0.88"	1.00"	0.75"	3/8"-16	0.33"	500	0.12
S0310-10050	3/8"	1.25"	2.00"	0.75"	3/8"-16	0.33"	500	0.15
S0310-10075	3/8"	1.50"	3.00"	0.75"	3/8"-16	0.33"	500	0.17
S0310-10100	3/8"	2.50"	4.00"	0.75"	3/8"-16	0.33"	500	0.19
S0310-10125	3/8"	3.00"	5.00"	0.75"	3/8"-16	0.33"	500	0.23
S0310-10150	3/8"	4.00"	6.00"	0.75"	3/8"-16	0.33"	500	0.24
S0310-13050	1/2"	1.50"	2.00"	1.00"	1/2"-13	0.43"	1,000	0.33
S0310-13100	1/2"	2.50"	4.00"	1.00"	1/2"-13	0.43"	1,000	0.42
S0310-13150	1/2"	4.00"	6.00"	1.00"	1/2"-13	0.43"	1,000	0.51
S0310-16175	5/8"	2.50"	7.00"	0.75"	5/8"-11	0.57"	1,400	1.10
S0310-20175	3/4"	3.00"	6.94"	0.88"	3/4"-10	0.68"	2,000	1.38
S0310-20200	3/4"	3.00"	8.94"	0.88"	3/4"-10	0.68"	2,000	1.59
S0310-20300	3/4"	3.00"	11.94"	0.88"	3/4"-10	0.68"	2,000	1.90

UNWELDED EYE BOLT 316 STAINLESS STEEL



NOTE:
ALL THREADS ARE STANDARD "UNC".
ONE NUT IS INCLUDED.
EXTRA NUTS AND WASHERS ARE AVAILABLE FROM STOCK.

* CUSTOM SIZES ARE AVAILABLE.
PLEASE CALL OR SEND US YOUR SPECIFICATIONS.

ITEM	A	B	C	D	THREAD	WIRE DIA.	WLL	WT
	(size)						(lb)	(lb)
S0310-03020X	#6	0.63"	0.75"	0.25"	6-32	0.12"	30	0.02
S0310-04028X	#8	1.00"	1.13"	0.25"	8-32	0.15"	50	0.02
S0310-05025X	3/16"	0.88"	1.00"	0.38"	10-24	0.16"	100	0.02
S0310-05040X	3/16"	1.25"	1.38"	0.31"	10-24	0.16"	100	0.03
S0310-05050X	3/16"	1.00"	2.00"	0.38"	10-24	0.16"	100	0.03
S0310-05075X	3/16"	1.50"	3.00"	0.38"	10-24	0.16"	100	0.03
S0310-07025X	1/4"	0.88"	1.00"	0.50"	1/4"-20	0.21"	200	0.04
S0310-07038X	1/4"	1.25"	1.50"	0.50"	1/4"-20	0.21"	200	0.04
S0310-07050X	1/4"	1.25"	2.00"	0.50"	1/4"-20	0.21"	200	0.05
S0310-07060X	1/4"	1.25"	2.50"	0.50"	1/4"-20	0.21"	200	0.05
S0310-07075X	1/4"	1.50"	3.00"	0.50"	1/4"-20	0.21"	200	0.06
S0310-07090X	1/4"	2.00"	3.50"	0.50"	1/4"-20	0.21"	200	0.07
S0310-07100X	1/4"	2.50"	4.00"	0.50"	1/4"-20	0.21"	200	0.08
S0310-07125X	1/4"	3.00"	5.00"	0.50"	1/4"-20	0.21"	200	0.08
S0310-07150X	1/4"	3.75"	6.00"	0.50"	1/4"-20	0.21"	200	0.09
S0310-08025X	5/16"	0.88"	1.00"	0.63"	5/16"-18	0.27"	350	0.07
S0310-08050X	5/16"	1.25"	2.00"	0.63"	5/16"-18	0.27"	350	0.08
S0310-08075X	5/16"	1.50"	3.00"	0.63"	5/16"-18	0.27"	350	0.10
S0310-08090X	5/16"	2.00"	3.50"	0.63"	5/16"-18	0.27"	350	0.11
S0310-08100X	5/16"	2.50"	4.00"	0.63"	5/16"-18	0.27"	350	0.13
S0310-08125X	5/16"	3.00"	5.00"	0.63"	5/16"-18	0.27"	350	0.15
S0310-08150X	5/16"	3.75"	6.00"	0.63"	5/16"-18	0.27"	350	0.17
S0310-10025X	3/8"	0.88"	1.00"	0.75"	3/8"-16	0.33"	500	0.16
S0310-10050X	3/8"	1.25"	2.00"	0.75"	3/8"-16	0.33"	500	0.18
S0310-10060X	3/8"	1.50"	2.50"	0.75"	3/8"-16	0.33"	500	0.19
S0310-10075X	3/8"	1.50"	3.00"	0.75"	3/8"-16	0.33"	500	0.19
S0310-10090X	3/8"	2.00"	3.50"	0.75"	3/8"-16	0.33"	500	0.20
S0310-10100X	3/8"	2.50"	4.00"	0.75"	3/8"-16	0.33"	500	0.21
S0310-10125X	3/8"	3.00"	5.00"	0.75"	3/8"-16	0.33"	500	0.24
S0310-10150X	3/8"	3.75"	6.00"	0.75"	3/8"-16	0.33"	500	0.26
S0310-10200X	3/8"	2.50"	7.38"	0.50"	3/8"-16	0.33"	500	0.29
S0310-10225X	3/8"	2.50"	9.38"	0.50"	3/8"-16	0.33"	500	0.33
S0310-10300X	3/8"	2.50"	11.38"	0.50"	3/8"-16	0.33"	500	0.37
S0310-13050X	1/2"	1.50"	2.00"	1.00"	1/2"-13	0.45"	1,000	0.35
S0310-13100X	1/2"	2.50"	4.00"	1.00"	1/2"-13	0.45"	1,000	0.44
S0310-13150X	1/2"	3.75"	6.00"	1.00"	1/2"-13	0.45"	1,000	0.53
S0310-13200X	1/2"	2.50"	7.19"	0.63"	1/2"-13	0.45"	1,000	0.60
S0310-13225X	1/2"	2.50"	9.19"	0.63"	1/2"-13	0.45"	1,000	0.69
S0310-13300X	1/2"	2.50"	11.19"	0.63"	1/2"-13	0.45"	1,000	0.78
S0310-16175X	5/8"	2.50"	7.00"	0.75"	5/8"-11	0.57"	1,400	1.10
S0310-20175X	3/4"	3.00"	6.94"	0.88"	3/4"-10	0.68"	2,000	1.38
S0310-20200X	3/4"	3.00"	8.94"	0.88"	3/4"-10	0.68"	2,000	1.59
S0310-20300X	3/4"	3.00"	11.94"	0.88"	3/4"-10	0.68"	2,000	1.90



ORDERS ONLY: 800-394-2222
(USA+CANADA)

Key:



Made in USA



Drop Forged



Precision Machined



Wire Formed



Suncor Exclusive



Import



Precision Cast



Stamped



Load Rated



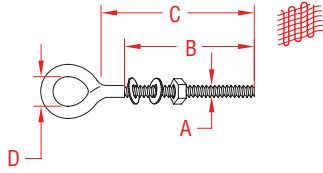
New Product

All logos, icons, images, measurements and descriptions are the sole property of Suncor Stainless, Inc.

© 2020 Suncor Stainless, Inc.

THREADED PRODUCTS

WELDED EYE BOLT 304 STAINLESS STEEL

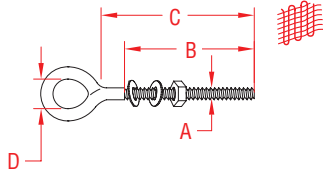


NOTE:
ALL THREADS ARE STANDARD "UNC".
ONE NUT AND TWO WASHERS ARE INCLUDED.
EXTRA NUTS AND WASHERS ARE AVAILABLE FROM STOCK.

* CUSTOM SIZES ARE AVAILABLE.
PLEASE CALL OR SEND US YOUR SPECIFICATIONS.

ITEM	A	B	C	D	THREAD	WIRE DIA.	WLL	WT
	(size)						(lb)	(lb)
S0312-05025	3/16"	0.85"	1"	0.37"	10-24	0.16"	250	0.02
S0312-05050	3/16"	1.50"	2"	0.37"	10-24	0.16"	250	0.03
S0312-05075	3/16"	1.75"	3"	0.37"	10-24	0.16"	250	0.03
S0312-07050	1/4"	1.50"	2"	0.50"	1/4"-20	0.21"	400	0.06
S0312-07075	1/4"	2.00"	3"	0.50"	1/4"-20	0.21"	400	0.07
S0312-07100	1/4"	2.00"	4"	0.50"	1/4"-20	0.21"	400	0.08
S0312-07125	1/4"	2.00"	5"	0.50"	1/4"-20	0.21"	400	0.08
S0312-07150	1/4"	2.00"	6"	0.50"	1/4"-20	0.21"	400	0.09
S0312-08050	5/16"	1.25"	2"	0.63"	5/16"-18	0.27"	600	0.10
S0312-08075	5/16"	2.00"	3"	0.63"	5/16"-18	0.27"	600	0.12
S0312-08100	5/16"	2.00"	4"	0.63"	5/16"-18	0.27"	600	0.13
S0312-08125	5/16"	2.00"	5"	0.63"	5/16"-18	0.27"	600	0.15
S0312-08150	5/16"	2.00"	6"	0.63"	5/16"-18	0.27"	600	0.17
S0312-10075	3/8"	2.00"	3"	0.75"	3/8"-16	0.33"	1,000	0.19
S0312-10100	3/8"	2.00"	4"	0.75"	3/8"-16	0.33"	1,000	0.21
S0312-10125	3/8"	2.00"	5"	0.75"	3/8"-16	0.33"	1,000	0.24
S0312-10150	3/8"	2.00"	6"	0.75"	3/8"-16	0.33"	1,000	0.26
S0312-13075	1/2"	2.00"	3"	1.00"	1/2"-13	0.43"	1,800	0.40
S0312-13100	1/2"	2.00"	4"	1.00"	1/2"-13	0.43"	1,800	0.44
S0312-13125	1/2"	2.00"	5"	1.00"	1/2"-13	0.43"	1,800	0.49
S0312-13150	1/2"	2.00"	6"	1.00"	1/2"-13	0.43"	1,800	0.53

WELDED EYE BOLT 316 STAINLESS STEEL

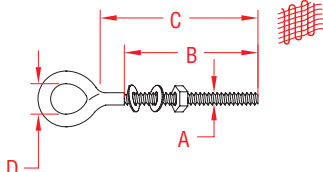


NOTE:
ALL THREADS ARE STANDARD "UNC".
ONE NUT AND TWO WASHERS ARE INCLUDED.
EXTRA NUTS AND WASHERS ARE AVAILABLE FROM STOCK.

* CUSTOM SIZES ARE AVAILABLE.
PLEASE CALL OR SEND US YOUR SPECIFICATIONS.

ITEM	A	B	C	D	THREAD	WIRE DIA.	WLL	WT
	(size)						(lb)	(lb)
S0312-13075X	1/2"	2.00"	3"	0.50"	1/2"-13	0.45"	1,800	0.40
S0312-13100X	1/2"	2.00"	4"	0.50"	1/2"-13	0.45"	1,800	0.44
S0312-13125X	1/2"	2.00"	5"	0.50"	1/2"-13	0.45"	1,800	0.49
S0312-13150X	1/2"	2.00"	6"	0.50"	1/2"-13	0.45"	1,800	0.53

METRIC WELDED EYE BOLT 304 STAINLESS STEEL



NOTE:
ALL THREADS ARE METRIC.
ONE NUT AND TWO WASHERS ARE INCLUDED.
EXTRA NUTS AND WASHERS ARE AVAILABLE FROM STOCK.

ITEM	A	B	C	D	WIRE DIA.	WLL	WT
	(size)					(lb)	(lb)
S0313-0560	5 mm	2.00"	2.25"	0.38"	0.17"	250	0.03
S0313-0580	5 mm	3.12"	3.25"	0.38"	0.17"	250	0.04
S0313-0640	6 mm	1.25"	1.50"	0.50"	0.21"	400	0.04
S0313-0660	6 mm	2.00"	2.25"	0.50"	0.21"	400	0.05
S0313-0680	6 mm	3.12"	3.25"	0.50"	0.21"	400	0.06
S0313-0810	8 mm	3.50"	4.00"	0.63"	0.28"	600	0.14
S0313-0880	8 mm	3.00"	3.25"	0.63"	0.28"	600	0.13
S0313-1010	10 mm	3.50"	4.00"	0.88"	0.36"	1,000	0.25
S0313-1015	10 mm	5.50"	6.00"	0.88"	0.36"	1,000	0.30
S0313-1210	12 mm	3.50"	4.00"	1.00"	0.42"	1,800	0.38
S0313-1215	12 mm	4.00"	6.00"	1.00"	0.42"	1,800	0.46

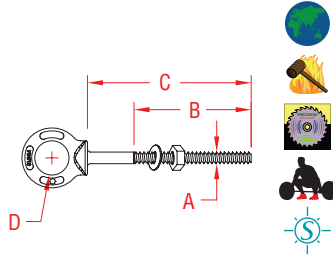
**LIMITED LIFETIME
WARRANTY**

SUNCOR STAINLESS®

TEL 508-732-9191 • FAX 508-732-9798 • ORDERS ONLY 800-394-2222
www.suncorstainless.com

THREADED PRODUCTS

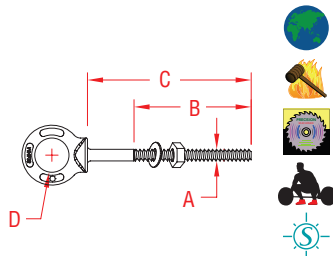
SHOULDER EYE BOLT 316-NM STAINLESS STEEL



NOTE:
MEETS ASME B30.26-2010 SECTION 26-2.0. EYE BOLTS HAVE FORGED MARKINGS OF 316-NM, SIZE AND WLL IN TONS. ALL THREADS ARE "UNC". ONE NUT AND WASHER ARE INCLUDED. EXTRA NUTS AND WASHERS ARE AVAILABLE FROM STOCK. SHAFT AND UNDERSIDE OF SHOULDER ARE MACHINED FOR PERFECT FIT AND SEATING.

ITEM	A	B	C	D	THREAD	WLL	WT
	(size)					(lb)	(lb)
S0314-0705	1/4"	1.50"	2.00"	0.50"	1/4"-20	500	0.06
S0314-0710	1/4"	2.50"	4.00"	0.50"	1/4"-20	500	0.08
S0314-0806	5/16"	1.50"	2.25"	0.63"	5/16"- 18	800	0.12
S0314-0810	5/16"	2.50"	4.25"	0.63"	5/16"- 18	800	0.14
S0314-1006	3/8"	1.50"	2.50"	0.75"	3/8"- 16	1,200	0.20
S0314-1012	3/8"	2.50"	4.50"	0.75"	3/8"- 16	1,200	0.26
S0314-1304	1/2"	1.25"	1.50"	1.00"	1/2"- 13	2,150	0.30
S0314-1308	1/2"	1.50"	3.25"	1.00"	1/2"- 13	2,150	0.40
S0314-1315	1/2"	3.00"	6.00"	1.00"	1/2"- 13	2,150	0.56
S0314-1603	5/8"	0.75"	1.00"	1.25"	5/8"- 11	3,440	0.60
S0314-1605	5/8"	1.75"	2.00"	1.25"	5/8"- 11	3,440	0.64
S0314-1610	5/8"	2.00"	4.00"	1.25"	5/8"- 11	3,440	0.80
S0314-1615	5/8"	3.00"	6.00"	1.25"	5/8"- 11	3,440	1.00
S0314-2003	3/4"	0.88"	1.00"	1.50"	3/4"- 10	5,140	0.94
S0314-2005	3/4"	1.75"	2.00"	1.50"	3/4"- 10	5,140	1.12
S0314-2012	3/4"	2.00"	4.50"	1.50"	3/4"- 10	5,140	1.40
S0314-2015	3/4"	3.00"	6.00"	1.50"	3/4"- 10	5,140	1.58
S0314-2213	7/8"	2.50"	5.00"	1.75"	7/8"- 9	7,130	2.32
S0314-2504	1"	1.38"	1.44"	2.00"	1"- 8	9,370	2.56
S0314-2506	1"	2.25"	2.50"	2.00"	1"- 8	9,370	2.64
S0314-2515	1"	3.00"	6.00"	2.00"	1"- 8	9,370	3.44

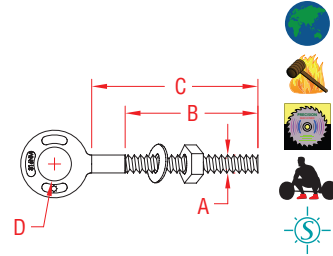
METRIC SHOULDER EYE BOLT 316-NM STAINLESS STEEL



NOTE:
MEETS ASME B30.26-2010 SECTION 26-2.0. EYE BOLTS HAVE FORGED MARKINGS OF 316-NM, SIZE AND WLL IN TONS. ALL THREADS ARE METRIC. ONE NUT AND WASHER ARE INCLUDED. EXTRA NUTS AND WASHERS ARE AVAILABLE FROM STOCK. SHAFT AND UNDERSIDE OF SHOULDER ARE MACHINED FOR PERFECT FIT AND SEATING.

ITEM	A	B	C	D	THREAD	WLL	WT
	(size)					(lb)	(lb)
S0314-0705M	M6	1.50"	2.00"	0.50"	M6 x 1.0	500	0.06
S0314-0710M	M6	2.50"	4.00"	0.50"	M6 x 1.0	500	0.08
S0314-0803M	M8	0.38"	1.38"	0.63"	M8 x 1.25	800	0.12
S0314-0806M	M8	1.50"	2.25"	0.63"	M8 x 1.25	800	0.12
S0314-0810M	M8	2.50"	4.25"	0.63"	M8 x 1.25	800	0.14
S0314-1002M	M10	0.75"	0.75"	0.75"	M10 x 1.5	1,200	0.20
S0314-1003M	M10	1.00"	1.50"	0.75"	M10 x 1.5	1,200	0.20
S0314-1006M	M10	1.50"	2.50"	0.75"	M10 x 1.5	1,200	0.20
S0314-1012M	M10	2.50"	4.50"	0.75"	M10 x 1.5	1,200	0.26
S0314-1304M	M12	1.00"	1.50"	1.00"	M12 x 1.75	2,150	0.30
S0314-1308M	M12	1.50"	3.25"	1.00"	M12 x 1.75	2,150	0.40
S0314-1315M	M12	3.00"	6.00"	1.00"	M12 x 1.75	2,150	0.56
S0314-1603M	M16	0.75"	1.00"	1.25"	M16 x 2.0	3,440	0.60
S0314-1605M	M16	1.75"	2.00"	1.25"	M16 x 2.0	3,440	0.64
S0314-1610M	M16	2.00"	4.00"	1.25"	M16 x 2.0	3,440	0.80
S0314-1615M	M16	3.00"	6.00"	1.25"	M16 x 2.0	3,440	1.00
S0314-2003M	M18	1.00"	1.00"	1.50"	M18 x 2.5	5,140	0.94
S0314-2005M	M18	1.75"	2.00"	1.50"	M18 x 2.5	5,140	1.12
S0314-2012M	M18	2.00"	4.50"	1.50"	M18 x 2.5	5,140	1.40
S0314-2015M	M18	3.00"	6.00"	1.50"	M18 x 2.5	5,140	1.58
S0314-2213M	M20	2.50"	5.00"	1.75"	M20 x 2.5	7,130	2.32
S0314-2504M	M24	1.38"	1.38"	2.00"	M24 x 3.0	9,370	2.56
S0314-2506M	M24	2.25"	2.50"	2.00"	M24 x 3.0	9,370	2.64
S0314-2515M	M24	3.00"	6.00"	2.00"	M24 x 3.0	9,370	3.44

PLAIN EYE BOLT 316-NM STAINLESS STEEL



NOTE:
MEETS ASME B30.26-2010 SECTION 26-2.0. EYE BOLTS HAVE FORGED MARKINGS OF 316-NM, SIZE AND WLL IN TONS. ALL THREADS ARE "UNC". ONE NUT AND WASHER ARE INCLUDED. EXTRA NUTS AND WASHERS ARE AVAILABLE FROM STOCK. SHAFT IS MACHINED FOR PERFECT FIT AND SEATING.

ITEM	A	B	C	D	THREAD	WLL	WT
	(size)					(lb)	(lb)
S0315-0705	1/4"	1.50"	2.00"	0.50"	1/4"-20	500	0.06
S0315-0710	1/4"	2.50"	4.00"	0.50"	1/4"-20	500	0.08
S0315-0806	5/16"	1.50"	2.25"	0.63"	5/16"- 18	800	0.08
S0315-0810	5/16"	2.50"	4.25"	0.63"	5/16"- 18	800	0.14
S0315-1002	3/8"	0.75"	0.75"	0.75"	3/8"- 16	1,200	0.18
S0315-1006	3/8"	1.50"	2.50"	0.75"	3/8"- 16	1,200	0.18
S0315-1012	3/8"	2.50"	4.50"	0.75"	3/8"- 16	1,200	0.26
S0315-1304	1/2"	1.25"	1.50"	1.00"	1/2"- 13	2,150	0.36
S0315-1308	1/2"	1.50"	3.25"	1.00"	1/2"- 13	2,150	0.48
S0315-1315	1/2"	3.00"	6.00"	1.00"	1/2"- 13	2,150	0.62
S0315-1603	5/8"	0.75"	1.00"	1.25"	5/8"- 11	3,440	0.62
S0315-1605	5/8"	1.75"	2.00"	1.25"	5/8"- 11	3,440	0.78
S0315-1610	5/8"	2.00"	4.00"	1.25"	5/8"- 11	3,440	0.95
S0315-1615	5/8"	3.00"	6.00"	1.25"	5/8"- 11	3,440	1.12
S0315-2003	3/4"	0.88"	1.00"	1.50"	3/4"- 10	5,140	1.06
S0315-2005	3/4"	1.75"	2.00"	1.50"	3/4"- 10	5,140	1.12
S0315-2012	3/4"	2.00"	4.50"	1.50"	3/4"- 10	5,140	1.52
S0315-2015	3/4"	3.00"	6.00"	1.50"	3/4"- 10	5,140	1.70
S0315-2213	7/8"	2.50"	5.00"	1.75"	7/8"- 9	7,130	2.26
S0315-2504	1"	1.38"	1.44"	2.00"	1"- 8	9,370	2.80
S0315-2506	1"	2.25"	2.50"	2.00"	1"- 8	9,370	3.20
S0315-2515	1"	3.00"	6.00"	2.00"	1"- 8	9,370	3.74



Key:



Made in USA

Import



Drop Forged

Precision Cast



Precision Machined

Stamped



Wire Formed



Load Rated



Suncor Exclusive



New Product

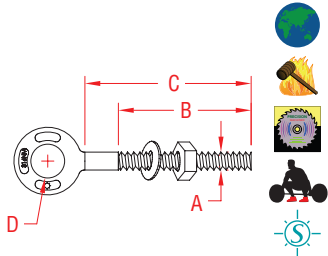
ORDERS ONLY: 800-394-2222
(USA+CANADA)

All logos, icons, images, measurements and descriptions are the sole property of Suncor Stainless, Inc.
© 2020 Suncor Stainless, Inc.

THREADED PRODUCTS

METRIC PLAIN EYE BOLT

316-NM STAINLESS STEEL

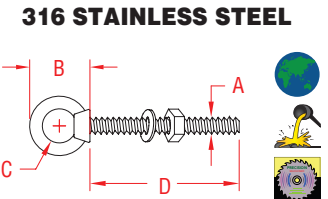


NOTE:
MEETS ASME B30.26-2010 SECTION 26-2.0. EYE BOLTS HAVE FORGED MARKINGS OF 316-NM, SIZE AND WLL IN TONS. ALL THREADS ARE METRIC. ONE NUT AND WASHER ARE INCLUDED. EXTRA NUTS AND WASHERS ARE AVAILABLE FROM STOCK. SHAFT IS MACHINED FOR PERFECT FIT AND SEATING.

ITEM	A	B	C	D	THREAD	WLL	WT
	(size)					(lb)	(lb)
S0315-0705M	M6	1.50"	2.00"	0.50"	M6 x 1.0	500	0.06
S0315-0710M	M6	2.50"	4.00"	0.50"	M6 x 1.0	500	0.08
S0315-0803M	M8	0.38"	1.38"	0.63"	M8 x 1.25	800	0.08
S0315-0806M	M8	1.50"	2.25"	0.63"	M8 x 1.25	800	0.08
S0315-0810M	M8	2.50"	4.25"	0.63"	M8 x 1.25	800	0.14
S0315-1002M	M10	0.75"	0.75"	0.75"	M10 x 1.5	1,200	0.18
S0315-1003M	M10	1.00"	1.50"	0.75"	M10 x 1.5	1,200	0.18
S0315-1006M	M10	1.50"	2.50"	0.75"	M10 x 1.5	1,200	0.18
S0315-1012M	M10	2.50"	4.50"	0.75"	M10 x 1.5	1,200	0.26
S0315-1304M	M12	1.00"	1.50"	1.00"	M12 x 1.75	2,150	0.36
S0315-1308M	M12	1.50"	3.25"	1.00"	M12 x 1.75	2,150	0.48
S0315-1315M	M12	3.00"	6.00"	1.00"	M12 x 1.75	2,150	0.62
S0315-1603M	M16	0.75"	1.00"	1.25"	M16 x 2.0	3,440	0.62
S0315-1605M	M16	1.75"	2.00"	1.25"	M16 x 2.0	3,440	0.78
S0315-1610M	M16	2.00"	4.00"	1.25"	M16 x 2.0	3,440	0.95
S0315-1615M	M16	3.00"	6.00"	1.25"	M16 x 2.0	3,440	1.12
S0315-2003M	M18	1.00"	1.00"	1.50"	M18 x 2.5	5,140	1.06
S0315-2005M	M18	1.75"	2.00"	1.50"	M18 x 2.5	5,140	1.12
S0315-2012M	M18	2.00"	4.50"	1.50"	M18 x 2.5	5,140	1.52
S0315-2015M	M18	3.00"	6.00"	1.50"	M18 x 2.5	5,140	1.70
S0315-2213M	M20	2.50"	5.00"	1.75"	M20 x 2.5	7,130	2.26
S0315-2504M	M24	1.38"	1.38"	2.00"	M24 x 3.0	9,370	2.80
S0315-2506M	M24	2.25"	2.50"	2.00"	M24 x 3.0	9,370	3.20
S0315-2515M	M24	3.00"	6.00"	2.00"	M24 x 3.0	9,370	3.74

HEAVY DUTY SPECIAL EYE BOLT

316 STAINLESS STEEL

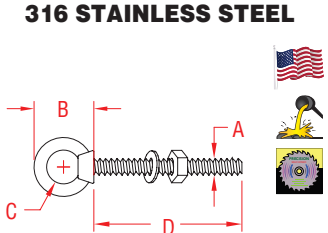


NOTE:
EYE BOLTS ARE FULLY THREADED WITH STANDARD "UNC" THREAD. ONE NUT AND WASHER ARE INCLUDED.

ITEM	A	B	C	D	WLL	WT
	(size)				(lb)	(lb)
S0319-0702	1/4"	1.20"	0.62"	2.00"	400	0.07
S0319-0712	1/4"	1.20"	0.62"	12.00"	400	0.17
S0319-0804	5/16"	1.55"	0.75"	4.00"	700	0.16
S0319-0812	5/16"	1.55"	0.75"	12.00"	700	0.29
S0319-1005	3/8"	1.92"	0.97"	5.00"	1,000	0.29
S0319-1012	3/8"	1.92"	0.97"	12.00"	1,000	0.46
S0319-1306	1/2"	2.38"	1.17"	6.00"	2,000	0.61
S0319-1312	1/2"	2.38"	1.17"	12.00"	2,000	0.87
S0319-1606	5/8"	2.81"	1.34"	6.00"	3,200	1.10
S0319-1612	5/8"	2.81"	1.34"	12.00"	3,200	1.48
S0319-2006	3/4"	3.36"	1.57"	6.00"	4,700	1.60
S0319-2012	3/4"	3.36"	1.57"	12.00"	4,700	2.20
S0319-2018	3/4"	3.36"	1.57"	18.00"	4,700	3.32
S0319-2509	1"	4.16"	2.00"	9.00"	7,000	3.78
S0319-2518	1"	4.16"	2.00"	18.00"	7,000	5.43

CUSTOM EYE BOLT SET

316 STAINLESS STEEL

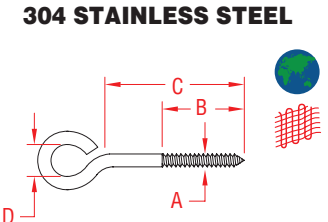


ITEM	A	B	C	D	THREAD	WLL
	(size)					(lb)
S0125-SP07	1/4"	1.20"	0.62"	CUSTOM	1/4"-20	400
S0125-SP08	5/16"	1.55"	0.75"	CUSTOM	5/16"-18	700
S0125-SP10	3/8"	1.92"	0.97"	CUSTOM	3/8"-16	1,000
S0125-SP13	1/2"	2.38"	1.17"	CUSTOM	1/2"-13	2,000
S0125-SP16	5/8"	2.81"	1.34"	CUSTOM	5/8"-11	3,200
S0125-SP20	3/4"	3.36"	1.57"	CUSTOM	3/4"-10	4,700
S0125-SP25	1"	3.55"	2.00"	CUSTOM	1"-8	7,500

HOW TO ORDER: WE CAN MAKE CUSTOM EYE BOLTS TO FIT YOUR SPECIFIC NEEDS. SELECT AN EYE BOLT FROM THE ITEM NUMBERS LISTED ABOVE AND SIMPLY SPECIFY THE DESIRED SHANK LENGTH (D) WHEN ORDERING.

LAG EYE SCREW

304 STAINLESS STEEL



ITEM	A	B	C	D	WIRE DIA.	WT
	(size)					(lb)
S0327-04025	5/32"	0.63"	0.75"	0.44"	0.16"	0.01
S0327-07032	1/4"	0.75"	1.00"	0.63"	0.23"	0.03
S0327-07065	1/4"	1.87"	2.50"	0.58"	0.23"	0.03
S0327-07075	1/4"	1.87"	3.00"	0.50"	0.23"	0.03
S0327-07100	1/4"	1.87"	4.00"	0.50"	0.23"	0.04
S0327-08032	5/16"	0.75"	1.25"	0.63"	0.26"	0.05
S0327-08065	5/16"	1.25"	2.50"	0.63"	0.26"	0.06
S0327-08075	5/16"	1.75"	3.00"	0.63"	0.26"	0.07
S0327-08100	5/16"	1.75"	4.00"	0.63"	0.26"	0.08
S0327-08125	5/16"	1.75"	5.00"	0.63"	0.26"	0.10
S0327-10065	3/8"	1.75"	2.50"	0.75"	0.32"	0.10

NOTE: SEE NOTE ON LAG RING BOLT S0329 (PAGE 93).

LIMITED LIFETIME WARRANTY

SUNCOR STAINLESS®

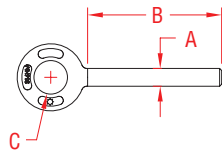
TEL 508-732-9191 • FAX 508-732-9798 • ORDERS ONLY 800-394-2222
www.suncorstainless.com

THREADED PRODUCTS

PLAIN EYE RIVET



316-NM STAINLESS STEEL



ITEM	A	B	C	WLL	WT
	(size)			(lb)	(lb)
S0315-R1304	1/2"	1.50"	1.00"	2,150	0.26
S0315-R1308	1/2"	3.25"	1.00"	2,150	0.37

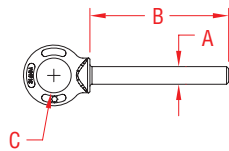
NOTE:
OTHER SIZES ARE AVAILABLE ON SPECIAL ORDER.
SEE PLAIN EYE BOLTS FOR SPECIAL SIZES (PAGE 90).

EYE RIVETS HAVE FORGED MARKINGS OF 316-NM, SIZE AND WLL IN TONS. SHAFT IS MACHINED FOR PERFECT FIT.

SHOULDER EYE RIVET



316-NM STAINLESS STEEL



ITEM	A	B	C	WLL	WT
	(size)			(lb)	(lb)
S0314-R1304	1/2"	1.50"	1.00"	2,150	0.27
S0314-R1308	1/2"	3.25"	1.00"	2,150	0.38

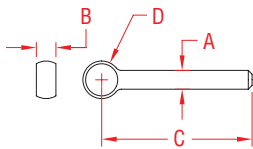
NOTE:
OTHER SIZES ARE AVAILABLE ON SPECIAL ORDER.
SEE SHOULDER EYE BOLTS FOR SPECIAL SPECS (PAGE 90).

EYE RIVETS HAVE FORGED MARKINGS OF 316-NM, SIZE AND WLL IN TONS. UNDERSIDE OF SHOULDER AND SHAFT ARE MACHINED FOR PERFECT SEATING AND FIT.

ROD END BLANK



304 STAINLESS STEEL

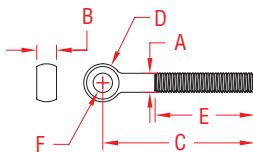


ITEM	SIZE	A	B	C	D	WT
						(lb)
S0360-10075	3/8"x 3"	0.38"	0.38"	3.00"	0.75"	0.13
S0360-10100	3/8"x 4"	0.38"	0.38"	4.00"	0.75"	0.16
S0360-13100	1/2"x 4"	0.50"	0.50"	4.00"	1.00"	0.30
S0360-13125	1/2"x 5"	0.50"	0.50"	5.00"	1.00"	0.36
S0360-13150	1/2"x 6"	0.50"	0.50"	6.00"	1.00"	0.42
S0360-16125	5/8"x 5"	0.63"	0.63"	5.00"	1.25"	0.61
S0360-16150	5/8"x 6"	0.63"	0.63"	6.00"	1.25"	0.68
S0360-16200	5/8"x 8"	0.63"	0.63"	8.00"	1.25"	0.82
S0360-20125	3/4"x 5"	0.75"	0.75"	5.00"	1.50"	0.86
S0360-20150	3/4"x 6"	0.75"	0.75"	6.00"	1.50"	1.04
S0360-20175	3/4"x 7"	0.75"	0.75"	7.00"	1.50"	1.22
S0360-20200	3/4"x 8"	0.75"	0.75"	8.00"	1.50"	1.40
S0360-22150	7/8"x 6"	0.88"	0.88"	6.00"	1.75"	1.46
S0360-25300	1"x 10"	1.00"	1.00"	10.00"	2.00"	2.85

CUSTOM ROD END



304 STAINLESS STEEL

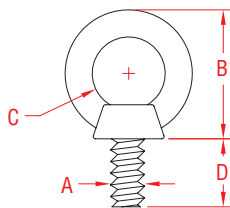


ITEM	SIZE	A	B	C	D	E	F
						(thread)	(eye)
S0360-10075-SP	3/8"x 3"	0.38"	0.38"	3.00"	0.75"	CUSTOM	CUSTOM
S0360-10100-SP	3/8"x 4"	0.38"	0.38"	4.00"	0.75"	CUSTOM	CUSTOM
S0360-13100-SP	1/2"x 4"	0.50"	0.50"	4.00"	1.00"	CUSTOM	CUSTOM
S0360-13125-SP	1/2"x 5"	0.50"	0.50"	5.00"	1.00"	CUSTOM	CUSTOM
S0360-13150-SP	1/2"x 6"	0.50"	0.50"	6.00"	1.00"	CUSTOM	CUSTOM
S0360-16125-SP	5/8"x 5"	0.63"	0.63"	5.00"	1.25"	CUSTOM	CUSTOM
S0360-16150-SP	5/8"x 6"	0.63"	0.63"	6.00"	1.25"	CUSTOM	CUSTOM
S0360-16200-SP	5/8"x 8"	0.63"	0.63"	8.00"	1.25"	CUSTOM	CUSTOM
S0360-20125-SP	3/4"x 5"	0.75"	0.75"	5.00"	1.50"	CUSTOM	CUSTOM
S0360-20150-SP	3/4"x 6"	0.75"	0.75"	6.00"	1.50"	CUSTOM	CUSTOM
S0360-20175-SP	3/4"x 7"	0.75"	0.75"	7.00"	1.50"	CUSTOM	CUSTOM
S0360-20200-SP	3/4"x 8"	0.75"	0.75"	8.00"	1.50"	CUSTOM	CUSTOM
S0360-22150-SP	7/8"x 6"	0.88"	0.88"	6.00"	1.75"	CUSTOM	CUSTOM
S0360-25300-SP	1"x 10"	1.00"	1.00"	10.00"	2.00"	CUSTOM	CUSTOM

MACHINE EYE BOLT



316 STAINLESS STEEL



ITEM	A	B	C	D	WLL	WT
	(size)				(lb)	(lb)
S0316-0007	1/4"	1.09"	0.62"	0.53"	400	0.05
S0316-0008	5/16"	1.34"	0.75"	0.58"	700	0.07
S0316-0010	3/8"	1.68"	0.95"	0.71"	1,000	0.13
S0316-0013	1/2"	2.00"	1.14"	0.86"	2,000	0.25
S0316-0016	5/8"	2.42"	1.32"	1.02"	3,200	0.45
S0316-0020	3/4"	2.78"	1.57"	1.14"	4,700	0.79
S0316-0025	1"	3.66"	1.95"	1.50"	7,500	1.65

NOTE:
THREADS ARE "UNC".



Key:



Made in USA



Drop Forged



Precision Machined



Wire Formed



Suncor Exclusive



Import



Precision Cast



Stamped



Load Rated



New Product

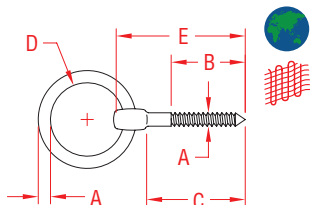
ORDERS ONLY: 800-394-2222
(USA+CANADA)

All logos, icons, images, measurements and descriptions are the sole property of Suncor Stainless, Inc.
© 2020 Suncor Stainless, Inc.

THREADED PRODUCTS

LAG RING BOLT

304 STAINLESS STEEL

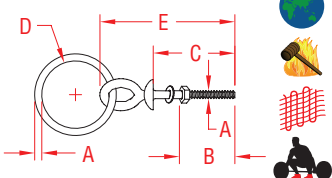


ITEM	A	B	C	D	E	WT
	(size)					(lb)
S0329-0007	1/4"	1.50"	2.25"	1.20"	2.75"	0.12
S0329-0008	5/16"	1.50"	2.25"	2.00"	3.00"	0.22
S0329-0010	3/8"	2.13"	3.13"	2.40"	3.86"	0.41
S0329-0013	1/2"	3.25"	4.75"	2.94"	5.65"	0.76

NOTE:
WOOD TYPE THREADS. THE WORKING LOAD HAS NOT BEEN ESTABLISHED SINCE IT DEPENDS ON THE WOOD, HOLE AND INSTALLATION.

RING BOLT SHOULDER

316 STAINLESS STEEL

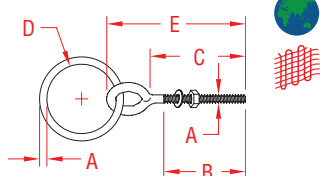


ITEM	A	B	C	D	E	WLL	WT
	(size)					(lb)	(lb)
S0330-0750	1/4"	1.50"	2.00"	1.75"	2.94"	250	0.14
S0330-0855	5/16"	1.50"	2.25"	2.00"	3.50"	400	0.27
S0330-1012	3/8"	2.50"	4.50"	2.50"	6.00"	600	0.54
S0330-1065	3/8"	1.50"	2.50"	2.50"	4.00"	600	0.48
S0330-1315	1/2"	3.00"	6.00"	3.00"	7.75"	1,100	1.17
S0330-1380	1/2"	1.50"	3.25"	3.00"	5.20"	1,100	1.06
S0330-1615	5/8"	3.00"	6.00"	3.00"	8.50"	2,000	1.95
S0330-2015	3/4"	3.00"	6.00"	3.00"	8.87"	2,600	2.89

NOTE:
DROP FORGED EYE BOLT WITH WELDED RING; ALL THREADS ARE STANDARD "UNC"; ONE NUT AND ONE WASHER ARE INCLUDED.

RING BOLT PLAIN

316 STAINLESS STEEL



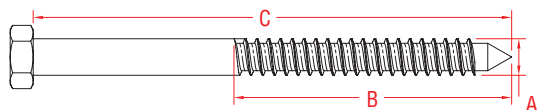
ITEM	A	B	C	D	E	WLL	WT
	(size)					(lb)	(lb)
S0331-0750	1/4"	1.50"	2.00"	1.75"	2.94"	250	0.12
S0331-0855	5/16"	1.50"	2.25"	2.00"	3.50"	400	0.21
S0331-1012	3/8"	2.50"	4.25"	2.50"	5.75"	600	0.38
S0331-1065	3/8"	1.50"	2.50"	2.50"	4.25"	600	0.42
S0331-1315	1/2"	3.00"	6.00"	3.00"	8.00"	1,100	0.94
S0331-1380	1/2"	1.50"	3.25"	3.00"	5.25"	1,100	0.83

NOTE:
WELDED EYE BOLT WITH WELDED RING; ALL THREADS ARE STANDARD "UNC"; ONE NUT AND ONE WASHER ARE INCLUDED.

12 MM AVAILABLE IN 4" OR 6". USE ITEM# S0328-1210 AND S0328-1215.

LAG SCREW

304 STAINLESS STEEL

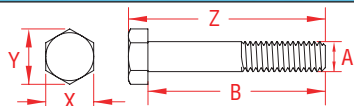


ITEM	A	B	C	WT
	(size)		(length)	(lb)
S0335-07150	1/4"	3.75"	6"	0.11
S0335-07250	1/4"	5.75"	10"	0.18
S0335-10150	3/8"	3.75"	6"	0.16
S0335-10250	3/8"	5.75"	10"	0.26
S0335-13150	1/2"	3.75"	6"	0.21
S0335-13250	1/2"	5.75"	10"	0.35
S0335-16300	5/8"	6.50"	12"	0.53

NOTE:
EXTREMELY CORROSION RESISTANT. WITH SHARP POINTS AND COARSE THREADS, THESE LAG SCREWS ARE DESIGNED TO PENETRATE AND GRIP WOOD. CAN BE USED IN DOCK AND PIER CONSTRUCTION. PILOT HOLE RECOMMENDED.

HEX HD CAP SCREW

316 STAINLESS STEEL



ITEM	A	B	X	Y	Z	WT
			(height)	(length)	(width)	(lb)
S0336-07100	1/4"	4.00"	0.43"	0.49"	4.15"	0.05
S0336-07150	1/4"	5.95"	0.43"	0.49"	6.10"	0.08
S0336-08120	5/16"	4.50"	0.50"	0.56"	4.63"	0.10
S0336-08150	5/16"	5.95"	0.50"	0.56"	6.15"	0.13
S0336-08250	5/16"	10.00"	0.50"	0.56"	10.22"	0.20
S0336-10100	3/8"	3.95"	0.56"	0.64"	4.20"	0.13
S0336-10150	3/8"	5.95"	0.56"	0.64"	6.15"	0.19
S0336-10250	3/8"	9.90"	0.56"	0.64"	10.15"	0.31
S0336-13120	1/2"	4.45"	0.74"	0.85"	4.75"	0.27
S0336-13150	1/2"	5.95"	0.74"	0.85"	6.25"	0.33
S0336-13250	1/2"	9.90"	0.74"	0.85"	10.15"	0.55
S0336-16150	5/8"	5.95"	0.93"	1.06"	6.35"	0.57
S0336-16300	5/8"	11.95"	0.93"	1.06"	12.35"	1.09

NOTE: ALL DIMENSIONS ARE NOMINAL (+/- 3%) AND ARE SUBJECT TO CHANGE WITHOUT NOTICE.

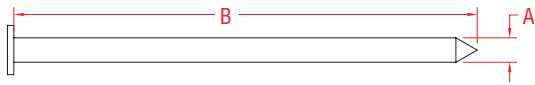
LIMITED LIFETIME WARRANTY

SUNCOR STAINLESS®

TEL 508-732-9191 • FAX 508-732-9798 • ORDERS ONLY 800-394-2222
www.suncorstainless.com

THREADED PRODUCTS

STAINLESS SPIKE 304 STAINLESS STEEL

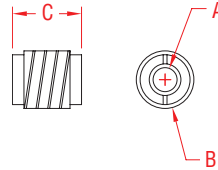


ITEM	A	B	WT
	(size)	(length)	
S0340-1006	3/8"	6.00"	0.19
S0340-1008	3/8"	8.00"	0.26
S0340-1010	3/8"	10.00"	0.32
S0340-1012	3/8"	12.00"	0.38

NOTE:
THESE HEAVY DUTY NAILS ARE GREAT FOR DOCK & PIER CONSTRUCTION. CORROSION RESISTANT FOR LONG LASTING STRENGTH.

THREAD INSERT, UNC

316 STAINLESS STEEL

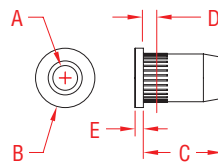


ITEM	A	B	C	HOLE SIZE	WT
	(size)				
S0385-0005	3/16"	0.46"	0.50"	3/8"	0.01
S0385-0007	1/4"	0.46"	0.50"	3/8"	0.01
S0385-0008	5/16"	0.60"	0.63"	1/2"	0.02
S0385-0010	3/8"	0.60"	0.63"	1/2"	0.03

NOTE:
SPECIAL FITTING WITH "KNIFE THREADS" ON THE OUTSIDE AND STANDARD UNC ON THE INSIDE. USED TO CONNECT HORIZONTAL WIRE ROPE TO WOODEN POSTS AND TO ATTACH OTHER FASTENERS TO WOOD, PLASTIC OR CARBON FIBER.

RIVET NUT INSERT

316 STAINLESS STEEL

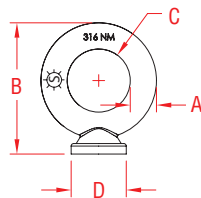


ITEM	A	B	C	D	E	THREAD	WT
	(max grip)						
UNF, RIGHT AND LEFT							
S0381-0007	1/4"	0.43"	0.58"	0.14"	0.06"	1/4" x 28 RH	0.01
S0381-L007	1/4"	0.43"	0.58"	0.14"	0.06"	1/4" x 28 LH	0.01
UNC, RIGHT AND LEFT							
S0382-0005	3/16"	0.35"	0.48"	0.12"	0.04"	10 x 24 RH	0.01
S0382-0007	1/4"	0.43"	0.58"	0.14"	0.06"	1/4" x 20 RH	0.01
S0382-L007	1/4"	0.43"	0.58"	0.14"	0.06"	1/4" x 20 LH	0.01
S0382-0008	5/16"	0.55"	0.64"	0.16"	0.06"	5/16" x 18 RH	0.01
S0382-0010	3/8"	0.63"	0.84"	0.22"	0.06"	3/8" x 16 RH	0.02

NOTE:
FOR INSTALLATION IN THIN WALL METAL PLATES OR TUBES. RIVET NUT INSTALLATION TOOL IS ITEM #S0380-0000 (PAGE 54).

PAD EYE

316-NM STAINLESS STEEL

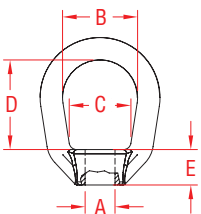


ITEM	A	B	C	D	WT
	(size)				
S0324-0005	3/16"	1.06"	0.50"	0.38"	0.04
S0324-0007	1/4"	1.31"	0.63"	0.56"	0.06
S0324-0008	5/16"	1.56"	0.75"	0.63"	0.10
S0324-0010	3/8"	2.00"	1.00"	0.87"	0.19
S0324-0013	1/2"	2.50"	1.25"	1.00"	0.38
S0324-0016	5/8"	3.25"	1.50"	1.38"	0.87
S0324-0020	3/4"	3.78"	1.75"	1.80"	1.52

NOTE:
WLL IS DEPENDENT ON QUALITY OF THE WELDING AND ATTACHED STRUCTURE. PAD EYES HAVE FORGED MARKINGS OF 316-NM AND SIZE. UNDERSIDE IS MACHINED FOR PERFECT SEATING.

LIFTING EYE NUT

316-NM STAINLESS STEEL

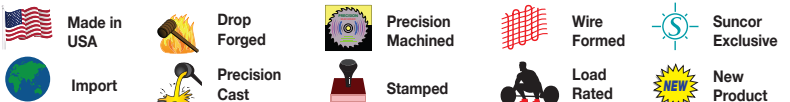


ITEM	A	B	C	D	E	WLL	WT
	(size)						
S0322-0007	1/4"	0.75"	0.59"	1.06"	0.38"	460	0.08
S0322-0008	5/16"	0.75"	0.59"	1.06"	0.38"	780	0.08
S0322-0010	3/8"	1.25"	1.00"	1.50"	0.63"	1,160	0.26
S0322-0013	1/2"	1.25"	1.00"	1.50"	0.63"	2,150	0.25
S0322-0016	5/8"	1.50"	1.19"	2.00"	0.69"	3,440	0.53
S0322-0020	3/4"	1.75"	1.25"	2.38"	0.88"	5,140	0.95

NOTE:
MEETS ASME B30.26-2010 SECTION 26-2.0. UNDERSIDE OF SHOULDER IS MACHINED FOR PERFECT SEATING. EYE NUTS HAVE FORGED MARKINGS OF 316-NM, SIZE AND WLL IN TONS. ALL THREADS ARE "UNC".



Key:

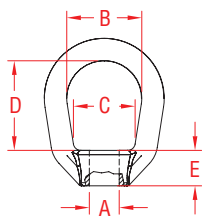
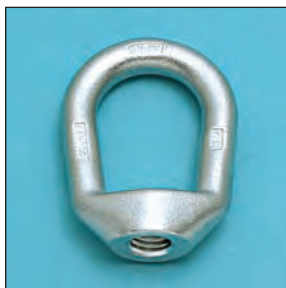


ORDERS ONLY: 800-394-2222
(USA+CANADA)

All logos, icons, images, measurements and descriptions are the sole property of Suncor Stainless, Inc.
© 2020 Suncor Stainless, Inc.

METRIC LIFTING EYE NUT

316-NM STAINLESS STEEL

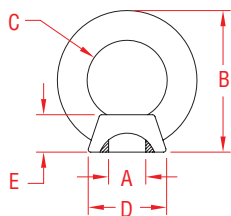


ITEM	A	B	C	D	E	WLL	WT
	(size)					(lb)	(lb)
S0322-M007	M6	0.75"	0.59"	1.06"	0.38"	460	0.08
S0322-M008	M8	0.75"	0.59"	1.06"	0.38"	780	0.08
S0322-M010	M10	1.25"	1.00"	1.50"	0.63"	1,160	0.26
S0322-M013	M12	1.25"	1.00"	1.50"	0.63"	2,150	0.25
S0322-M016	M16	1.50"	1.19"	2.00"	0.69"	3,440	0.53
S0322-M020	M18	1.75"	1.25"	2.38"	0.88"	5,140	0.95

NOTE:
MEETS ASME B30.26-2010 SECTION 26-2.0. UNDERSIDE OF SHOULDER IS MACHINED FOR PERFECT SEATING. EYE NUTS HAVE FORGED MARKINGS OF 316-NM, SIZE AND WLL IN TONS. ALL THREADS ARE "METRIC".

EYE NUT

316 STAINLESS STEEL

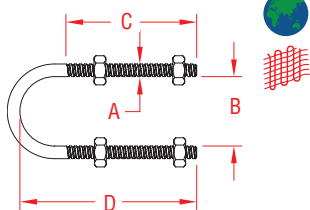


ITEM	A	B	C	D	E	WLL	WT
	(size)					(lb)	(lb)
THREADED - UNC							
S0321-0007	1/4"	1.20"	0.62"	0.50"	0.39"	400	0.04
S0321-0008	5/16"	1.55"	0.75"	0.62"	0.56"	700	0.08
S0321-0010	3/8"	1.92"	0.97"	0.76"	0.62"	1,000	0.13
S0321-0013	1/2"	2.38"	1.17"	0.95"	0.87"	2,000	0.26
S0321-0016	5/8"	2.81"	1.34"	1.19"	1.00"	3,200	0.53
S0321-0020	3/4"	3.36"	1.57"	1.32"	1.22"	4,700	0.75
S0321-0025	1"	4.16"	1.95"	1.70"	1.43"	7,500	1.49
UNTHREADED - BLANK							
S0321-U007	1/4"	1.20"	0.62"	0.50"	0.39"	400	0.04
S0321-U008	5/16"	1.55"	0.75"	0.62"	0.56"	700	0.08
S0321-U010	3/8"	1.92"	0.97"	0.76"	0.62"	1,000	0.13
S0321-U013	1/2"	2.38"	1.17"	0.95"	0.87"	2,000	0.26
S0321-U016	5/8"	2.81"	1.34"	1.19"	1.00"	3,200	0.53
S0321-U020	3/4"	3.36"	1.57"	1.32"	1.22"	4,700	0.75
S0321-U025	1"	4.16"	1.95"	1.70"	1.43"	7,500	1.49

NOTE:
UNTHREADED EYE NUT CAN BE WELDED INTO PLACE, USED TO MAKE A SWIVEL ASSEMBLY OR CUSTOM THREADED TO FIT YOUR APPLICATION. SUNCOR OFFERS THREADING SERVICE.

LONG U-BOLT

304 STAINLESS STEEL

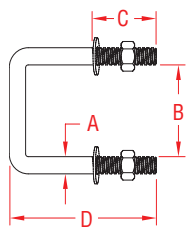


ITEM	A	THREAD	B	C	D	PIPE	WLL	WT
	(size)						(lb)	(lb)
S0352-07013	1/4"	1/4" - 20	0.88"	2.50"	2.94"	1/2"	435	0.10
S0352-07020	1/4"	1/4" - 20	1.13"	2.50"	3.19"	3/4"	435	0.11
S0352-07025	1/4"	1/4" - 20	1.38"	2.50"	3.44"	1"	435	0.11
S0352-10032	3/8"	3/8" - 16	1.69"	2.38"	3.72"	1-1/4"	1,090	0.28
S0352-10038	3/8"	3/8" - 16	2.00"	2.50"	4.00"	1-1/2"	1,090	0.30
S0352-10050	3/8"	3/8" - 16	2.44"	2.50"	4.44"	2"	1,090	0.33
S0352-13065	1/2"	1/2" - 13	2.94"	3.00"	5.22"	2-1/2"	2,020	0.73
S0352-13075	1/2"	1/2" - 13	3.56"	3.00"	5.75"	3"	2,020	0.79
S0352-13090	1/2"	1/2" - 13	4.06"	3.00"	6.25"	3-1/2"	2,020	0.85
S0352-13100	1/2"	1/2" - 13	4.56"	3.00"	6.75"	4"	2,020	0.90
S0352-13125	1/2"	1/2" - 13	5.63"	3.00"	7.81"	5"	2,020	1.03
S0352-16150	5/8"	5/8" - 11	6.75"	3.75"	9.69"	6"	3,230	1.92
S0352-16200	5/8"	5/8" - 11	8.75"	3.75"	11.50"	8"	3,230	2.22
S0352-20250	3/4"	3/4" - 10	10.88"	4.00"	13.88"	10"	4,830	4.08
S0352-22300	7/8"	7/8" - 9	12.88"	4.25"	16.13"	12"	6,730	5.70
S0352-22350	7/8"	7/8" - 9	14.13"	4.25"	17.50"	14"	6,730	6.70
S0352-22400	7/8"	7/8" - 9	16.13"	4.25"	19.25"	16"	6,730	7.50

NOTE:
EACH U-BOLT SET INCLUDES 4 NUTS, WASHERS ARE AVAILABLE SEPARATELY.

SQUARE U-BOLT

304 STAINLESS STEEL



ITEM	A	THREAD	B	C	D	WLL	WT
	(size)					(lb)	(lb)
S0356-102X3	3/8"	3/8" - 16	2.00"	1.50"	3.40"	1,090	0.25
S0356-102X5	3/8"	3/8" - 16	2.00"	3.00"	5.40"	1,090	0.35
S0356-102X7	3/8"	3/8" - 16	2.00"	3.75"	7.37"	1,090	0.45
S0356-104X3	3/8"	3/8" - 16	4.00"	1.50"	3.37"	1,090	0.30
S0356-104X5	3/8"	3/8" - 16	4.00"	3.00"	5.37"	1,090	0.40
S0356-104X7	3/8"	3/8" - 16	4.00"	3.75"	7.37"	1,090	0.50
S0356-106X5	3/8"	3/8" - 16	6.00"	3.00"	5.30"	1,090	0.45
S0356-106X7	3/8"	3/8" - 16	6.00"	3.75"	7.37"	1,090	0.55
S0356-106X9	3/8"	3/8" - 16	6.00"	5.63"	9.37"	1,090	0.65

NOTE:
EACH SET INCLUDES 2 NUTS AND 2 WASHERS. THREADS ARE "UNC" 3/8"-16.

LIMITED LIFETIME WARRANTY

SUNCOR STAINLESS®

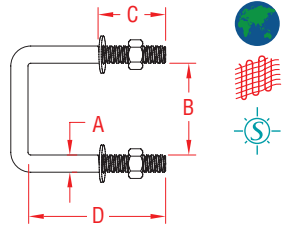
TEL 508-732-9191 • FAX 508-732-9798 • ORDERS ONLY 800-394-2222
www.suncorstainless.com

THREADED PRODUCTS

THREADED PRODUCTS

TRAILER U-BOLT

304 STAINLESS STEEL

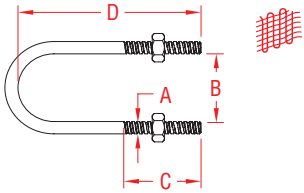


ITEM	A	THREAD	B	C	D	WLL	WT
	(size)					(lb)	(lb)
S0276-102X4	1/2"	1/2" - 13	2.13"	1.50"	4.00"	2,020	0.68
S0276-103X3	1/2"	1/2" - 13	3.13"	1.50"	3.00"	2,020	0.65
S0276-103X4	1/2"	1/2" - 13	3.13"	2.00"	4.00"	2,020	0.70
S0276-103X5	1/2"	1/2" - 13	3.13"	3.00"	5.00"	2,020	0.75
S0276-103X6	1/2"	1/2" - 13	3.13"	3.00"	6.00"	2,020	0.80
S0276-104X3	1/2"	1/2" - 13	4.13"	1.50"	3.00"	2,020	0.70

NOTE:
STAINLESS TRAILER U-BOLTS ARE INTENDED TO REPLACE OR UPGRADE ORIGINAL TRAILER PARTS. EACH SET INCLUDES 2 NUTS AND 2 WASHERS.

U-BOLT STANDARD

304 STAINLESS STEEL



ITEM	A	THREAD	B	C	D	PIPE	WLL	WT
	(size)						(lb)	(lb)
S0350-07010	1/4"	1/4" - 20	0.75"	0.63"	1.25"	3/8"	435	0.05
S0350-07013	1/4"	1/4" - 20	1.00"	1.00"	1.75"	1/2"	435	0.06
S0350-07020	1/4"	1/4" - 20	1.13"	1.00"	2.00"	3/4"	435	0.07
S0350-07025	1/4"	1/4" - 20	1.50"	1.38"	2.75"	1"	435	0.08
S0350-07032	1/4"	1/4" - 20	1.75"	1.38"	3.00"	1-1/4"	435	0.09
S0350-07038	1/4"	1/4" - 20	2.00"	1.38"	3.25"	1-1/2"	435	0.10
S0350-08013	5/16"	5/16" - 18	1.00"	1.38"	2.19"	1/2"	610	0.11
S0350-08026	5/16"	5/16" - 18	1.50"	1.00"	2.19"	1"	610	0.12
S0350-08032	5/16"	5/16" - 18	1.75"	1.13"	2.69"	1-1/4"	610	0.14
S0350-08038	5/16"	5/16" - 18	2.00"	1.00"	2.69"	1-1/2"	610	0.15
S0350-08050	5/16"	5/16" - 18	2.50"	1.00"	3.19"	2"	610	0.16
S0350-08065	5/16"	5/16" - 18	3.00"	1.00"	3.69"	2-1/2"	610	0.18
S0350-10013	3/8"	3/8" - 16	1.00"	1.25"	2.25"	1/2"	1,090	0.17
S0350-10020	3/8"	3/8" - 16	1.25"	1.25"	2.25"	3/4"	1,090	0.17
S0350-10025	3/8"	3/8" - 16	1.50"	1.25"	2.50"	1"	1,090	0.18
S0350-10032	3/8"	3/8" - 16	1.75"	1.25"	2.75"	1-1/4"	1,090	0.20
S0350-10038	3/8"	3/8" - 16	2.00"	1.25"	2.63"	1-1/2"	1,090	0.20
S0350-10050	3/8"	3/8" - 16	2.50"	1.25"	3.13"	2"	1,090	0.23
S0350-10065	3/8"	3/8" - 16	3.00"	1.25"	3.63"	2-1/2"	1,090	0.27
S0350-10075	3/8"	3/8" - 16	3.50"	1.25"	4.13"	3"	1,090	0.30
S0350-13065	1/2"	1/2" - 13	3.00"	1.63"	4.50"	2-1/2"	2,020	0.59
S0350-13075	1/2"	1/2" - 13	3.50"	1.50"	5.00"	3"	2,020	0.65
S0350-13090	1/2"	1/2" - 13	4.00"	1.50"	5.50"	3-1/2"	2,020	0.69
S0350-13100	1/2"	1/2" - 13	4.50"	1.50"	6.00"	4"	2,020	0.76
S0350-13125	1/2"	1/2" - 13	5.63"	2.00"	7.25"	5"	2,020	0.93
S0350-13150	1/2"	1/2" - 13	6.75"	2.00"	8.38"	6"	2,020	1.04
S0350-13200	1/2"	1/2" - 13	8.75"	2.00"	10.38"	8"	2,020	1.27

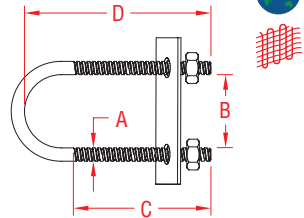
NOTE:
ALL THREADS ARE UNC AND SET INCLUDES 2 NUTS.
EXTRA NUTS AND WASHERS ARE AVAILABLE FROM STOCK.

**BULK QUANTITY OF CUSTOM SIZES
MAY BE SPECIAL ORDERED.**

**CALL OR SEND US
YOUR REQUIREMENTS FOR A PRICE
AND DELIVERY SCHEDULE.**

U-BOLT WITH PLATE

304 STAINLESS STEEL



ITEM	A	THREAD	B	C	D	PIPE	WLL	WT
	(size)						(lb)	(lb)
S0351-07010	1/4"	1/4" - 20	0.75"	0.63"	1.25"	3/8"	435	0.07
S0351-07013	1/4"	1/4" - 20	1.00"	1.00"	1.75"	1/2"	435	0.09
S0351-07020	1/4"	1/4" - 20	1.13"	1.00"	2.00"	3/4"	435	0.10
S0351-07025	1/4"	1/4" - 20	1.50"	1.38"	2.75"	1"	435	0.12
S0351-07032	1/4"	1/4" - 20	1.75"	1.38"	3.00"	1-1/4"	435	0.13
S0351-07038	1/4"	1/4" - 20	2.00"	1.38"	3.25"	1-1/2"	435	0.14
S0351-08013	5/16"	5/16" - 18	1.00"	1.38"	2.19"	1/2"	610	0.14
S0351-08026	5/16"	5/16" - 18	1.50"	1.00"	2.19"	1"	610	0.15
S0351-08032	5/16"	5/16" - 18	1.75"	1.13"	2.69"	1-1/4"	610	0.18
S0351-08038	5/16"	5/16" - 18	2.00"	1.00"	2.69"	1-1/2"	610	0.20
S0351-08050	5/16"	5/16" - 18	2.50"	1.00"	3.19"	2"	610	0.22
S0351-08065	5/16"	5/16" - 18	3.00"	1.00"	3.69"	2-1/2"	610	0.25
S0351-10013	3/8"	3/8" - 16	1.00"	1.25"	2.25"	1/2"	1,090	0.20
S0351-10020	3/8"	3/8" - 16	1.25"	1.25"	2.25"	3/4"	1,090	0.21
S0351-10025	3/8"	3/8" - 16	1.50"	1.25"	2.50"	1"	1,090	0.23
S0351-10032	3/8"	3/8" - 16	1.75"	1.25"	2.75"	1-1/4"	1,090	0.25
S0351-10038	3/8"	3/8" - 16	2.00"	1.25"	2.63"	1-1/2"	1,090	0.26
S0351-10050	3/8"	3/8" - 16	2.50"	1.25"	3.13"	2"	1,090	0.30
S0351-10065	3/8"	3/8" - 16	3.00"	1.25"	3.63"	2-1/2"	1,090	0.33
S0351-10075	3/8"	3/8" - 16	3.50"	1.25"	4.13"	3"	1,090	0.38
S0351-13065	1/2"	1/2" - 13	3.00"	1.63"	4.50"	2-1/2"	2,020	0.70
S0351-13075	1/2"	1/2" - 13	3.50"	1.50"	5.00"	3"	2,020	0.74
S0351-13090	1/2"	1/2" - 13	4.00"	1.50"	5.50"	3-1/2"	2,020	0.82
S0351-13100	1/2"	1/2" - 13	4.50"	1.50"	6.00"	4"	2,020	0.90
S0351-13125	1/2"	1/2" - 13	5.63"	2.00"	7.25"	5"	2,020	1.06
S0351-13150	1/2"	1/2" - 13	6.75"	2.00"	8.38"	6"	2,020	1.18
S0351-13200	1/2"	1/2" - 13	8.75"	2.00"	10.38"	8"	2,020	1.44

NOTE:
ALL THREADS ARE UNC AND SET INCLUDES 2 NUTS.
EXTRA NUTS AND WASHERS ARE AVAILABLE FROM STOCK.

**BULK QUANTITY OF CUSTOM SIZES
MAY BE SPECIAL ORDERED.**

**CALL OR SEND US
YOUR REQUIREMENTS FOR A PRICE
AND DELIVERY SCHEDULE.**



Key:



Made in USA



Drop Forged



Precision Machined



Wire Formed



Suncor Exclusive



Import



Precision Cast



Stamped



Load Rated



New Product

All logos, icons, images, measurements and descriptions are the sole property of Suncor Stainless, Inc.

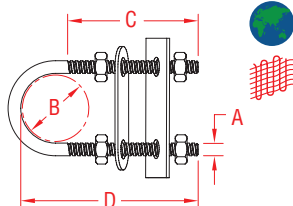
© 2020 Suncor Stainless, Inc.

ORDERS ONLY: 800-394-2222
(USA+CANADA)

BOW / STERN EYE



304 STAINLESS STEEL



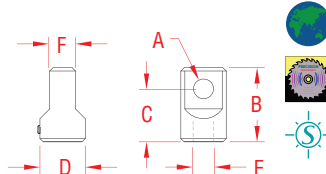
ITEM	A	THREAD	B	C	D	PULL	WT
	(size)					(strength - lb)	(lb)
S0353-10055	3/8"	3/8" - 16	1.03"	1.13"	2.25"	3,200	0.25
S0353-10090	3/8"	3/8" - 16	1.03"	3.00"	4.00"	3,200	0.30
S0353-10115	3/8"	3/8" - 16	1.03"	4.00"	5.00"	3,200	0.40
S0353-11120	7/16"	7/16" - 14	1.50"	3.44"	5.00"	3,800	0.60
S0353-11150	7/16"	7/16" - 14	1.50"	4.50"	6.00"	3,800	0.65
S0353-13095	1/2"	1/2" - 13	1.31"	2.50"	3.87"	4,800	0.60
S0353-13120	1/2"	1/2" - 13	1.31"	3.44"	4.85"	4,800	0.70
S0353-13150	1/2"	1/2" - 13	1.31"	4.75"	6.00"	4,800	0.80
S0353-13180	1/2"	1/2" - 13	1.31"	6.00"	7.25"	4,800	0.95

NOTE:
EACH U-BOLT SET INCLUDES 4 NUTS (2 STANDARD AND 2 BEVELED), 1 BOW PLATE AND 1 STERN PLATE. THREADS ARE "UNC".

HOIST ANCHOR BASE



316 STAINLESS STEEL



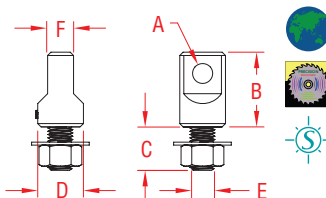
ITEM	SIZE	A	B	C	D	E	F	WLL	WT
	(nominal)					(UNC thread)		(lb)	(lb)
S0116-HB07	1/4"	0.31"	1.38"	1.00"	0.75"	3/8"- 16	0.45"	1,000	0.12
S0116-HB08	5/16"	0.38"	1.63"	1.20"	0.88"	7/16"- 14	0.48"	1,300	0.18
S0116-HB10	3/8"	0.44"	2.00"	1.50"	1.25"	1/2"- 13	0.60"	1,500	0.46
S0116-HB12	7/16"	0.50"	2.13"	1.56"	1.38"	5/8"- 11	0.65"	2,000	0.56
S0116-HB13	1/2"	0.63"	2.25"	1.59"	1.38"	3/4"- 10	0.78"	3,000	0.58
S0116-HB16	5/8"	0.75"	2.67"	1.86"	1.75"	7/8"- 9	1.01"	4,000	1.11
S0116-HB20	3/4"	0.88"	2.89"	2.00"	2.00"	1"- 8	1.19"	6,000	1.54
S0116-HB22	7/8"	1.00"	3.50"	2.34"	2.50"	1-1/8"- 7	1.39"	8,000	3.00
S0116-HB25	1"	1.13"	4.00"	2.67"	2.75"	1-1/4"- 7	1.60"	10,000	4.23

NOTE:
316 STAINLESS STEEL FOR MAXIMUM CORROSION RESISTANCE. DESIGNED FOR USE WITH STANDARD SHACKLE TYPES AND SIZES.

ANCHOR BASE w/ STUD



316 STAINLESS STEEL



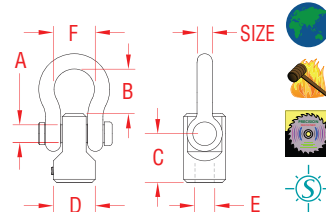
ITEM	SIZE	A	B	C	D	E	F	WLL	WT
	(nominal)					(UNC thread)		(lb)	(lb)
S0116-HC07	1/4"	0.31"	1.38"	0.64"	0.75"	3/8"- 16	0.45"	1,000	0.16
S0116-HC08	5/16"	0.38"	1.63"	0.78"	0.88"	7/16"- 14	0.48"	1,300	0.24
S0116-HC10	3/8"	0.44"	2.00"	0.86"	1.25"	1/2"- 13	0.60"	1,500	0.54
S0116-HC12	7/16"	0.50"	2.13"	1.10"	1.38"	5/8"- 11	0.65"	2,000	0.72
S0116-HC13	1/2"	0.63"	2.25"	1.32"	1.38"	3/4"- 10	0.78"	3,000	0.86
S0116-HC16	5/8"	0.75"	2.67"	1.43"	1.75"	7/8"- 9	1.01"	4,000	1.53
S0116-HC20	3/4"	0.88"	2.89"	1.80"	2.00"	1"- 8	1.19"	6,000	2.19
S0116-HC22	7/8"	1.00"	3.50"	2.05"	2.50"	1-1/8"- 7	1.39"	8,000	3.93
S0116-HC25	1"	1.13"	4.00"	2.17"	2.75"	1-1/4"- 7	1.60"	10,000	5.57

NOTE:
DESIGNED FOR USE WITH STANDARD SHACKLE TYPES AND SIZES. INCLUDES HOIST ANCHOR BASE, THREADED ROD, WASHER & NUT. THREADS ARE UNC.

ANCHOR BASE w/ SHACKLE



316 STAINLESS STEEL



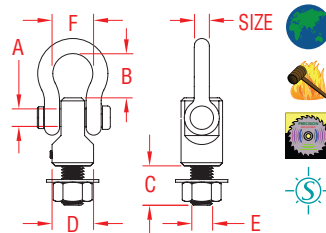
ITEM	SIZE	A	B	C	D	E	F	WLL	WT
	(nominal)					(UNC thread)		(lb)	(lb)
S0116-HD07	1/4"	0.31"	0.91"	1.00"	0.75"	3/8"- 16	0.79"	1,000	0.22
S0116-HD08	5/16"	0.38"	0.99"	1.20"	0.88"	7/16"- 14	0.81"	1,300	0.35
S0116-HD10	3/8"	0.44"	1.13"	1.50"	1.25"	1/2"- 13	1.05"	1,500	0.78
S0116-HD12	7/16"	0.50"	1.14"	1.56"	1.38"	5/8"- 11	1.14"	2,000	1.05
S0116-HD13	1/2"	0.63"	1.47"	1.59"	1.38"	3/4"- 10	1.33"	3,000	1.30
S0116-HD16	5/8"	0.75"	2.00"	1.86"	1.75"	7/8"- 9	1.67"	4,000	2.64
S0116-HD20	3/4"	0.88"	2.48"	2.00"	2.00"	1"- 8	2.02"	6,000	3.90
S0116-HD22	7/8"	1.00"	2.78"	2.34"	2.50"	1-1/8"- 7	2.24"	8,000	7.00
S0116-HD25	1"	1.13"	2.99"	2.67"	2.75"	1-1/4"- 7	2.47"	10,000	9.50

NOTE:
316 STAINLESS STEEL FOR MAXIMUM CORROSION RESISTANCE. INCLUDES HOIST ANCHOR BASE AND FIXED SHACKLE. THREADS ARE UNC.

COMPLETE HOIST ASSEMBLY



316 STAINLESS STEEL



ITEM	SIZE	A	B	C	D	E	F	WLL	WT
	(nominal)					(UNC thread)		(lb)	(lb)
S0116-HF07	1/4"	0.31"	0.91"	0.64"	0.75"	3/8"- 16	0.79"	1,000	0.26
S0116-HF08	5/16"	0.38"	0.99"	0.78"	0.88"	7/16"- 14	0.81"	1,300	0.41
S0116-HF10	3/8"	0.44"	1.13"	0.86"	1.25"	1/2"- 13	1.05"	1,500	0.86
S0116-HF12	7/16"	0.50"	1.14"	1.10"	1.38"	5/8"- 11	1.14"	2,000	1.21
S0116-HF13	1/2"	0.63"	1.47"	1.32"	1.38"	3/4"- 10	1.33"	3,000	1.58
S0116-HF16	5/8"	0.75"	2.00"	1.43"	1.75"	7/8"- 9	1.67"	4,000	3.06
S0116-HF20	3/4"	0.88"	2.48"	1.80"	2.00"	1"- 8	2.02"	6,000	4.55
S0116-HF22	7/8"	1.00"	2.78"	2.05"	2.50"	1-1/8"- 7	2.24"	8,000	7.93
S0116-HF25	1"	1.13"	2.99"	2.17"	2.75"	1-1/4"- 7	2.47"	10,000	10.84

NOTE:
COMPLETE HOIST ASSEMBLY. INCLUDES HOIST ANCHOR BASE, FIXED SHACKLE, THREADED ROD, WASHER AND NUT. THREADS ARE UNC.

LIMITED LIFETIME WARRANTY

SUNCOR STAINLESS®

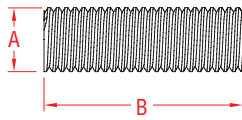
TEL 508-732-9191 • FAX 508-732-9798 • ORDERS ONLY 800-394-2222
www.suncorstainless.com

THREADED PRODUCTS

THREADED PRODUCTS

THREADED ROD, UNC

316 STAINLESS STEEL

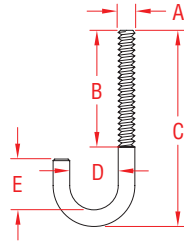


ITEM	A	B	THREAD	WLL	WT
	(size)			(lb)	(lb)
S0300-0007	1/4"	6 FEET	1/4"-20	475	0.76
S0300-0008	5/16"	6 FEET	5/16"-18	780	1.22
S0300-0010	3/8"	6 FEET	3/8"-16	1,160	2.30
S0300-0013	1/2"	6 FEET	1/2"-13	2,120	3.25
S0300-0016	5/8"	6 FEET	5/8"-11	3,390	5.15
S0300-0020	3/4"	6 FEET	3/4"-10	5,000	7.55
S0300-0022	7/8"	6 FEET	7/8"-9	6,930	10.26
S0300-0025	1"	6 FEET	1"-8	9,090	13.64

NOTE:
RODS WITH METRIC THREAD CAN BE SUPPLIED ON SPECIAL ORDER.

J-BOLT

304 STAINLESS STEEL

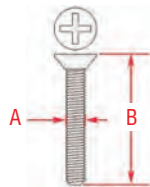


ITEM	A	B	C	D	E	WT
						(lb)
S0358-0550	3/16"	1.25"	1.88"	0.31"	0.56"	0.03
S0358-0655	7/32"	1.25"	2.13"	0.34"	0.66"	0.04
S0358-0760	1/4"	1.25"	2.40"	0.38"	0.75"	0.05
S0358-0875	5/16"	1.71"	3.00"	0.50"	0.94"	0.08
S0358-10100	3/8"	2.25"	3.75"	0.50"	1.13"	0.12
S0358-10125	3/8"	2.25"	5.00"	0.50"	1.13"	0.16
S0358-10180	3/8"	2.25"	7.00"	0.50"	1.13"	0.22
S0358-13150	1/2"	3.00"	6.00"	0.63"	1.50"	0.26

NOTE:
ALL THREADS ARE STANDARD "UNC".
FOR S0303-SERIES "UNC" RIGHT HAND NUTS, SEE PAGE 100.

MACHINE SCREW - FLATHEAD

PHILLIPS
316 STAINLESS STEEL

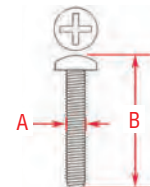
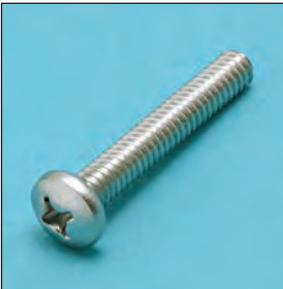


ITEM	SIZE	A	B	QTY	WT
					(lb)
SMALL PACKS - POLY BAG					
S0910-0538-10	#8-32	0.16"	1.50"	10	0.07
S0910-0638-8	#10-24	0.18"	1.50"	8	0.08
S0910-0725-4	1/4"-20	0.25"	1.00"	4	0.05
S0910-0750-4	1/4"-20	0.25"	2.00"	4	0.09
S0910-0845-3	5/16"-18	0.31"	1.50"	3	0.09
BULK 1 LB. PACKS - PLASTIC BOX					
S0910-0538-1LB	#8-32	0.16"	1.50"	1 lb (135 pcs)	1.00
S0910-0638-1LB	#10-24	0.18"	1.50"	1 lb (103 pcs)	1.00
S0910-0725-1LB	1/4"-20	0.25"	1.00"	1 lb (78 pcs)	1.00
S0910-0750-1LB	1/4"-20	0.25"	2.00"	1 lb (44 pcs)	1.00
S0910-0845-1LB	5/16"-18	0.31"	1.50"	1 lb (34 pcs)	1.00

NOTE: 316 STAINLESS. MATCHING WASHERS AND NUTS ARE AVAILABLE.

MACHINE SCREW - PANHEAD

PHILLIPS
316 STAINLESS STEEL

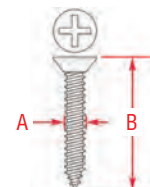


ITEM	SIZE	A	B	QTY	WT
					(lb)
SMALL PACKS - POLY BAG					
S0911-0750-4	1/4"-20	0.25"	2.00"	4	0.11
S0911-0850-3	5/16"-18	0.31"	2.00"	3	0.14
BULK 1 LB. PACKS - PLASTIC BOX					
S0911-0750-1LB	1/4"-20	0.25"	2.00"	1 lb (38 pcs)	1.00
S0911-0850-1LB	5/16"-18	0.31"	2.00"	1 lb (22 pcs)	1.00

NOTE:
316 STAINLESS FOR MAXIMUM CORROSION RESISTANCE.
MATCHING WASHERS, NUTS AND STAINLESS PHILLIPS HEAD
DRIVER BITS ARE AVAILABLE.

WOOD SCREW - FLATHEAD

PHILLIPS
316 STAINLESS STEEL



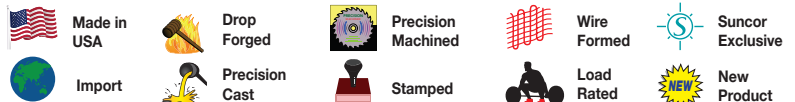
ITEM	SIZE	A	B	QTY	WT
					(lb)
SMALL PACKS - POLY BAG					
S0914-0538-10	#8	0.16"	1.50"	10	0.06
S0914-0638-8	#10	0.19"	1.50"	8	0.07
S0914-0750-4	#14 (1/4")	0.25"	2.00"	4	0.08
S0914-0850-3	#20 (5/16")	0.31"	2.00"	3	0.10
BULK 1 LB. PACKS - PLASTIC BOX					
S0914-0538-1LB	#8	0.16"	1.50"	1 lb (160 pcs)	1.00
S0914-0638-1LB	#10	0.19"	1.50"	1 lb (120 pcs)	1.00
S0914-0750-1LB	#14 (1/4")	0.25"	2.00"	1 lb (53 pcs)	1.00
S0914-0850-1LB	#20 (5/16")	0.31"	2.00"	1 lb (30 pcs)	1.00

NOTE: 316 STAINLESS FOR MAXIMUM CORROSION RESISTANCE.
STAINLESS PHILLIPS HEAD DRIVER BITS ARE AVAILABLE.



ORDERS ONLY: 800-394-2222
(USA+CANADA)

Key:

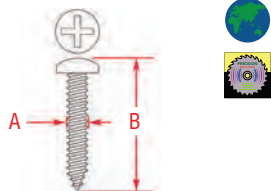


All logos, icons, images, measurements and descriptions are the sole property of Suncor Stainless, Inc.
© 2020 Suncor Stainless, Inc.

WOOD SCREW - PANHEAD



**PHILLIPS
316 STAINLESS STEEL**

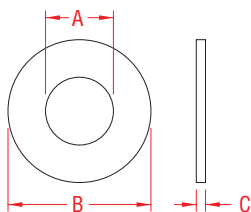


ITEM	SIZE	A	B	QTY	WT
(lb)					
SMALL PACKS - POLY BAG					
S0913-0738-4	#14 (1/4")	0.25"	1.50"	4	0.07
S0913-0838-3	#20 (5/16")	0.31"	1.50"	3	0.10
BULK 1 LB. PACKS - PLASTIC BOX					
S0913-0738-1LB	#14 (1/4")	0.25"	1.50"	1 lb (59 pcs)	1.00
S0913-0838-1LB	#20 (5/16")	0.31"	1.50"	1 lb (32 pcs)	1.00
NOTE: 316 STAINLESS FOR MAXIMUM CORROSION RESISTANCE. STAINLESS PHILLIPS HEAD DRIVER BITS ARE AVAILABLE.					

FLAT WASHER

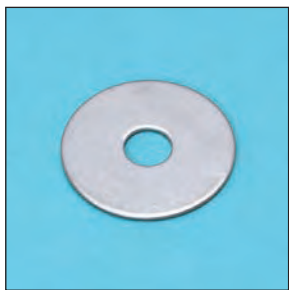


316 STAINLESS STEEL

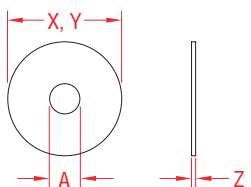


ITEM	SIZE	A	B	C	QTY	WT
(lb)						
SMALL PACKS - POLY BAG						
P0113-WA04-10	#8 (1/8")	0.13"	0.32"	0.03"	10	0.008
P0113-WA05-10	#10 (3/16")	0.21"	0.43"	0.03"	10	0.010
P0113-WA07-4	#14 (1/4")	0.29"	0.62"	0.05"	4	0.014
P0113-WA08-3	#20 (5/16")	0.36"	0.75"	0.05"	3	0.014
PACKS OF 100 - PLASTIC BOX						
P0113-WA04-100	#8 (1/8")	0.13"	0.32"	0.03"	100	0.07
P0113-WA05-100	#10 (3/16")	0.21"	0.43"	0.03"	100	0.11
P0113-WA07-100	#14 (1/4")	0.29"	0.62"	0.05"	100	0.35
P0113-WA08-100	#20 (5/16")	0.36"	0.75"	0.05"	100	0.44
NOTE: 316 STAINLESS STEEL FOR MAXIMUM CORROSION RESISTANCE. COMPATIBLE FASTENERS AND NUTS ARE AVAILABLE.						

FENDER WASHER



316 STAINLESS STEEL

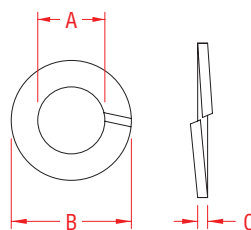


ITEM	A	X	Y	Z	WT
		(height)	(length)	(width)	(lb)
P0113-FW07	1/4"	1.25"	1.25"	0.04"	0.01
P0113-FW08	5/16"	1.50"	1.50"	0.05"	0.02
P0113-FW10	3/8"	1.50"	1.50"	0.06"	0.03
P0113-FW13	1/2"	2.00"	2.00"	0.06"	0.05
NOTE: ALL DIMENSIONS ARE NOMINAL (+/- 3%) AND ARE SUBJECT TO CHANGE WITHOUT NOTICE.					

LOCK WASHER - SPLIT



316 STAINLESS STEEL

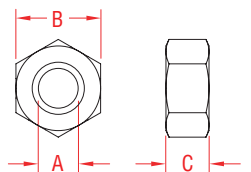


ITEM	SIZE	A	B	C	QTY	WT
(lb)						
SMALL PACKS - POLY BAG						
P0113-SW04-10	#8 (1/8")	0.13"	0.23"	0.03"	10	0.004
P0113-SW05-10	#10 (3/16")	0.20"	0.33"	0.05"	10	0.010
P0113-SW07-4	#14 (1/4")	0.26"	0.48"	0.07"	4	0.012
P0113-SW08-3	#20 (5/16")	0.33"	0.58"	0.09"	3	0.014
PACKS OF 100 - PLASTIC BOX						
P0113-SW04-100	#8 (1/8")	0.13"	0.23"	0.03"	100	0.05
P0113-SW05-100	#10 (3/16")	0.20"	0.33"	0.05"	100	0.10
P0113-SW07-100	#14 (1/4")	0.26"	0.48"	0.07"	100	0.24
P0113-SW08-100	#20 (5/16")	0.33"	0.58"	0.09"	100	0.43
NOTE: 316 STAINLESS STEEL FOR MAXIMUM CORROSION RESISTANCE. COMPATIBLE FASTENERS AND NUTS ARE AVAILABLE.						

HEX NUT - RIGHT HAND



**316 STAINLESS STEEL
UNC**



ITEM	A	B	C	THREAD	QTY	WT
	(size)				(lb)	
SMALL PACKS - POLY BAG						
S0303-0004-10	#8 (1/8")	0.34"	0.12"	#8-32	10	0.03
S0303-0005-10	#10 (3/16")	0.37"	0.16"	#10-24	10	0.03
S0303-0007-4	#14 (1/4")	0.43"	0.22"	1/4"-20	4	0.03
S0303-0008-3	#20 (5/16")	0.49"	0.26"	5/16"-18	3	0.03
PACKS OF 100 - PLASTIC BOX						
S0303-0004-100	#8 (1/8")	0.34"	0.12"	#8-32	100	0.30
S0303-0005-100	#10 (3/16")	0.37"	0.16"	#10-24	100	0.35
S0303-0007-100	#14 (1/4")	0.43"	0.22"	1/4"-20	100	0.80
S0303-0008-100	#20 (5/16")	0.49"	0.26"	5/16"-18	100	1.07
NOTE: 316 STAINLESS STEEL. ALL THREADS ARE STANDARD RIGHT HAND "UNC".						

**LIMITED LIFETIME
WARRANTY**

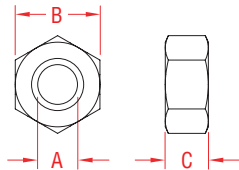
SUNCOR STAINLESS®

TEL 508-732-9191 • FAX 508-732-9798 • ORDERS ONLY 800-394-2222
www.suncorstainless.com

THREADED PRODUCTS

HEX NUTS

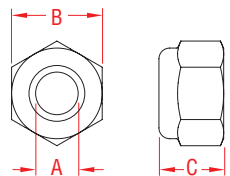
316 STAINLESS STEEL



ITEM	A	B	C	THREAD	WT
	(size)	(wrench)			(lb)
LEFT HAND - "UNC"					
S0302-0005	3/16"	0.31"	5/16"	0.16"	10 - 24 .25/100
S0302-0007	1/4"	0.43"	7/16"	0.22"	1/4" - 20 .42/100
S0302-0008	5/16"	0.47"	1/2"	0.26"	5/16" - 18 .82/100
S0302-0010	3/8"	0.54"	9/16"	0.33"	3/8" - 16 1.5/100
S0302-0013	1/2"	0.75"	3/4"	0.44"	1/2" - 13 3.5/100
S0302-0016	5/8"	0.94"	15/16"	0.55"	5/8" - 11 7.0/100
S0302-0020	3/4"	1.13"	1-1/8"	0.66"	3/4" - 10 13.0/100
S0302-0025	1"	1.51"	1-1/2"	0.84"	1" - 8 31.0/100
S0302-0028	1-1/8"	1.65"	1-5/8"	0.99"	1-1/8" - 7 40.0/100
S0302-0032	1-1/4"	1.77"	1-3/4"	1.06"	1-1/4" - 7 58.0/100
RIGHT HAND - "UNC"					
S0303-0005	3/16"	0.31"	5/16"	0.16"	10 - 24 .25/100
S0303-0007	1/4"	0.43"	7/16"	0.22"	1/4" - 20 .42/100
S0303-0008	5/16"	0.47"	1/2"	0.26"	5/16" - 18 .82/100
S0303-0010	3/8"	0.54"	9/16"	0.33"	3/8" - 16 1.5/100
S0303-0013	1/2"	0.75"	3/4"	0.44"	1/2" - 13 3.5/100
S0303-0016	5/8"	0.94"	15/16"	0.55"	5/8" - 11 7.0/100
S0303-0020	3/4"	1.13"	1-1/8"	0.66"	3/4" - 10 13.0/100
S0303-0025	1"	1.51"	1-1/2"	0.84"	1" - 8 31.0/100
S0303-0028	1-1/8"	1.65"	1-5/8"	0.99"	1-1/8" - 7 40.0/100
S0303-0032	1-1/4"	1.77"	1-3/4"	1.06"	1-1/4" - 7 58.0/100
RIGHT HAND - METRIC					
S0303-MM05	5 mm	0.31"	5/16"	0.15"	M5 x 0.8 .25/100
S0303-MM06	6 mm	0.38"	3/8"	0.19"	M6 x 1.0 .45/100
S0303-MM10	10 mm	0.65"	5/8"	0.30"	M10 x 1.5 2.0/100
S0303-MM12	12 mm	0.74"	3/4"	0.38"	M12 x 1.75 3.5/100
S0303-MM16	16 mm	0.93"	15/16"	0.50"	M16 x 2.0 8.0/100
S0303-MM20	20 mm	1.17"	1-3/16"	0.61"	M20 x 2.5 12.0/100
LEFT HAND - STANDARD "UNF"					
S0304-0005	3/16"	0.31"	5/16"	0.12"	10 - 32 .25/100
S0304-0007	1/4"	0.43"	7/16"	0.22"	1/4" - 28 .42/100
S0304-0008	5/16"	0.47"	1/2"	0.24"	5/16" - 24 .82/100
S0304-0010	3/8"	0.54"	9/16"	0.33"	3/8" - 24 1.5/100
S0304-0013	1/2"	0.75"	3/4"	0.44"	1/2" - 20 3.5/100
S0304-0016	5/8"	0.94"	15/16"	0.55"	5/8" - 18 7.0/100
S0304-0020	3/4"	1.09"	1-1/8"	0.63"	3/4" - 16 10.0/100
RIGHT HAND - STANDARD "UNF"					
S0305-0005	3/16"	0.31"	5/16"	0.12"	10 - 32 .25/100
S0305-0007	1/4"	0.43"	7/16"	0.22"	1/4" - 28 .42/100
S0305-0008	5/16"	0.47"	1/2"	0.24"	5/16" - 24 .82/100
S0305-0010	3/8"	0.54"	9/16"	0.33"	3/8" - 24 1.5/100
S0305-0013	1/2"	0.75"	3/4"	0.44"	1/2" - 20 3.5/100
S0305-0016	5/8"	0.94"	15/16"	0.55"	5/8" - 18 7.0/100
S0305-0020	3/4"	1.09"	1-1/8"	0.63"	3/4" - 16 10.0/100

NYLON INSERT LOCK NUT

316 STAINLESS STEEL

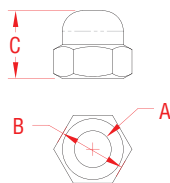


ITEM	A	B	C	THREAD	WT
	(size)	(wrench)		(height)	(lb)
S0303-NI07	1/4"	0.43"	7/16"	0.31"	1/4" - 20 .80/100
S0303-NI08	5/16"	0.50"	1/2"	0.34"	5/16" - 18 1.0/100

NOTE:
ALL THREADS ARE STANDARD RIGHT HAND "UNC".

ACORN NUT

316 STAINLESS STEEL
UNC



ITEM	A	B	C	THREAD	WT
	(size)	(wrench)			(lb)
S0306-0005	3/16"	0.38"	3/8"	0.42"	10 - 24 .48/100
S0306-0007	1/4"	0.44"	7/16"	0.47"	1/4" - 20 .93/100
S0306-0008	5/16"	0.56"	9/16"	0.53"	5/16" - 18 1.7/100
S0306-0010	3/8"	0.63"	5/8"	0.63"	3/8" - 16 4.0/100
S0306-0012	7/16"	0.63"	5/8"	0.72"	7/16" - 13 7.5/100
S0306-0013	1/2"	0.75"	3/4"	0.81"	1/2" - 13 8.0/100
S0306-0016	5/8"	1.00"	1"	0.98"	5/8" - 11 15.0/100
S0306-0020	3/4"	1.06"	1-1/16"	1.19"	3/4" - 10 35.0/100



ORDERS ONLY: 800-394-2222
(USA+CANADA)

Key:



Made in USA

Import



Drop Forged

Precision Cast



Precision Machined

Stamped



Wire Formed



Load Rated



Suncor Exclusive

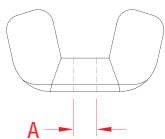


New Product

WING NUT



304 STAINLESS STEEL



ITEM	A	THREAD	WT
	(size)		(lb)
S0301-0005	3/16"	10 - 24	0.01
S0301-0007	1/4"	1/4" - 20	0.02
S0301-0008	5/16"	5/16" - 18	0.04
S0301-0010	3/8"	3/8" - 16	0.08
S0301-0013	1/2"	1/2" - 13	0.13
S0301-0016	5/8"	5/8" - 11	0.20

NOTE:
HEAVY DUTY, PRECISION CAST WING NUT.

ALL THREADS ARE RIGHT HAND - STANDARD "UNC".

SCREWDRIVER BITS - PHILLIPS



ITEM	SIZE	LENGTH	QTY	WT
				(lb)
410 STAINLESS STEEL				
E0101-PH02-C-2	#2	1" (25mm)	2	0.04
E0101-PHL2-C-2	#2	2" (50mm)	2	0.06
E0101-PH03-C-2	#3	1" (25mm)	2	0.04
E0101-PHL3-C-2	#3	2" (50mm)	2	0.07

NOTE:
USING STAINLESS DRIVER BITS PREVENTS CONTAMINATION OF STAINLESS SCREW HEADS. USING TYPICAL STEEL BITS CAN CAUSE STAINLESS FASTENERS TO STAIN, IF STRIPPING OCCURS DURING INSTALLATION.

PART NUMBERS SHOWN ARE FOR 2 PACKS. HOWEVER, BULK ORDERS ARE AVAILABLE UPON REQUEST.

FASTENER LUBRICANT



ITEM	SIZE	WT
		(lb)
E0102-0000	2.5 oz	0.19

NOTE:
CONTAINS BEESWAX. APPLY THIS SPECIAL FASTENER LUBRICANT TO ANY THREADED SURFACE TO EASE THREADING. VERY EFFECTIVE ON WOOD SCREWS TO ELIMINATE ANY STRIPPING OF SCREW HEADS AND TO SPEED INSTALLATION.

LIMITED LIFETIME WARRANTY

 **SUNCOR STAINLESS®**

TEL 508-732-9191 • FAX 508-732-9798 • ORDERS ONLY 800-394-2222
www.suncorstainless.com