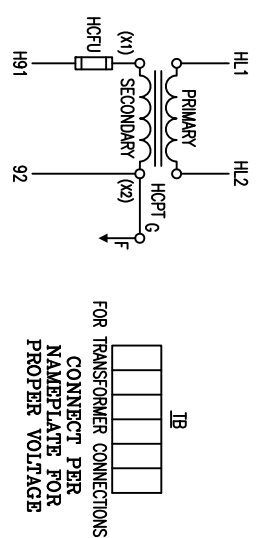
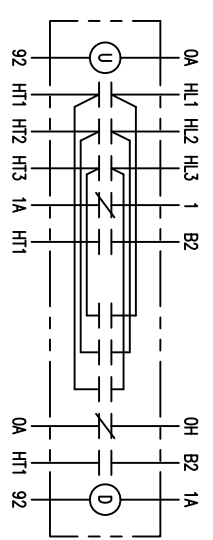
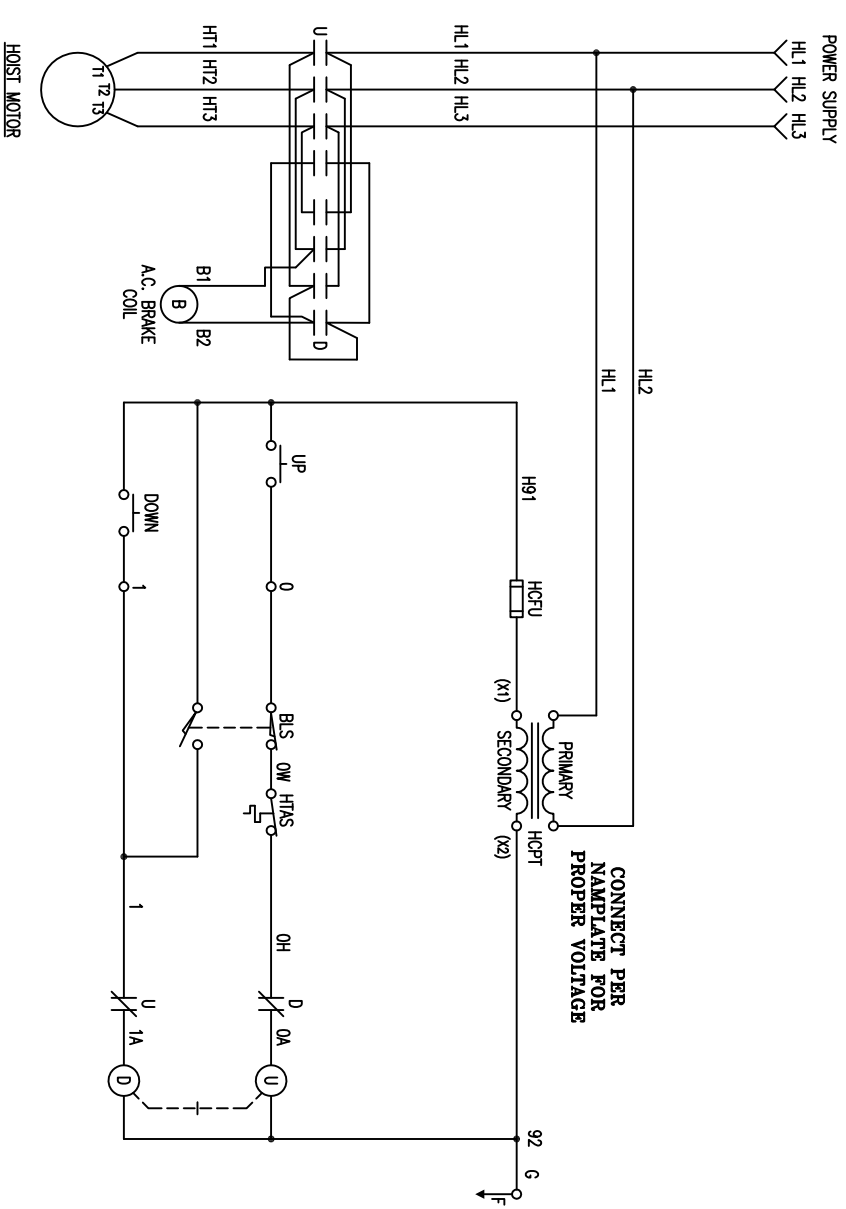


Go To Index

WIRE #	DEVICE CONNECTED
HL1	U-D, HCPT
HL2	U-D, HCPT
HL3	U-D
HT1	U-D
HT2	U-D
HT3	U-D
0	D, U
0A	D, U
0W	D
0H	D
1	U
1A	U, D
H91	HCPT, G, U, D
92	HCPT, G, U, D
B1	U, D
B2	U, D



ELEMENTARY DIAGRAM



# Y80/800 SERIES 1-SPEED HOIST

**▲WARNING:**  
UNLESS HOOK RAISES WHEN "UP" PUSHBUTTON IS PRESSED, SEVERE HOIST DAMAGE AND A DROPPED LOAD MAY RESULT.  
CORRECT IMPROPER HOOK DIRECTION BY INTER-CHANGING MOTOR INPUT POWER LEADS L1 AND L2.  
DO NOT CHANGE PUSHBUTTON WIRING.

**▲WARNING:**  
THIS EQUIPMENT MUST BE EFFECTIVELY GROUNDED ACCORDING TO APPLICABLE CODES.

**▲AVERTISSEMENT:**  
CET EQUIPEMENT DOIT ETRE MIS A LA TERRE EN ACCORDANCE AVEC LES NORMES EN VIGUEUR.

SYMBOL DESIGNATIONS

- HCPT - CONTROL CIRCUIT TRANSFORMER
- HCPT - CONTROL CIRCUIT FUSING
- U - HOIST UP CONTACTOR
- D - HOIST DOWN CONTACTOR
- BLS - HOIST BLOCK OPERATED LIMIT SWITCH
- HTAS - HOIST MOTOR TEMPERATURE ACTIVATED SWITCH
- TB - TERMINAL BOARD
- G<sub>F</sub> - FRAME GROUND

NO.	CHANGE	DATE	TITLE	A.C.
			1-SPEED HOIST	
			WIRING DIAGRAM	
			WITH TMS AND BLS	

SC	DA 01/04/07	 <b>VALE LIFT-TECH</b> <small>Manufacturing Division</small> <small>18445</small> <small>COMPONENT</small>
DR	SUDA	
SHEET	47	
DF	99	
CK		SHEETS
AP		451222

