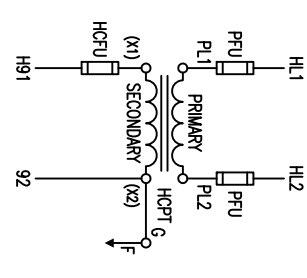


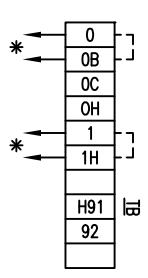
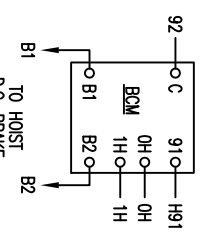
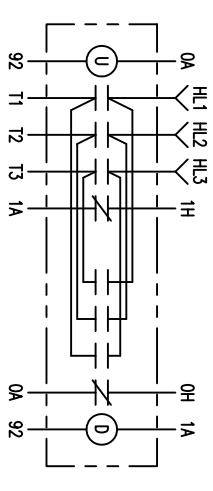
Go To Index

WIRE #	DEVICE CONNECTED
HL1	U-D, PFU
HL2	U-D, PFU
HL3	U-D, PFU
PL1	PFU, HCPT
PL2	PFU, HCPT
T1	U-D
T2	U-D
T3	U-D
0	TB
0A	D, U
0B	TB
0C	TB
0H	TB
1A	D, BCM
1H	U, D
1A	U, BCM
H91	HCFT, BCM
92	HCPT, G, U, D, BCM
B1	BCM
B2	BCM

CONNECT PER NAMEPLATE FOR PROPER VOLTAGE

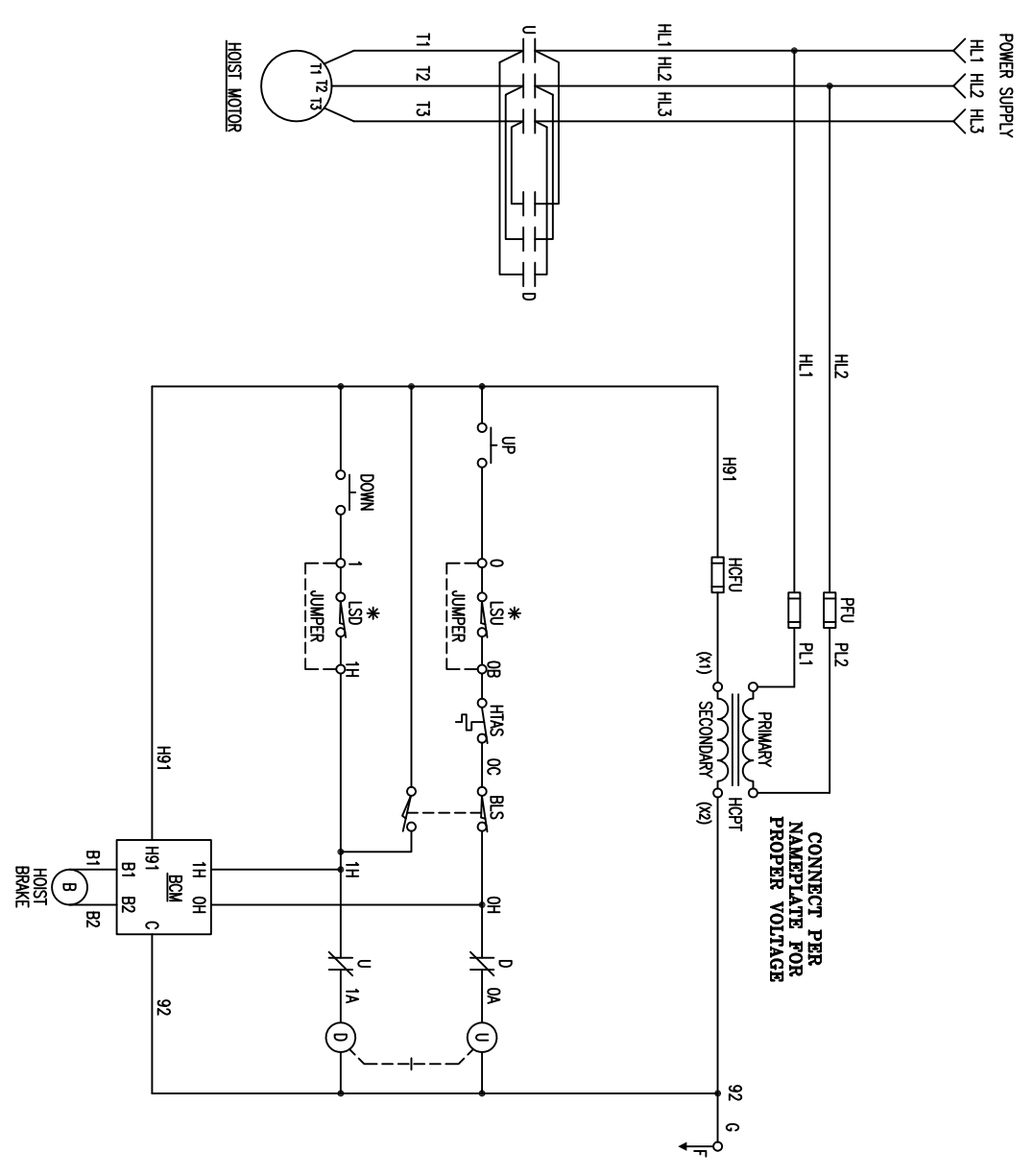


POWER SUPPLY



* NOTE:
TO THE UPPER AND LOWER GEAR LIMIT SWITCH, IF THE GLS IS NOT USED, JUMPER 0 TO 0B & 1 TO 1H, AS SHOWN.

ELEMENTARY DIAGRAM



700 SERIES SIZE 2 & 3
1-SPEED HOIST

▲WARNING:

UNLESS HOOK RAISES WHEN "UP" PUSHBUTTON IS PRESSED, SEVERE HOIST DAMAGE AND A DROPPED LOAD MAY RESULT.
CORRECT IMPROPER HOOK DIRECTION BY INTER-CHANGING MOTOR INPUT POWER LEADS L1 AND L2.
DO NOT CHANGE PUSHBUTTON WIRING.

▲WARNING:

THIS EQUIPMENT MUST BE EFFECTIVELY GROUNDED ACCORDING TO APPLICABLE CODES.

▲AVERTISSEMENT:

CEI EQUIPEMENT DOIT ETRE MIS A LA TERRE EN ACCORDANCE AVEC LES NORMES EN VIGUEUR.

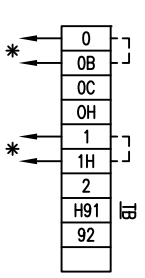
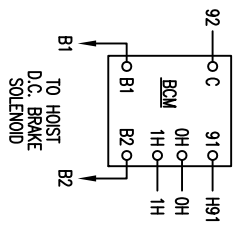
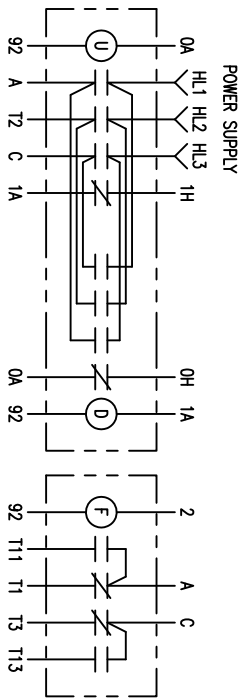
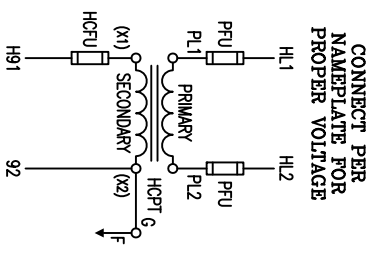
SYMBOL DESIGNATIONS

- PFU - TRANSFORMER PRIMARY FUSING
- HCPT - CONTROL CIRCUIT TRANSFORMER
- HCFU - CONTROL CIRCUIT FUSING
- U - HOIST UP CONTACTOR
- D - HOIST DOWN CONTACTOR
- LSU - HOIST UPPER GEAR TYPE LIMIT SWITCH
- LSD - HOIST LOWER GEAR TYPE LIMIT SWITCH
- BLS - HOIST BLOCK OPERATED LIMIT SWITCH
- BCM - D.C. BRAKE CONTROL MODULE
- HTAS - HOIST MOTOR TEMPERATURE ACTIVATED SWITCH
- TB - TERMINAL BOARD
- G - FRAME GROUND
- F -

NO.	CHANGE	DATE	ITL	WIRING DIAGRAM	A.C.
				700 SERIES HOIST, 1-SPEED WITH TAS, BLS, AND OPTIONAL GLS	
SC					
		DA 10/11/96			
		DR. RITTER			
		CK			
SHEET 49 OF 99 SHEETS					
451222					

[Go To Index](#)

WIRE #	DEVICE CONNECTED
HL1	U-D, PFU
HL2	U-D, PFU
HL3	U-D, PFU
PL1	PFU, HCPT
PL2	PFU, HCPT
A	U-D, F
C	U-D, F
T1	F
T2	U-D
T3	F
T11	F
T12	F
T13	F
T13	F
0	D, U
0A	D, U
0B	
0C	
0H	D, BCM
1	D, BCM
1A	U, D
1H	U, BCM
2	F
H91	HCPU, BCM
92	HCPT, G, U, D, F, BCM
B1	BCM
B2	BCM



* NOTE:
TO THE UPPER AND LOWER GEAR LIMIT SWITCH, IF THE G.S. IS NOT USED, JUMPER 0 TO 0B & 1 TO 1H, AS SHOWN.

▲ WARNING:
UNLESS HOOK RAISES WHEN "UP" PUSHBUTTON IS PRESSED, SEVERE HOIST DAMAGE AND A DROPPED LOAD MAY RESULT.
CORRECT PROPER HOOK DIRECTION BY INTER-CHANGING MOTOR INPUT POWER LEADS L1 AND L2.
DO NOT CHANGE PUSHBUTTON WIRING.

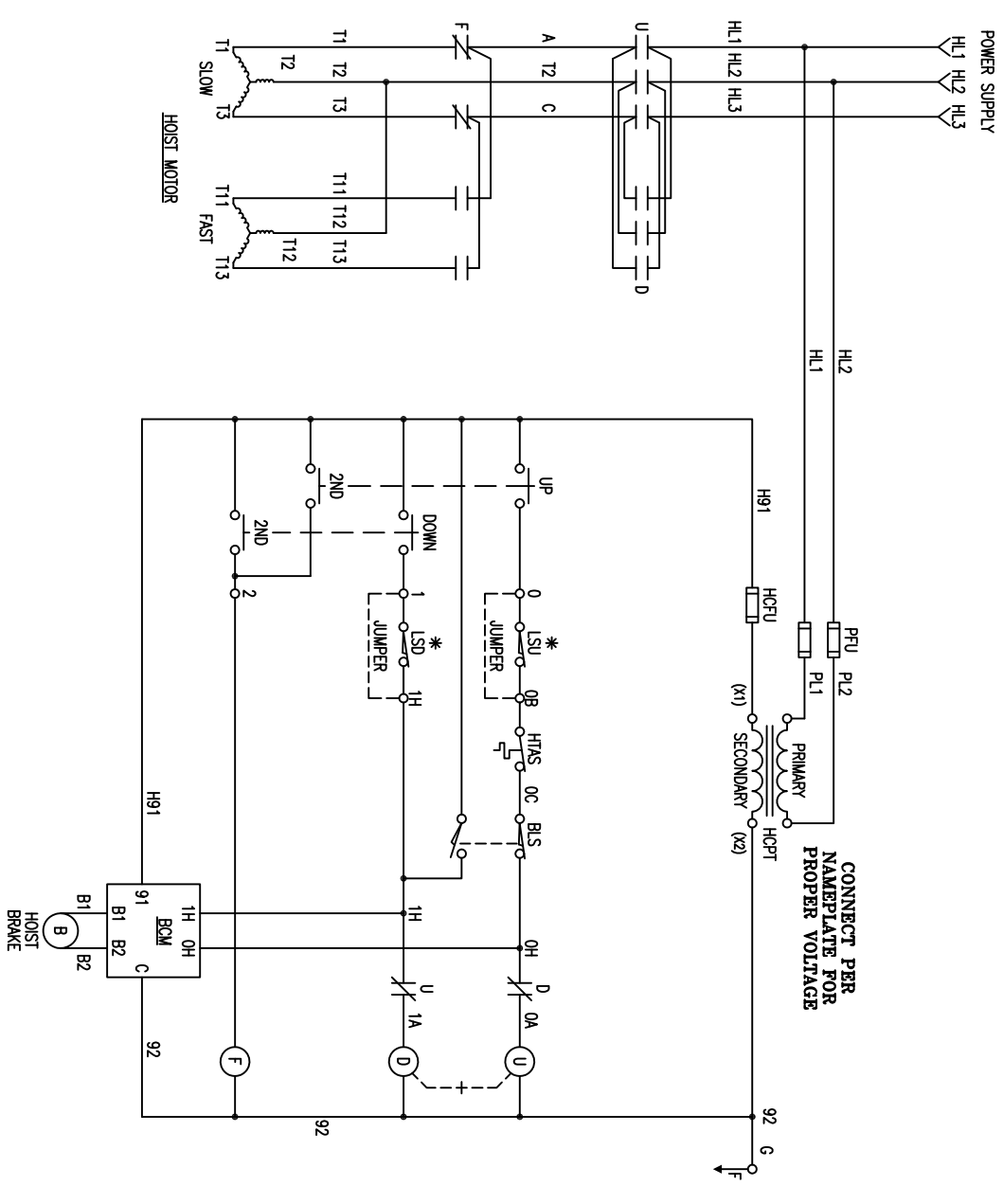
▲ WARNING:
THIS EQUIPMENT MUST BE EFFECTIVELY GROUNDED ACCORDING TO APPLICABLE CODES.

▲ AVERTISSEMENT:
CET EQUIPEMENT DOIT ETRE MIS A LA TERRE EN ACCORDANCE AVEC LES NORMES EN VIGUEUR.

SYMBOL DESIGNATIONS

- PFU - TRANSFORMER PRIMARY FUSING
- HCPT - CONTROL CIRCUIT TRANSFORMER
- HCPU - CONTROL CIRCUIT FUSING
- U - HOIST UP CONTACTOR
- D - HOIST DOWN CONTACTOR
- F - HOIST FAST SPEED CONTACTOR
- LSU - HOIST UPPER GEAR TYPE LIMIT SWITCH
- LSD - HOIST LOWER GEAR TYPE LIMIT SWITCH
- B1S - HOIST BLOCK OPERATED LIMIT SWITCH
- BCM - D.C. BRAKE CONTROL MODULE
- HTAS - HOIST MOTOR TEMPERATURE ACTUATED SWITCH
- TB - TERMINAL BOARD
- G_o - FRAME GROUND

ELEMENTARY DIAGRAM



700 SERIES SIZE 2 & 3
2-SPEED HOIST

NO.	CHANGE	DATE	ITL	WIRING DIAGRAM	A.C.
700 SERIES HOIST 2-SPEED WITH T.A.S. BLS, AND OPTIONAL G.S.					
SC	DA 10/11/96	 YALE LIFT-TECH <small>Yale is a registered trademark of Ingersoll Rand Corporation</small>			
DR	RITTER				
CK					
AP					
SHEET 50 OF 99 SHEETS					451222