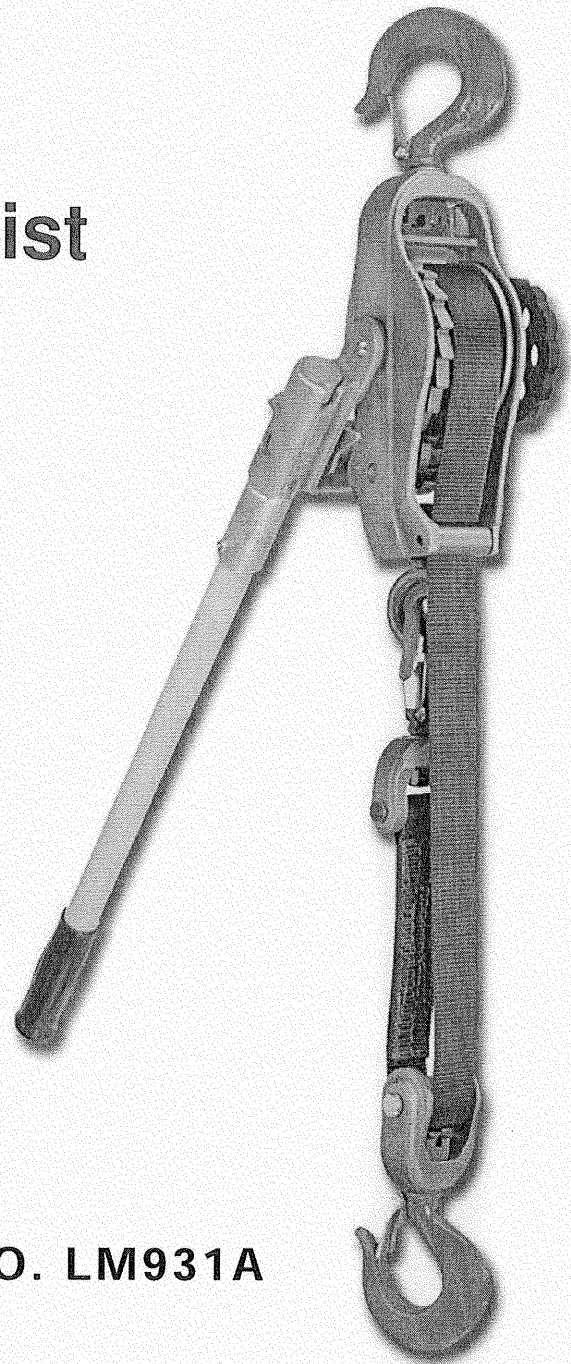




Operation and Maintenance Manual

Lineman's Hoist

Models
250A
300A
250DA
300DA



PUBLICATION PART NO. LM931A

IMPORTANT — **CAUTION**

This manual contains important information for the correct installation, operation and maintenance of the equipment described herein. All persons involved in such installation, operation, and maintenance should be thoroughly familiar with the contents. To safeguard against the possibility of personal injury or property damage, follow the recommendations and instructions of this manual and keep it for further reference.

WARNING

The equipment shown in this manual is intended for industrial use only and should not be used to lift, support, or otherwise transport people, or to suspend unattended loads over people.

⚠ WARNING — To Avoid Injury

Do not operate damaged or malfunctioning hoist.
Do not lift more than rated load.
Do not lift people or loads over people.
Do not operate with twisted, fouled or damaged web strap.
Do not operate hoist unless hoist body, web strap and load block or hook are in a straight line.
Do not operate hoist until load is properly seated in hook.

Do not operate hoist with a handle extension.
Do not attempt to free wheel web strap with a load on hoist.
Do not use hoist web strap for a sling or drag strap under load.
Do not operate except with hand power.
Do not remove or obscure the warning decal.
Do not allow web strap and hoist to be dirty - clean and dry thoroughly. Relubricate hoist.

⚠ Danger — To Avoid Electrical Shock Resulting in Serious Injury or Death

The web strap on this hoist is NOT a rated insulating member. When clean and dry, the strap may have dielectric properties typical of nylon or polyester fibers. The non-metallic handle and webbing provide an extra measure of safety for use around energized power lines.

Use an appropriate insulating member in series with hoist and web strap to achieve proper working distances per OSHA Regulation Subpart V, 1926.950 or your company work practices. When handle swings closer to energized conductors than OSHA safe working distances or company practices permit, use appropriate clothing and rubber gloves for rated voltages.

OSHA REGULATION SUBPART V, 1926.950 TABLE V-1 Alternating Current - Minimum Distances

Voltage Range (Phase to Phase) Kilovolt	Minimum Working Distance	Voltage Range (Phase to Phase) Kilovolt	Minimum Working Distance
2.1 to 15	2 ft. 0 in.	161 to 169	3 ft. 8 in.
15.1 to 35	2 ft. 4 in.	230 to 242	5 ft. 0 in.
35.1 to 46	2 ft. 6 in.	345 to 362	7 ft. 0 in.
46.1 to 72.5	3 ft. 0 in.	500 to 552	11 ft. 0 in.
72.6 to 121	3 ft. 4 in.	700 to 765	15 ft. 0 in.
138 to 145	3 ft. 6 in.		

INTRODUCTION

This operation and maintenance manual covers 250A and 300A Series Lineman's Hoists manufactured by Little Mule Products. This manual has been prepared to assist the user or repair person in operating, maintaining and repairing the web strap hoists.

DESCRIPTION

All web strap hoist models are designed for lifting and pulling loads up to the rated capacities listed on the hoist nameplate. Features include a winding wheel for taking up slack or free stripping of the strap and a handle designed to bend before any mechanical part of the hoist is subject to damaging overload. The handle may be inserted into the U-Frame socket from either direction to facilitate use in confined areas or to allow the operator to pull against the load under unusual conditions. A double, interlocking pawl system provides positive load control at all times. Hot-stick rings on levers and hooks increase safety and utility on models with "D" Suffix.

OPERATION

⚠ CAUTION

Hoist should be checked prior to use. Inspect hooks, all mechanisms, frame and handle for wear, cracks or deformation. Inspect strap for wear, cuts and frays. If defective parts are found, discontinue use of hoist until parts are replaced or repaired. Use only genuine Little Mule Parts for replacement.

⚠ WARNING

The web strap on this hoist is NOT a rated insulating member. When clean and dry, the strap may have dielectric properties typical of nylon or polyester fibers. Use an appropriate insulating member and exercise safe hoist practices as outlined on page 2 of this manual.

Lifting or Pulling

Place control lever in position shown at right, engaging the loading pawl against the ratchet teeth. Work handle as required to get desired operation. Handle may be inserted into either end of the U-Frame socket to enable user to work in restricted areas. Never use a “cheater” bar or handle other than the one supplied with the hoist.

⚠ CAUTION

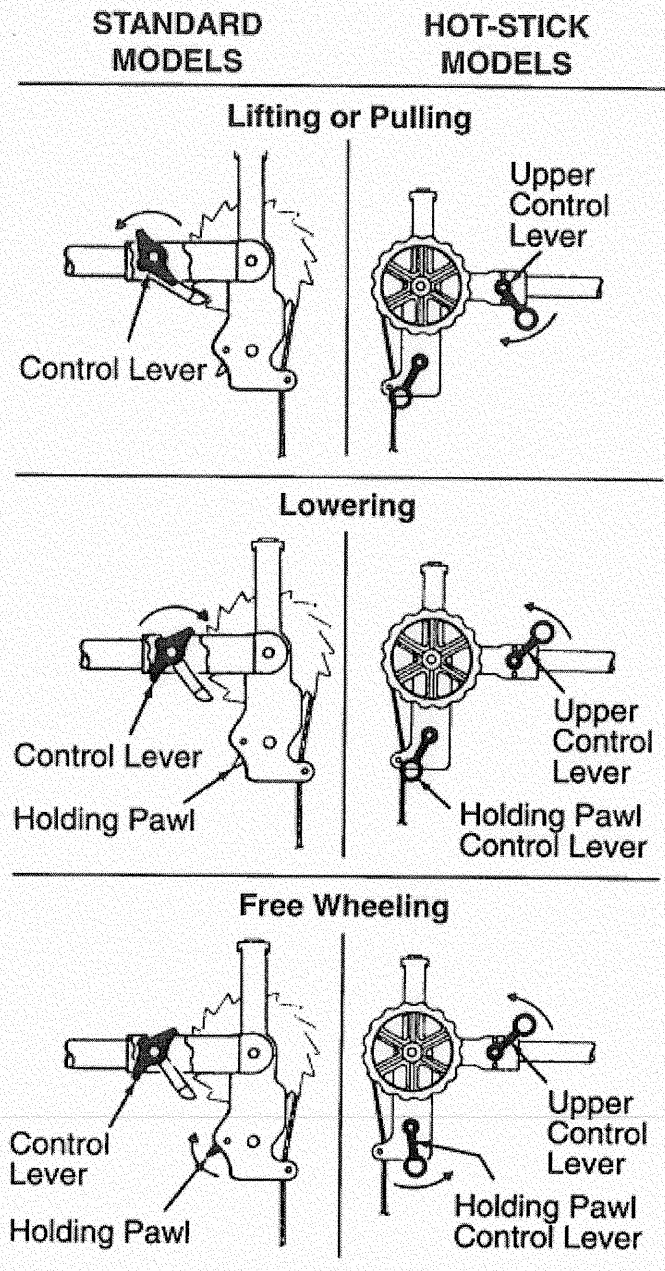
Rig Hoist properly so that the hoist is free to align with the direction of pull. Avoid side loading.

Lowering

Place control lever in position shown at right and operate handle to its extreme down position until load is removed from holding pawl. As the handle is slowly released, the load will be lowered one notch. To continue lowering repeat this operation. The lowering of heavy loads is easier if quick (sharp) downward handle motion is used.

Free wheeling

To release strap for free wheeling, place control lever as shown at right and hold spring-loaded holding pawl as shown. The strap may now be stripped from the drum to facilitate more rapid positioning while attaching to the object to be pulled or lifted. Similarly, with the control lever as shown, excess slack may be quickly and easily rewound on the drum using the winding wheel.



MAINTENANCE

General

Maintenance of the hoist is normally limited to cleaning and lubrication. The hoist should always be lubricated following each cleaning operation to replace any lubricants that were washed away.

Cleaning

Under normal use, minimum cleaning is required. Clean metal parts and web strap with soap or detergent and water. Allow web strap to dry thoroughly before using hoists.

Lubrication

Lubricate pawls and ratchet wheel sparingly with a light grease. Apply a drop of clean motor oil to points where shafts rotate. Caution must be exercised to avoid getting lubricants on web strap.

REMOVAL AND REPLACEMENT OF MAJOR PARTS

General

Replacement instructions are limited to replacing parts that are most likely to wear during normal use. To replace other parts, use common practice procedures while referring to Figures 1 and 2.

Strap Replacement

1. To remove strap, remove all of strap from the drum to expose drive pin (AA). Using a 1/8" pin punch, drive pin from drum. Remove snap ring (E) and shaft (CC). Remove strap from drum. Remove strap from shackle assembly (K) by removing snap ring and shaft.
2. Place new strap into position in shackle assembly (K). Replace shaft and snap ring. Place other end of strap under strap guide roller (RR), so that the cut end of the strap will be against the drum. Place end of strap into slot in drum (KK). Reinstall shaft (CC) and with hole in shaft aligned with drum hole, drive pin (AA) through drum, piercing strap. Replace snap ring (E).

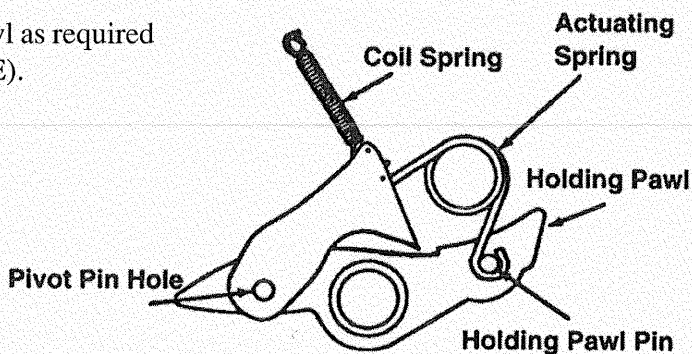
Reversing Spring or Loading Pawl Replacement

1. On models with hot stick levers, drive pin (B) from spring lever (W) using a 1/8" punch. Dislodge two snap rings (E) and while holding loading pawl (T) and reversing control lever (X or W) in place, slide shaft (S) out of U-Frame.
2. Replace reversing spring or loading pawl as required and reinstall shaft (S) and snap rings (E).

Holding Pawl or Pawl Control Assembly Replacement

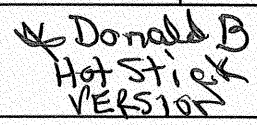
1. On Models with hot stick levers, drive pin (B) from holding pawl (MM) using a 1/8" punch. Dislodge two snap rings (E) and slide shaft (LL) out of main frame.
2. Remove holding pawl and pawl control assembly for replacement of parts as required.
3. Place pawl control assembly spring onto holding pawl pin in correct position as shown below. Install free end of coil spring over hook end of shock spring (PP). Move pawl control assembly, with holding pawl attached, into position and place pivot hole in pawl control assembly over the pivot pin in the main frame. Make sure that pawl control assembly and holding pawl remain in relative position as shown. Reinstall shaft (LL) and two snap rings (E).

PAWL CONTROL ASSEMBLY



PARTS LIST

To order a part for your hoist, specify the complete model number, the name of the part and the complete part number.

Item	Description	250A	300A	250DA	300DA
A	Idler Roller Assembly (Complete)	399B	399B	339DB	339DB
B	Rollpin, 7/8"	H5250	H5250	H5250	H5250
C	Nut, Hook	LM16	LM16	LM16	LM16
D	Hook with Latch	3M003C01S	3M003C01S	3M003C02S	3M003C02S
E	Ring, Retainer	322RR	322RR	322RR	322RR
F	Shaft, Roller	L18-1	L18-1	L18-1	L18-1
G	Ring	L18-3	L18-3	L18-3	L18-3
H	Roller	3495	3495	3495	3495
J	Yoke	394	394	394	394
K	Swivel Shackle Assembly (Complete)	LM335	LM335	LM3435	LM3435
L	Latch Kit	10A	10A	10A	10A
M	Handle Tip Kit (Not Shown)	350K	350K	350K	350K
N	Handle	2050B	2050B	2050B	2050B
P	Handle with Hot Stick Ring	2050DB	2050DB	2050DB	2050DB
Q	Eye Bolt	25	25	25	25
R	Nut, Eye Bolt	LM16	LM16	LM16	LM16
S	Shaft, Loading Pawl	2459R	2459R	245R	245R
T	Pawl, Loading	LM241	LM241	41	41
U	Spring, Reversing	42	42	42	42
V	Lever, Hot Stick	---	---	348D	348D
W	Lever, Spring	---	---	43	43
X	Lever, Reversing	47	47	---	---
Z	Rollpin, 1 1/4"	73-1	73-1	73-1	73-1
AA	Rollpin, 1 1/2"	H5245	H5245	H5245	H5245
BB	Wheel	32R	32R	32R	32R
CC	Shaft, Drum	LM272	LM272	LM272	LM272
DD	Strap	371/10	371/10	371/10	371/10
EE	U-Frame Assembly (Complete)	246	246	346D	346D
GG	U-Frame	240R	240R	240R	240R
JJ	Handle Lock Screw	51	51	51	51
KK	Drum	370R	370R	370R	370R
LL	Shaft, Holding Pawl	219R	219R	219R 319 DR	219R 319 DR
MM	Pawl, Holding	21Z	21Z	21Z	21Z
NN	Control Pawl Assembly	20G	20G	20G	20G
PP	Spring	31	31	31	31
QQ	Rollpin, 2 1/4"	H5257	H5257	H5257	H5257
RR	Roller, Guide	LM327	LM327	LM327	LM327
SS	Main Frame with Bearings	311	311	311	311
TT	Latch Kit	10A	10A	10A	10A
<div style="display: flex; justify-content: space-between; align-items: center;"> <div>Order Parts from your Little Mule Distributor</div> <div>  </div> </div>					

Modela 250A and 300A

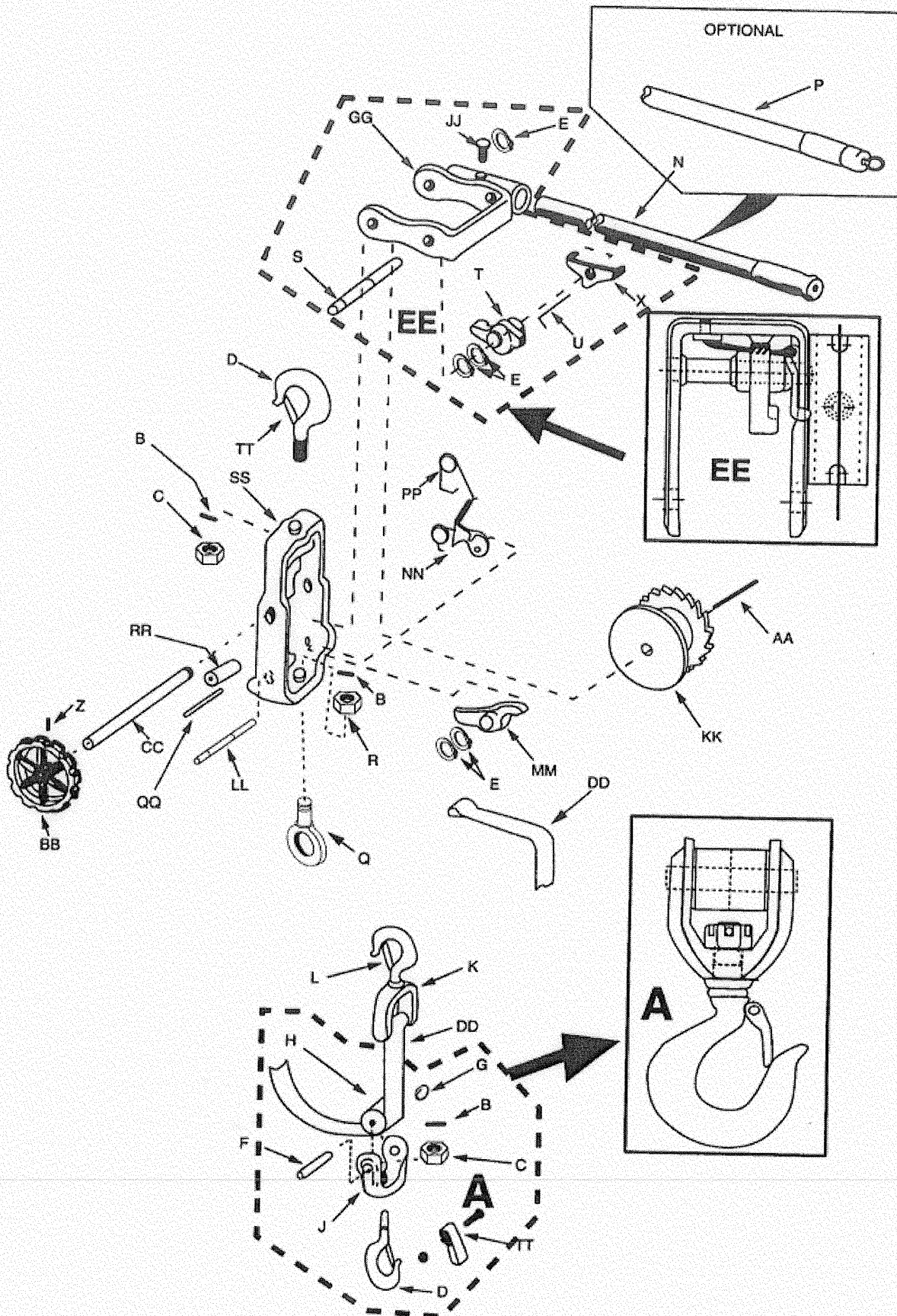


Figure 1

Models 250DA and 300DA

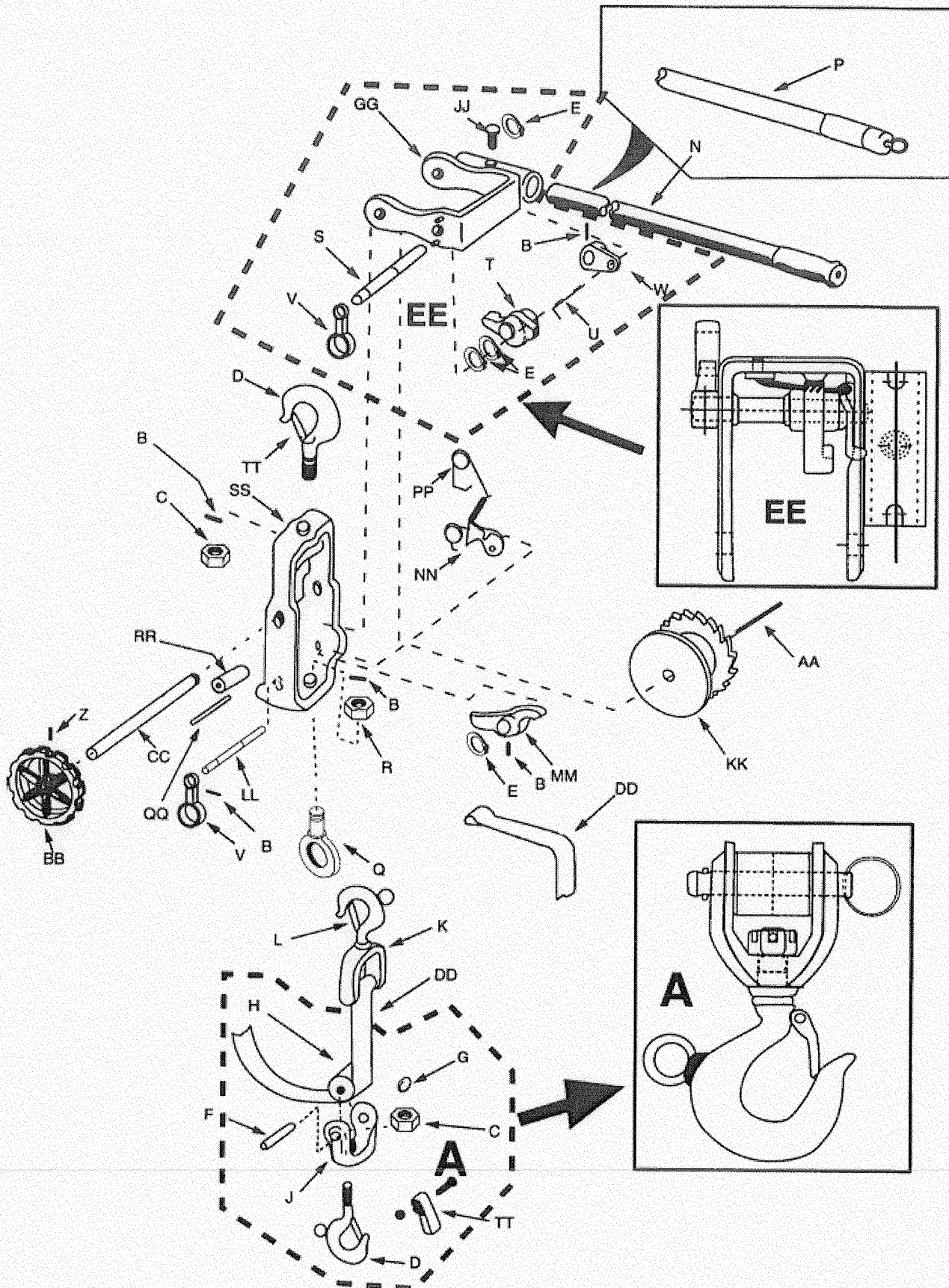


Figure 2



LIFETIME WARRANTY

Every hoist is thoroughly inspected and tested prior to shipment from the factory. Should any problems develop, return the complete hoist prepaid to your nearest Little Mule® Authorized Warranty Repair Station. If inspection reveals that the problem is caused by defective workmanship or material, repairs will be made without charge, and the hoist will be returned, transportation prepaid.

This warranty does not apply where:

- (1) deterioration is caused by normal wear, abuse, improper or inadequate power supply, eccentric or side loading, overloading, chemical or abrasive actions, improper maintenance or excessive heat;
- (2) problems resulted from repairs, modifications

or alterations made by persons other than factory or Little Mule® Authorized Warranty Repair Station personnel;

- (3) the hoist has been abused or damaged as a result of an accident;
- (4) repair parts or accessories other than those supplied by Little Mule® are used on the hoist. Equipment and accessories not of the seller's manufacture are warranted only to the extent that they are warranted by the manufacturer.

EXCEPT AS STATED HERIN, LITTLE MULE® MAKES NO OTHER WARRANTIES, EXPRESSED OR IMPLIED, INCLUDING WARRANTIES OF MERCHANTABILITY AND FITNESS FOR A PARTICULAR PURPOSE.

WARNING

Alterations or modifications of equipment and use of non-factory repair parts can lead to dangerous operation and injury.

TO AVOID INJURY:

- † Do not alter or modify equipment
- Do not use equipment to lift, support or otherwise transport people
- Do not suspend unattended loads over people



Country Club Road P.O. Box 779
Wadesboro, NC 28170 U.S.A.
Phone: 800-477-5003 704-694-2156
Fax: 800-374-6853