

COFFING ELECTRIC CHAIN HOISTS

OPERATING AND MAINTENANCE INSTRUCTIONS AND PARTS LISTS FOR **JF** SERIES HOISTS

IMPORTANT - CAUTION

This manual contains important information for the correct installation, operation, and maintenance of this equipment. All persons involved in the installation, operation, and maintenance of this equipment should be thoroughly familiar with the contents of this manual. To safeguard against the possibility of personal injury or property damage, follow the recommendations and instructions of this manual. Keep this manual for reference and further use.

Publication
PART NO.
JF-680-5

© DUFF-NORTON COMPANY, INC. 1978
CHARLOTTE, NORTH CAROLINA, U.S.A.
ALL RIGHTS RESERVED

Duff-Norton

Amstar

Duff-Norton Company, P.O. Box 32605, Charlotte, North Carolina 28232 (704) 588-0300

FIGURE 7-1. BASIC HOIST

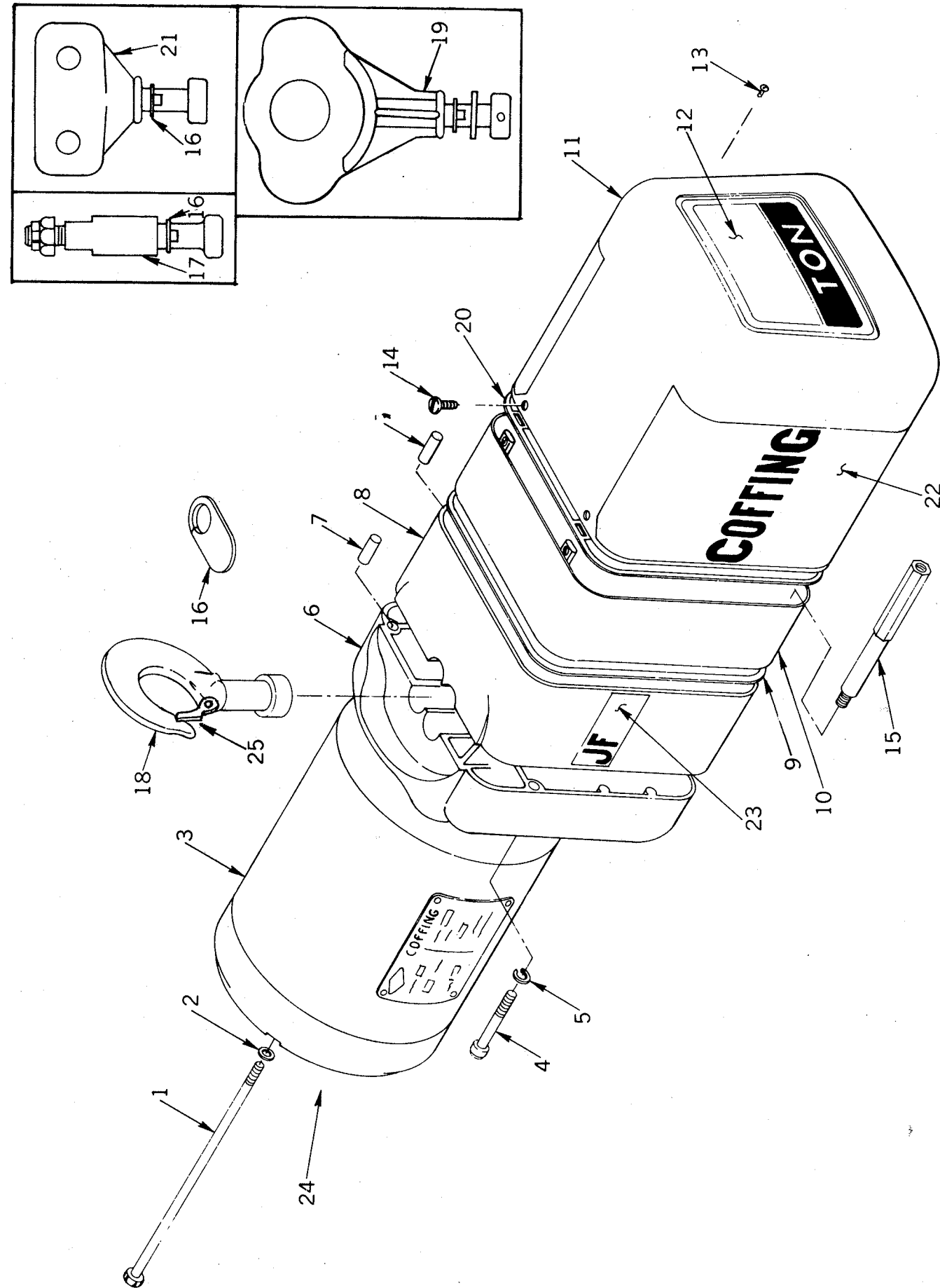
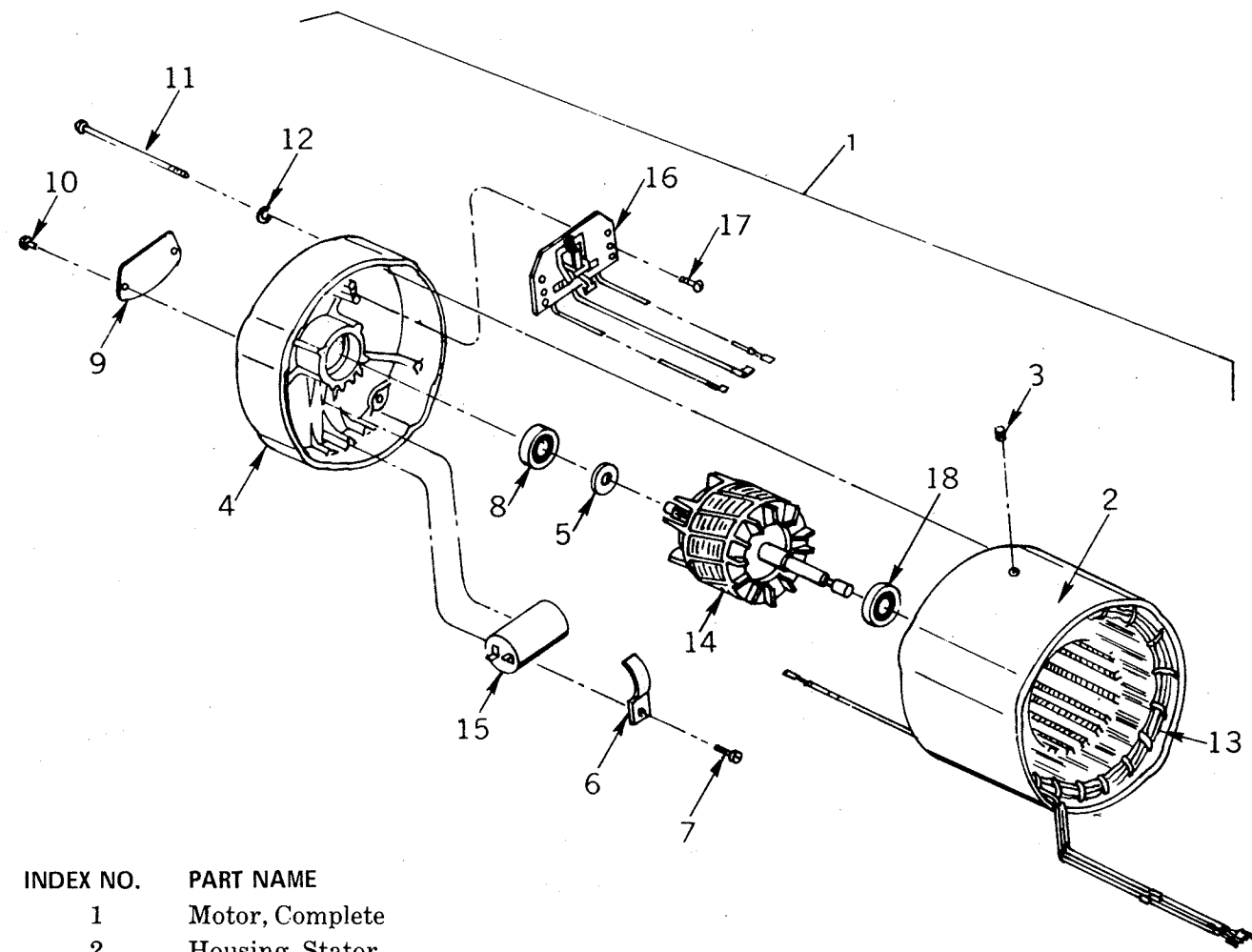


FIGURE 7-1. BASIC HOIST

FIG. NO.	PART NAME
1	Screw, Motor Mount
2	Lock Washer
3	Motor, Complete (Reference—See Figure 7-2)
4	Screw, Sheave Housing
5	Lock Washer
6	Housing, Sheave
7	Pin, Dowel
8	Housing, Gear
9	Gasket, Gear Case
10	Cover, Gear Box
11	Cover, Electrical
12	Plate, Capacity
13	Screw, Drive
14	Screw
15	Stud Post
16	Cover, Hook Hole
17	Lug Assembly, Rigid or Swivel
18	Hook Assembly, With Latch, Top, Rigid or Swivel
19	Lug Assembly, Multi-Purpose, Rigid or Swivel
20	Gasket
21	Lug, Suspension, Rigid
22	Decal, Coffing
23	Decal, Tonnage
24	Decal, Motor End
25	Hook Latch Kit

FOR PART NUMBERS SEE FIGURE 7-1 OF CURRENT PARTS LIST.

FIGURE 7-2A. MOTOR PARTS
($\frac{1}{4}$ AND $\frac{1}{2}$ HP MOTORS FOR HOISTS WITH SERIAL NUMBERS
JF-10799M4 AND BELOW, SINGLE AND THREE PHASE)

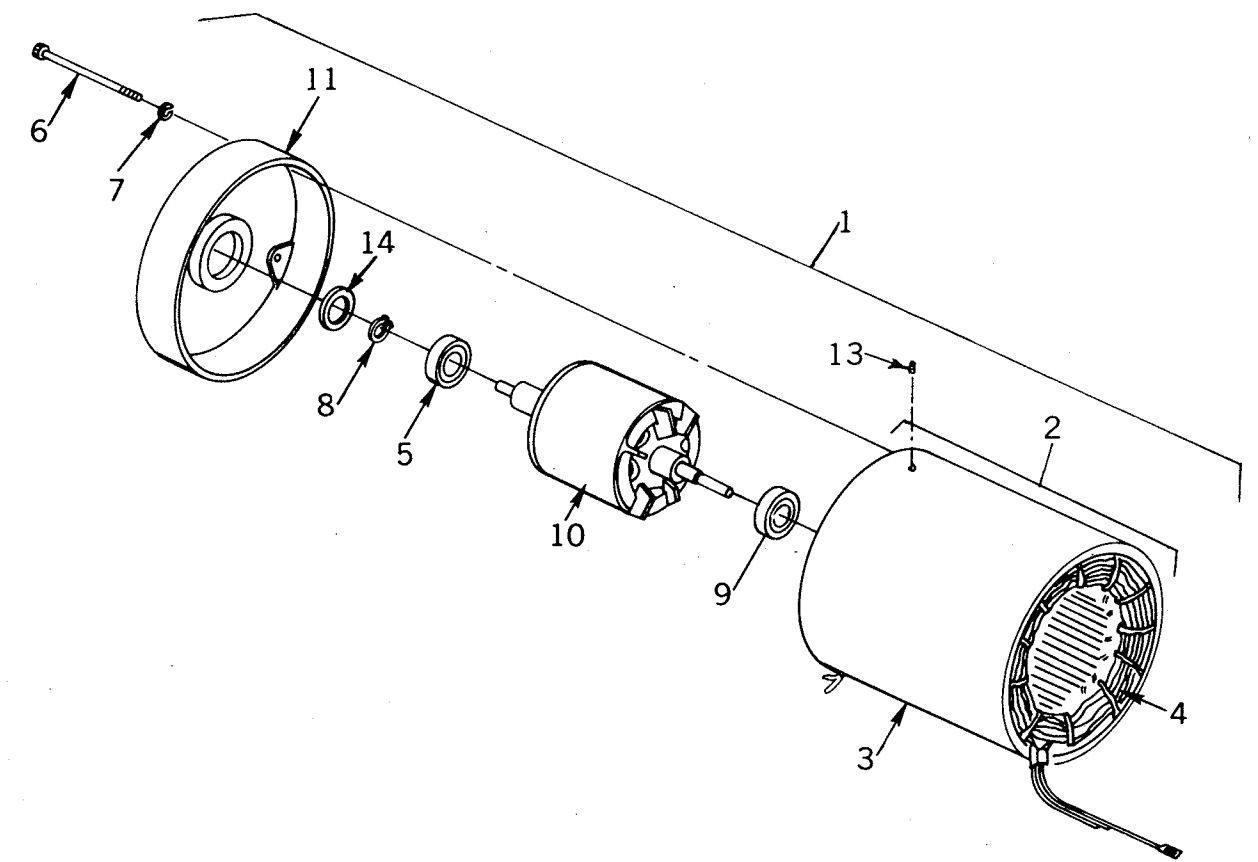


INDEX NO.	PART NAME
1	Motor, Complete
2	Housing, Stator
3	Screw, Stator Lock
4	End Shield
5	Spacer
6	Clamp, Capacitor, Single Phase Only
7	Screw, Clamp, Single Phase Only
8	Bearing, Front
9	Name Plate, Motor
10	Screw, Motor Name Plate
11	Screw, Motor Mount (Reference—See Figure 7-1)
12	Lock Washer (Reference—See Figure 7-1)
13	Stator
14	Rotor and Shaft Assembly
15	Capacitor, Single Phase Only
16	Switch, Stationary, Single Phase Only
17	Screw, Switch, Single Phase Only
18	Bearing, Rear

When ordering repair parts for motors, give motor model numbers for Jack & Heintz and Doerr motors. Give complete motor nameplate data for all other motors.

FOR PART NUMBERS SEE FIGURE 7-2A OF CURRENT PARTS LIST.

FIGURE 7-2B. MOTOR PARTS
(ALL 3 PHASE MOTORS, EXCEPT FOR $\frac{1}{4}$ AND $\frac{1}{2}$ HP MOTORS
WITH HOIST SERIAL NUMBERS JF-10799M4 AND BELOW)

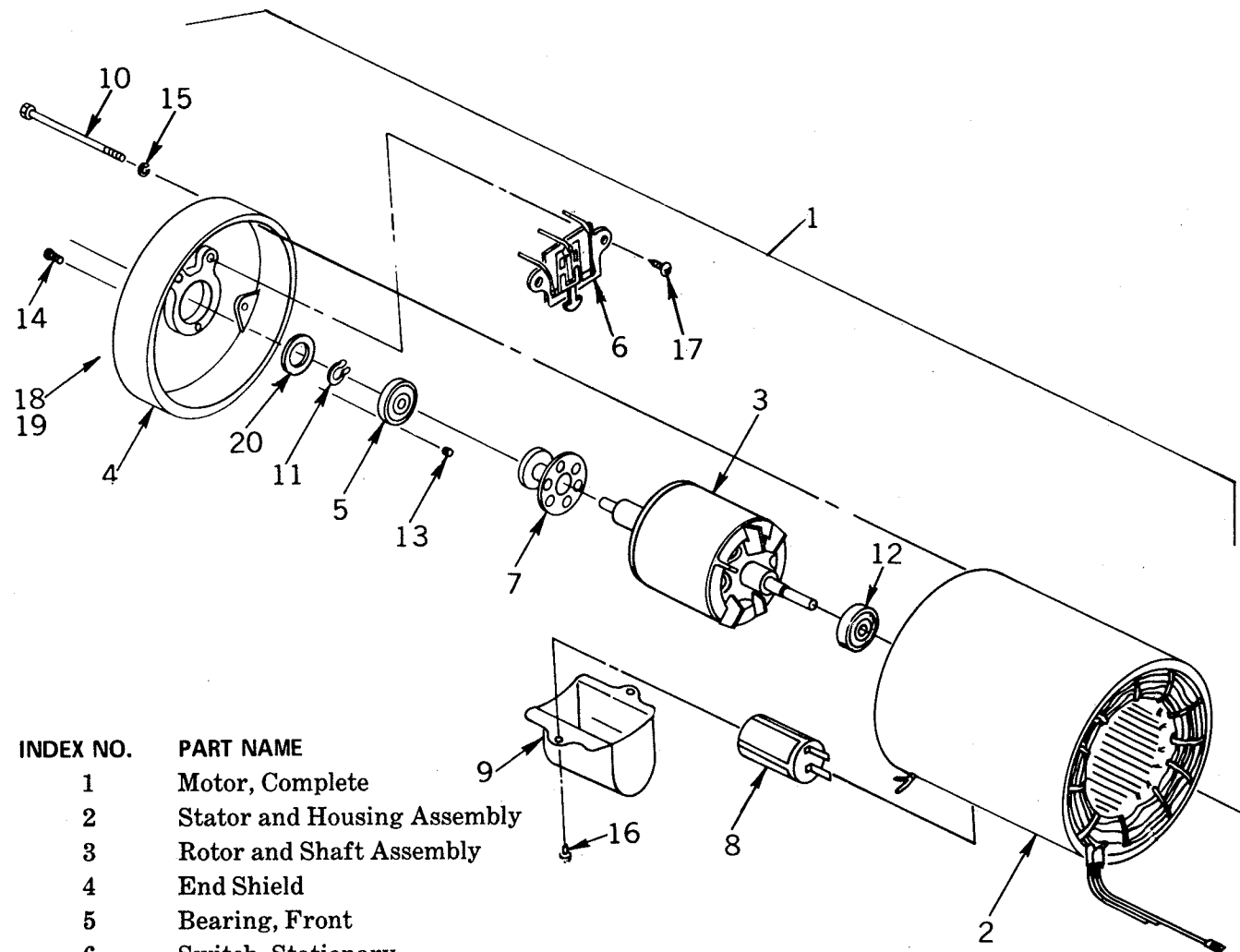


INDEX NO.	PART NAME
1	Motor, Complete
2	Stator and Housing Assembly (Consists of Index Nos. 3-4)
3	Housing, Stator
4	Stator
5	Bearing, Front
6	Screw, Motor Mount (Reference—See Figure 7-1)
7	Lock Washer (Reference—See Figure 7-1)
8	Ring, Retaining
9	Bearing, Rear
10	Rotor and Shaft Assembly
11	End Shield
12*	Nameplate
13	Screw, Stator Lock
14	Washer, Shim
	* Not Illustrated

When ordering repair parts for motors, give motor model numbers for Jack & Heintz and Doerr motors. Give complete motor nameplate data for all other motors.

FOR PART NUMBERS SEE FIGURE 7-2B OF CURRENT PARTS LIST.

FIGURE 7-2C. MOTOR PARTS
 (ALL ¼ AND ½ HP SINGLE PHASE MOTORS WITH SERIAL NUMBERS
 JF-64J001D AND ABOVE AND ALL SINGLE PHASE ¾ AND 1 HP MOTORS)

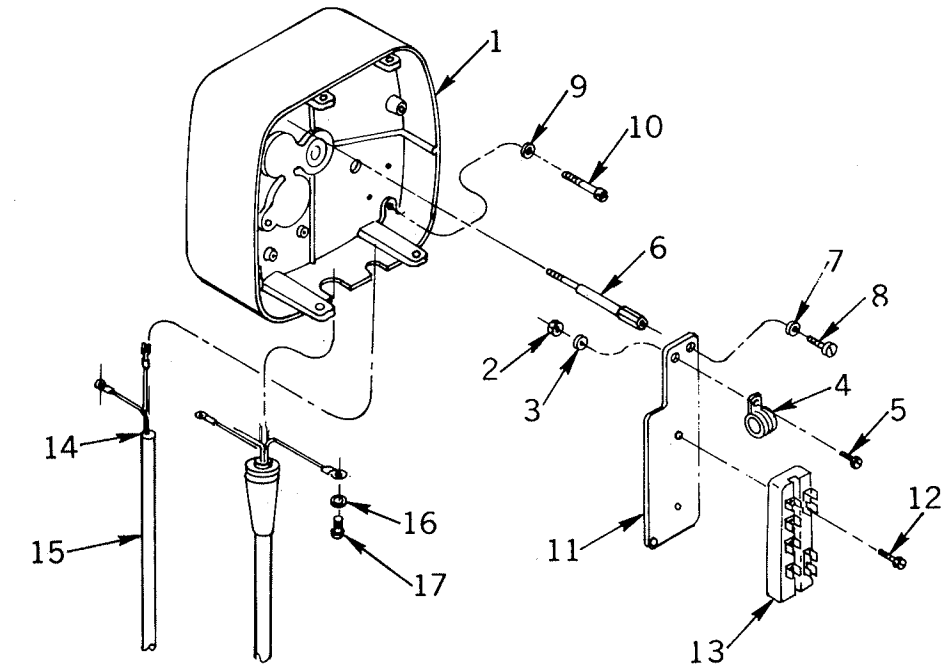


INDEX NO.	PART NAME
1	Motor, Complete
2	Stator and Housing Assembly
3	Rotor and Shaft Assembly
4	End Shield
5	Bearing, Front
6	Switch, Stationary
7	Switch, Rotating
8	Capacitor
9	Cover, Capacitor
10	Screw, Motor Mount (Reference—See Figure 7-1)
11	Ring, Retaining
12	Bearing, Rear
13	Flange Nut
14	Screw
15	Lock Washer (Reference—See Figure 7-1)
16	Screw
17	Screw
18	Nameplate, Motor
19	Gasket, Motor Nameplate
20	Washer, Shim

When ordering repair parts for motors, give motor model numbers for Jack & Heintz and Doerr motors. Give complete motor nameplate data for all other motors.

FOR PART NUMBERS SEE FIGURE 7-2C OF CURRENT PARTS LIST.

FIGURE 7-3A. ELECTRICAL PARTS
 (SINGLE SPEED, 115 VOLT, 7 WIRE PUSH-BUTTON CONTROL)



INDEX NO.	PART NAME
1	Cover, Gear Box (Reference—See Figure 7-1)
2	Nut, Cable Clamp
3	Lock Washer
4	Clamp, Cable
5	Screw, Cable Clamp
6	Stud Post (Reference—See Figure 7-1)
7	Lock Washer
8	Screw
9	Lock Washer
10	Screw
11	Plate, Electrical Panel
12	Screw
13	Block Terminal
14	Relief, Strain
15	Power Cable Assembly
16	Washer, Flat
17	Screw

FOR PART NUMBERS SEE FIGURE 7-3A OF CURRENT PARTS LIST.

FIGURE 7-3B. ELECTRICAL PARTS
(SINGLE SPEED HOIST, MAGNETIC CONTACTOR TYPE)

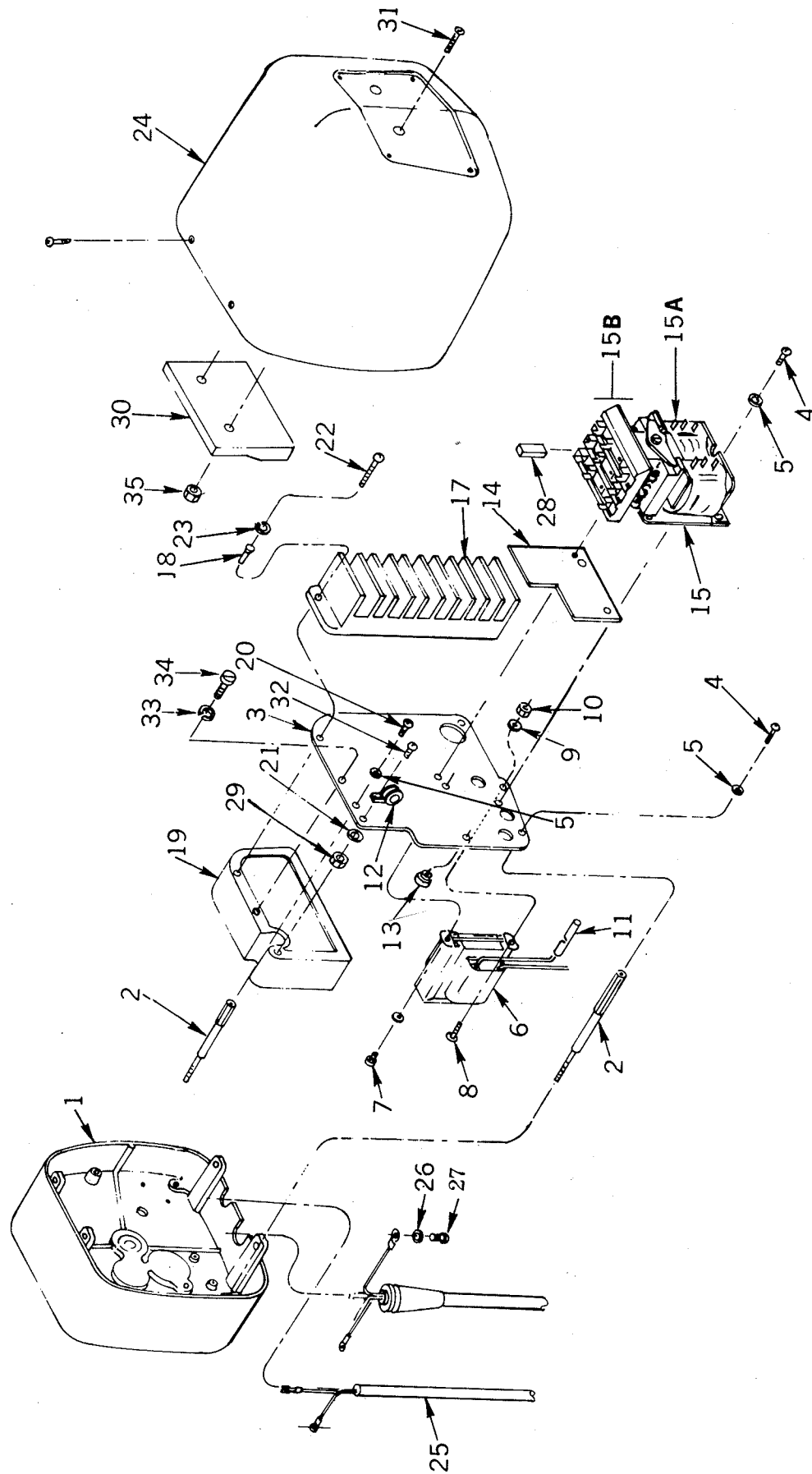


FIGURE 7-3B. ELECTRICAL PARTS
(SINGLE SPEED HOIST, MAGNETIC CONTACTOR TYPE)

INDEX NO.	PART NAME
1	Cover, Gear Box (Reference—See Figure 7-1)
2	Stud Post (Reference—See Figure 7-1)
3	Plate, Electric Panel
4	Screw
5	Lock Washer
6	Transformer
7	Screw
8	Screw
9	Lock Washer
10	Nut
11	Connector, Splice
12	Clamp, Cable
13	Plug Nut
14	Insulator
15	Contactors, Reversing Magnetic (Complete)
15A	Contactors, Coil
15B	Contactors, Service Parts Kit
17	Block, Terminal
18	Eyelet, Terminal Block
19*	Counterweight
20	Screw
21	Lock Washer
22*	Screw
23*	Lock Washer
24	Cover, Electrical (Reference—See Figure 7-1)
25	Power Cable
26	Washer, Flat
27	Screw
28	Insulator, Terminal
29	Nut
30	Adapter, Cover
31	Screw
32	Screw, Cable Clamp
33*	Screw
34*	Lockwasher
35	Nut

*Used on shoe brake models only.

FOR PART NUMBERS SEE FIGURE 7-3B OF CURRENT PARTS LIST.

FIGURE 7-3C. ELECTRICAL PARTS
(TWO SPEED HOISTS)

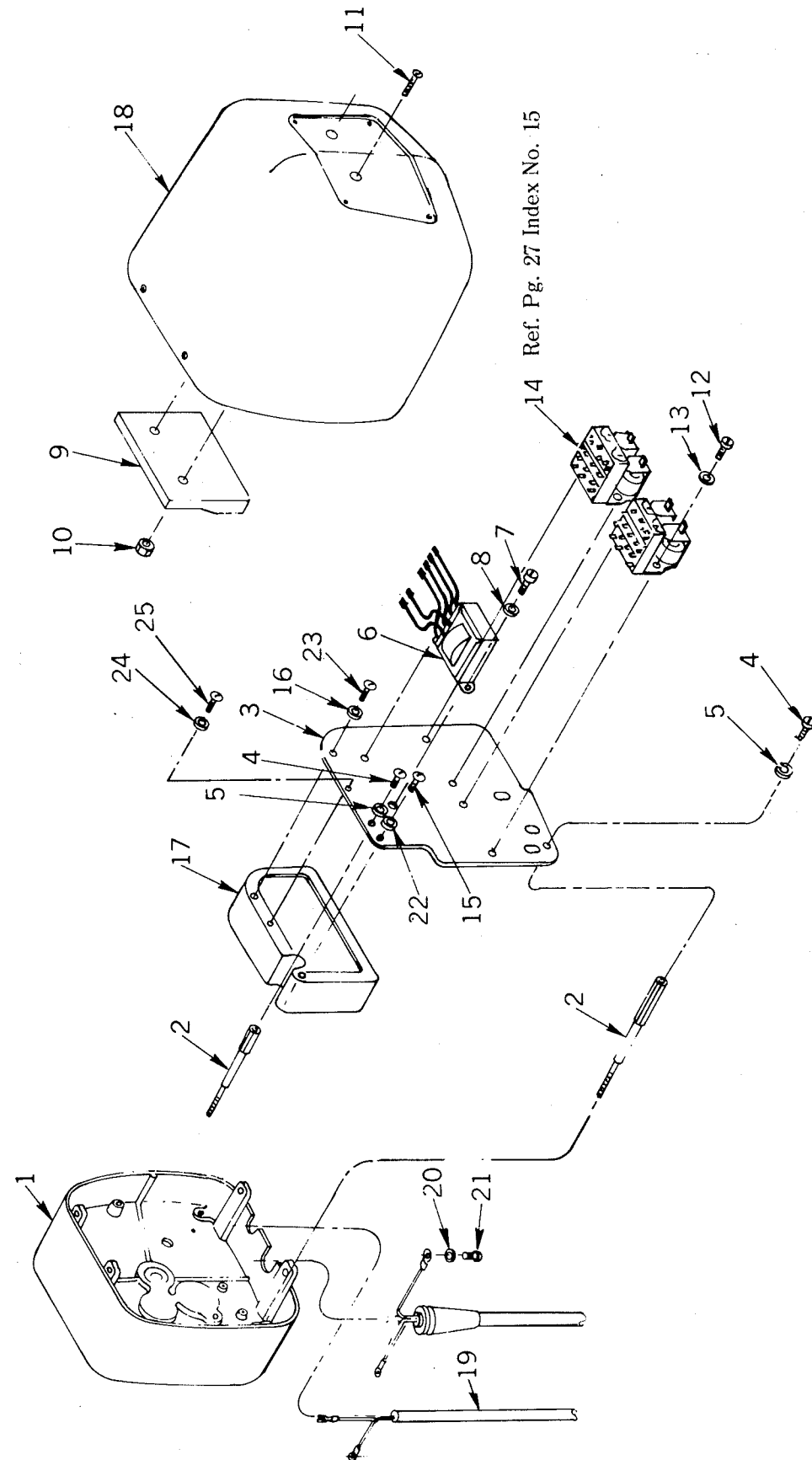


FIGURE 7-3C. ELECTRICAL PARTS
(TWO SPEED HOISTS)

FIG NO.	PART NAME
1	Cover, Gear Box (Reference—See Figure 7-1)
2	Stud Post (Reference—See Figure 7-1)
3	Plate, Electrical Panel
4	Screw
5	Lock Washer
6	Transformer
7	Screw
8	Lock Washer
9	Counterweight
10	Nut
11	Screw
12	Screw
13	Lock Washer
14	Contactors, Magnetic Reversing (Complete)
14A	Contactors, Coil
14B	Contactors, Service Parts Kit
15	Screw
16*	Lock Washer
17*	Counterweight
18	Cover, Electrical (Reference—See Figure 7-1)
19	Power Cable
20	Flat Washer
21	Screw
22	Lock Washer
23*	Screw
24*	Lock Washer
25*	Screw

* Used on shoe brake models only.

FOR PART NUMBERS SEE FIGURE 7-3C OF CURRENT PARTS LIST.

FIGURE 7-4. TRANSMISSION

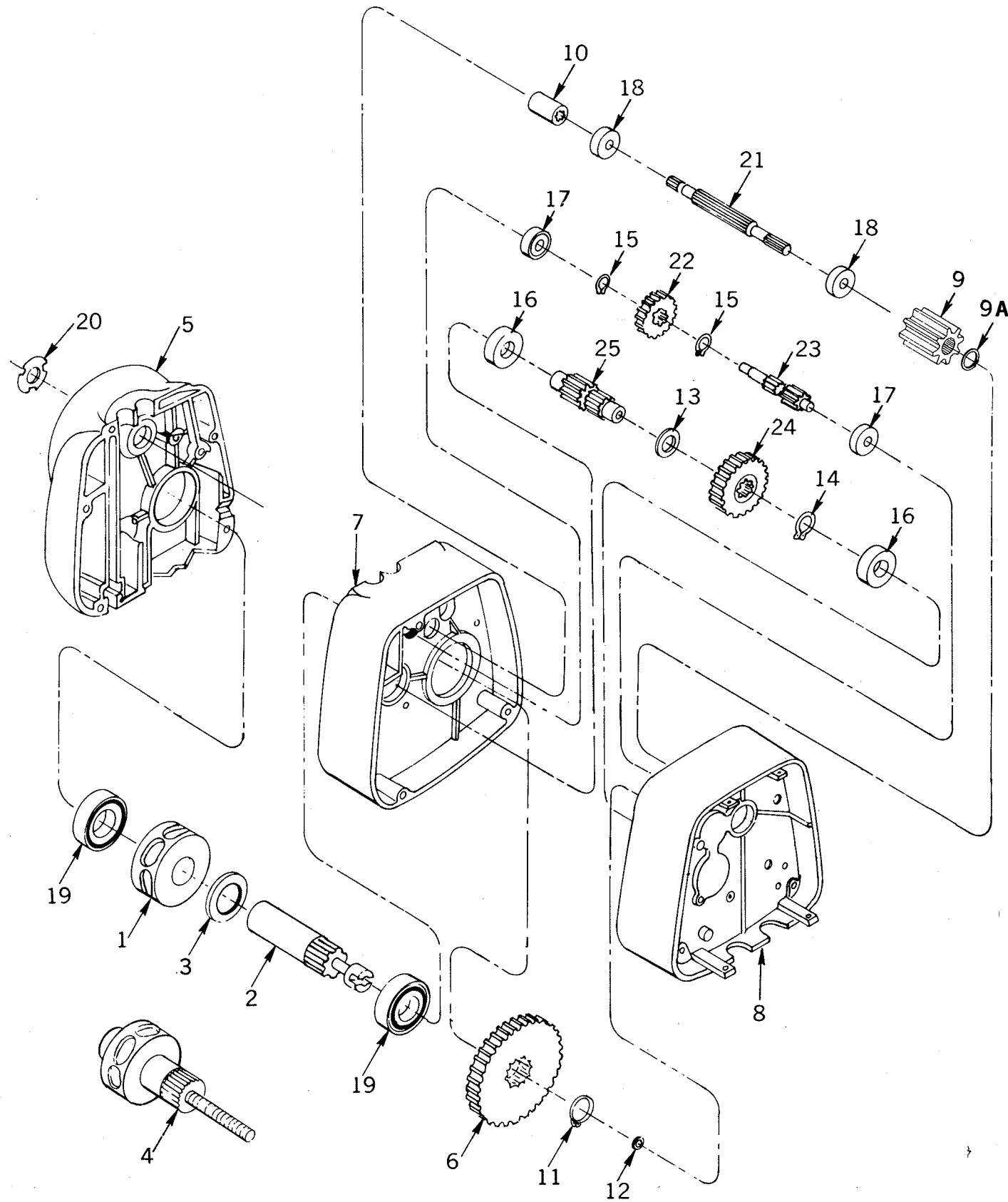


FIGURE 7-4. TRANSMISSION

INDEX NO.	PART NAME
1	Sheave, Load (Reference—See Figure 7-5)
2	Shaft Assembly, Load (Reference—See Figure 7-5)
3	Spacer (Reference—See Figure 7-5)
4	Load Sheave and Limit Switch Shaft Assembly, 1/4" Chain (Reference—See Figure 7-5)
5	Housing, Sheave (Reference—See Figure 7-5)
6	Gear, Output
7	Housing, Gear (Reference—See Figure 7-1)
8	Cover, Gear Box (Reference—See Figure 7-1)
9	Adaptor
9a	Retaining Ring
10	Coupling, Motor
11	Ring, Retaining
12	"O" Ring (Reference—See Figures 7-6A and 7-6B)
13	Spacer, Gear—Used on shoe brake units only.
14	Ring, Retaining
15	Ring, Retaining
16	Bearing
17	Bearing
18	Bearing
19	Bearing (Reference—See Figure 7-5)
20	Spring, Bearing Load
21	Pinion, Driving
22	Gear, High Speed
23	Pinion, High Speed
24	Gear, Intermediate
25	Pinion, Intermediate
26*	Lubricant * Not Illustrated

FOR PART NUMBERS SEE FIGURE 7-4 OF CURRENT PARTS LIST.

FIGURE 7-5. CHAINING PARTS

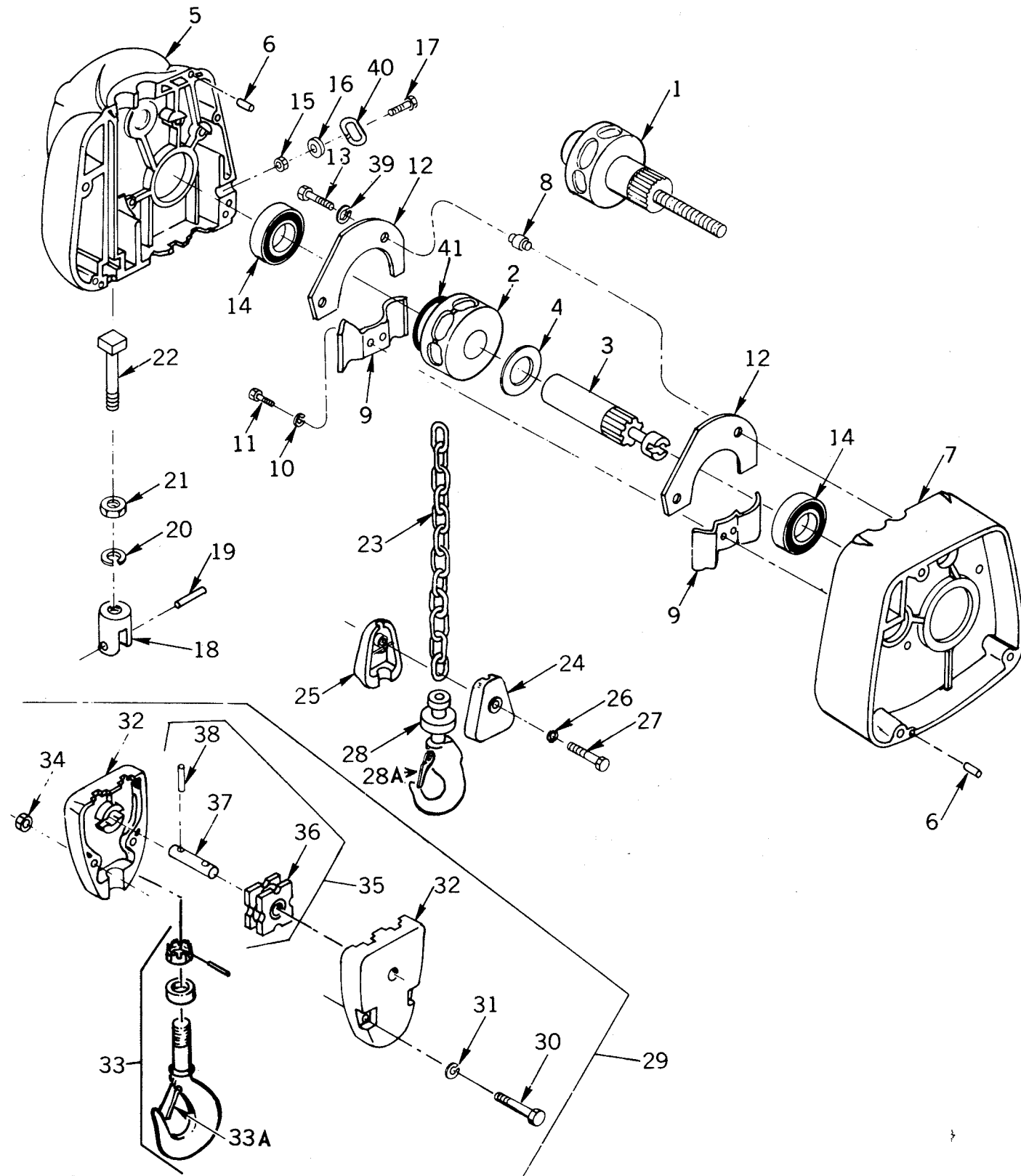


FIGURE 7-5. CHAINING PARTS

INDEX NO.	PART NAME
1	Load Sheave and Limit Switch Shaft Assembly (1/4" Chain)
2	Sheave, Load
3	Load Shaft Assembly
4	Spacer (9/32" Chain)
5	Housing, Sheave (Reference—See Figure 7-1)
6	Pin, Dowel
7	Housing, Gear (Reference—See Section 7-1)
8	Spacer, Chain Guide
9	Guide, Chain
10	Lock Washer
11	Screw, Chain Guide
12	Plate, Chain Guide
13	Screw, Chain Guide Plate
14	Bearing
15	Nut, Dead End Screw
16	Washer, Flat
17	Screw, Dead End
18	Support, Chain
19	Pin, Chain Support
20	Lock Washer
21	Nut, Support Screw
22	Screw, Support
23	Chain
24	Frame, Single Chain Load Block (Unthreaded)
25	Frame, Single Chain Load Block (Threaded)
26	Lock Washer
27	Screw, Load Block
28	Hook Assembly with Latch, Bottom
28a	Latch Kit
29	Load Block Assembly, Double Chain (Consists of Index Nos. 30-38)
30	Screw, Load Block
31	Lock Washer
32	Frame, Double Chain Load Block
33	Hook Assembly with Latch, Bottom
33a	Latch Kit
34	Nut, Load Block Screw
35	Shaft Assembly, Load Block (Consists of Index Nos. 36-38)
36	Sheave and Bearing Assembly
37	Shaft, Load Block
38	Pin, Load Block Shaft
39	Lock Washer
40	Link, Dead End
41	"O" Ring

FOR PART NUMBERS SEE FIGURE 7-5 OF CURRENT PARTS LIST.

FIGURE 7-6A. STANDARD LIMIT SWITCH PARTS

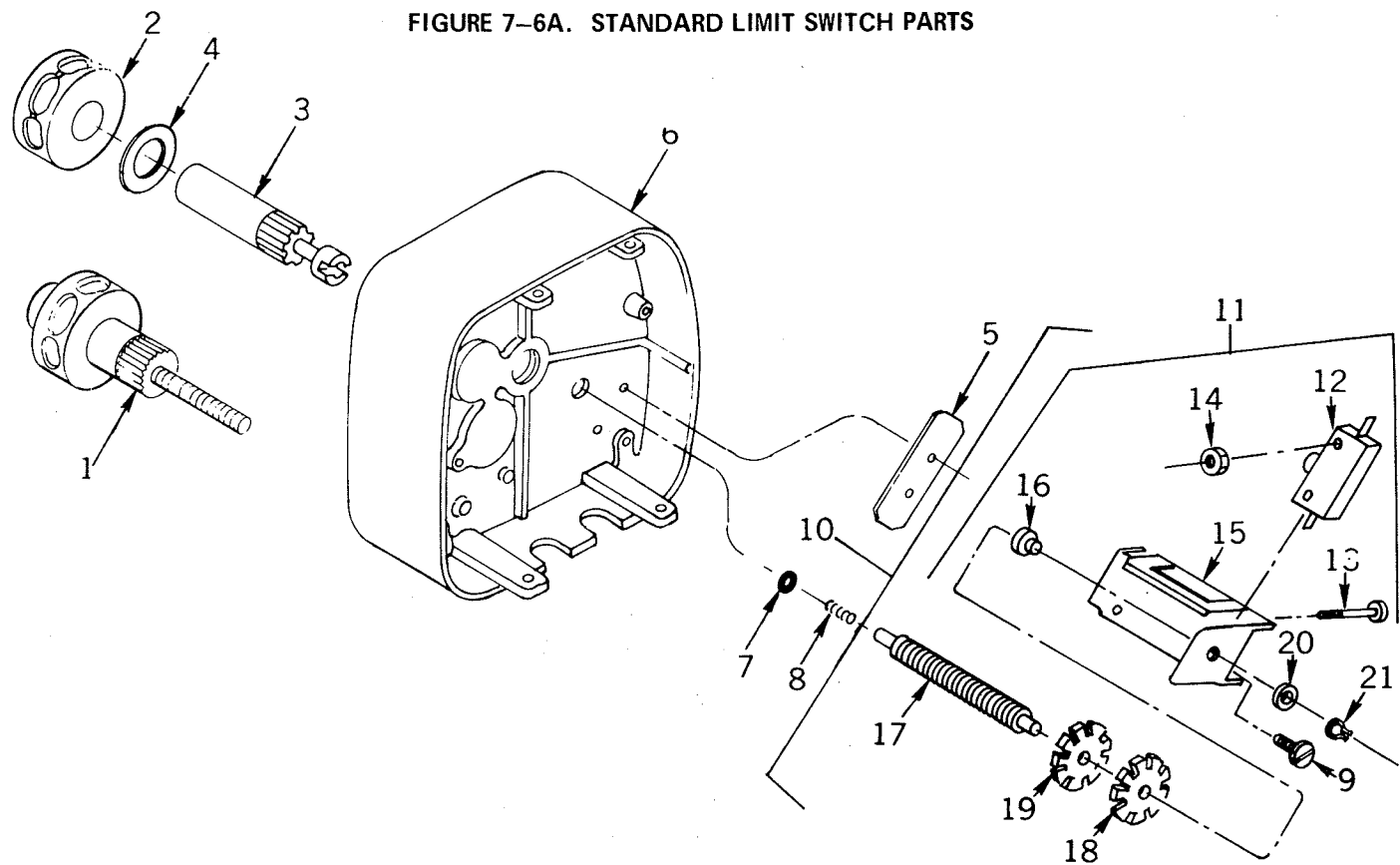


FIGURE 7-6A. STANDARD LIMIT SWITCH PARTS

INDEX NO.	PART NAME	INDEX NO.	PART NAME
1	Load Sheave and Limit Switch Shaft Assembly (Reference—See Figure 7-5)	11	Limit Switch Assembly (Consists of Index Nos. 12-15)
2	Sheave, Load (Reference—See Figure 7-5)	12	Switch
3	Load Shaft Assembly (Reference—See Figure 7-5)	13	Screw
4	Spacer (9/32" Chain) (Reference—See Figure 7-5)	14	Nut
5	Insulator	15	Limit Switch Bracket Assembly
6	Cover, Gear Box (Reference—See Figure 7-1)	16	Bearing, Bronze (Component of Index No. 15—can be purchased separately)
7	"O" Ring	17	Shaft, Limit Switch
8	Spring	18	Nut, Limit Switch (Red)
9	Screw	19	Nut, Limit Switch (Green)
10	Limit Switch and Shaft Assembly (Consists of Index Nos. 11-21)	20	Washer, Thrust
		21	Ring, Retaining

FOR PART NUMBERS SEE FIGURE 7-6A OF CURRENT PARTS LIST.

FIGURE 7-6B. GEARED LIMIT SWITCH PARTS

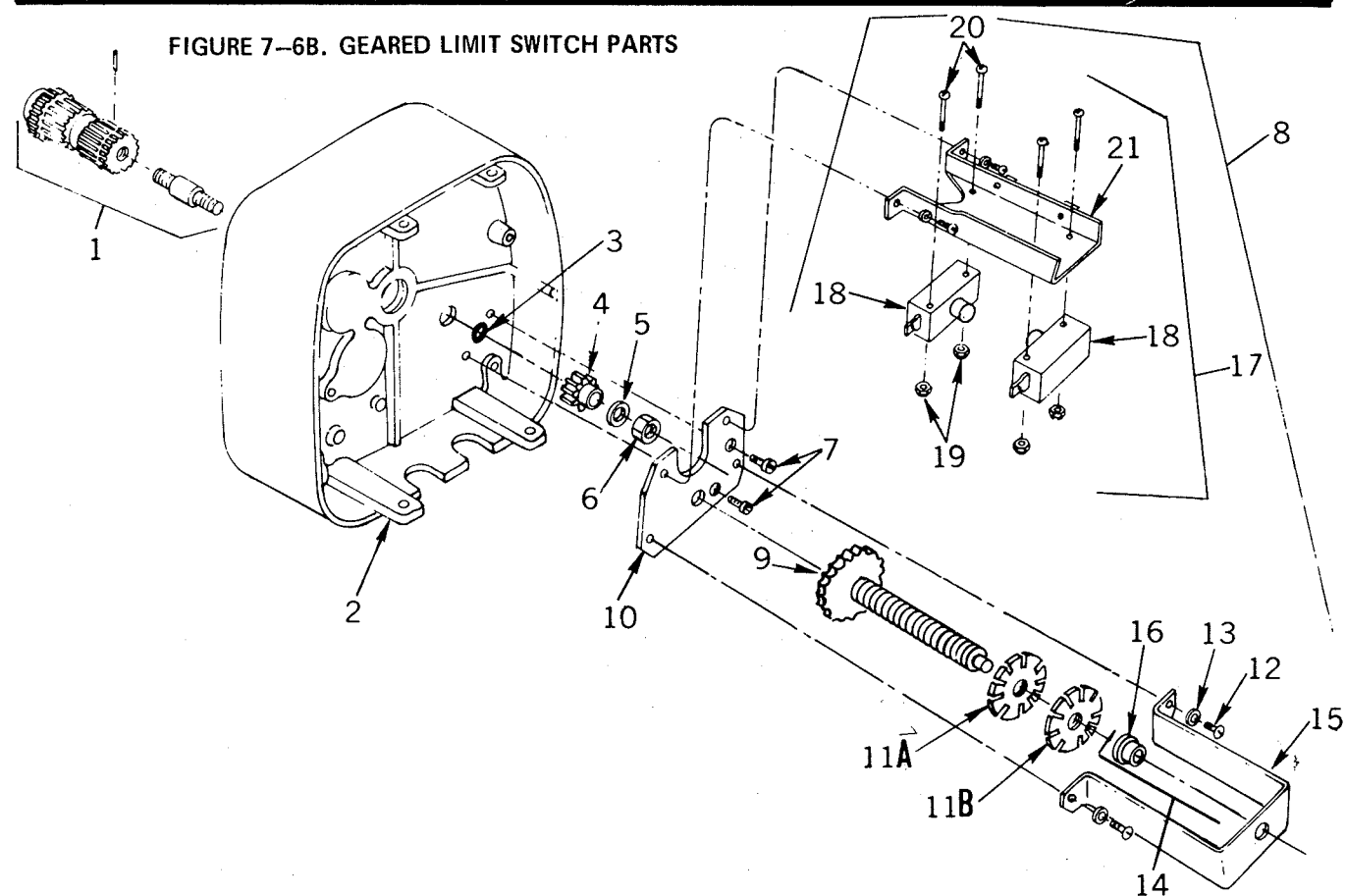


FIGURE 7-6B. GEARED LIMIT SWITCH PARTS

INDEX NO.	PART NAME
1	Load Shaft Assembly (Reference—See Figure 7-5)
2	Cover, Gear Box (Reference—See Figure 7-1)
3	"O" Ring
4	Pinion
5	Lock Washer
6	Nut
7	Screw
8	Limit Switch Assembly (Consists of Index Nos. 9-21)
9	Shaft and Gear Assembly
10	Base
11A	Nut, Limit Switch
11B	Nut, Limit Switch
12	Screw
13	Lock Washer
14	Bracket and Bearing Assembly (Consists of Index Nos. 15-16)
15	Bracket
16	Bearing, Bronze
17	Limit Switch and Bracket Assembly (Consists of Index Nos. 18-20)
18	Switch
19	Nut
20	Screw
21	Limit Switch and Bracket Assembly

FOR PART NUMBERS SEE FIGURE 7-6B OF CURRENT PARTS LIST.

FIGURE 7-7A. BRAKE AND SOLENOID PARTS
(DISC TYPE)

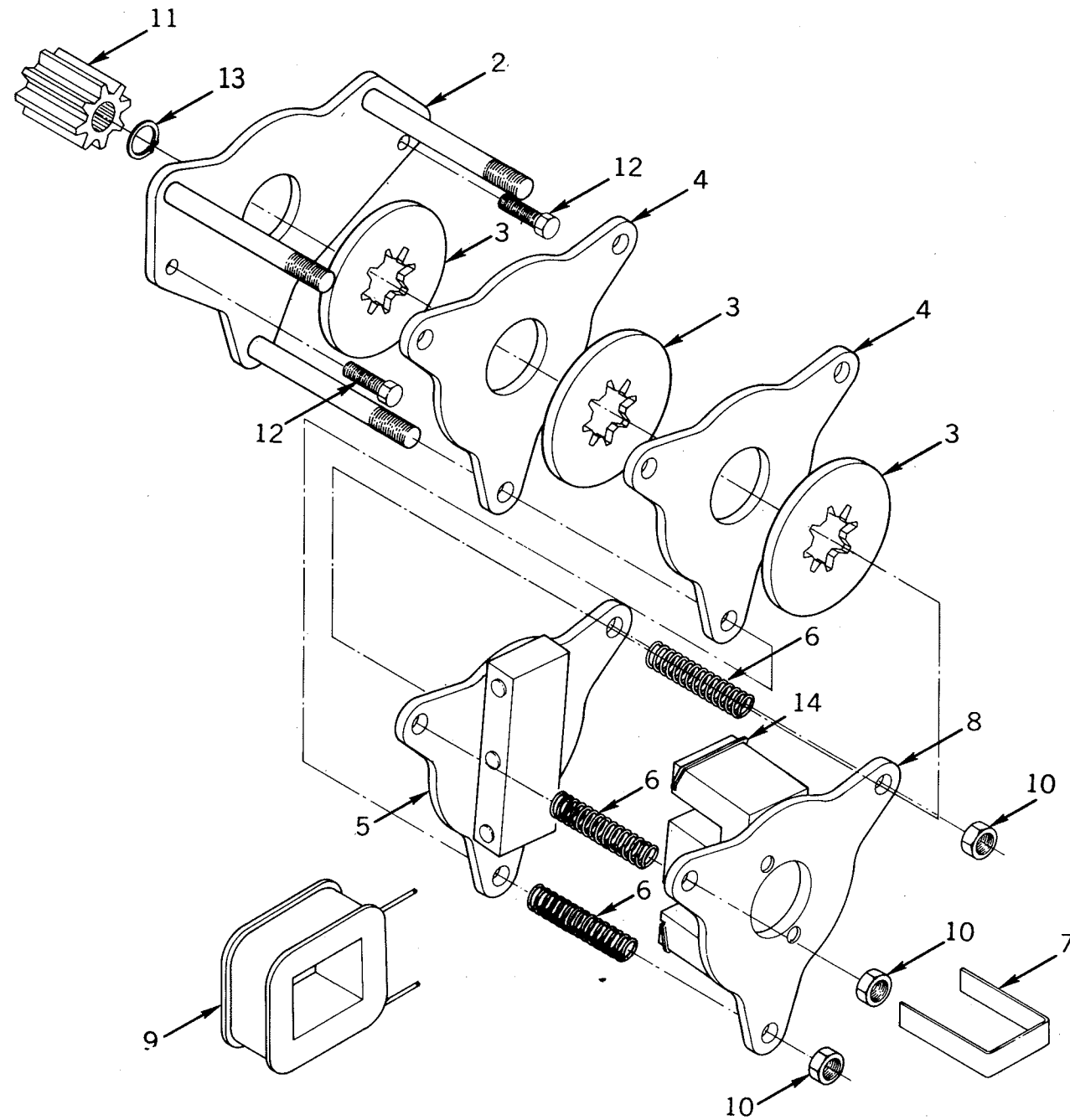


FIGURE 7-7A. BRAKE AND SOLENOID PARTS
(DISC TYPE)

INDEX NO.	PART NAME
1	Disc Brake Assembly (Consists of Index Nos. 2-10)
2	Plate and Stud Assembly
3	Disc, Brake
4	Plate, Brake
5	Plate and Armature Assembly
6	Spring
7	Retainer
8	Plate and Frame Assembly (Includes index no. 14)
9	Coil
10	Lock Nut
11*	Adapter
12*	Lock Screw
13*	Retaining Ring
14**	Shading Coil Element
15	Adhesive (Not shown)

*Not included with brake assembly—
order separately.

**Replacement requires use of adhesive.

FIGURE 7-7B. BRAKE AND SOLENOID PARTS
(SHOE TYPE)

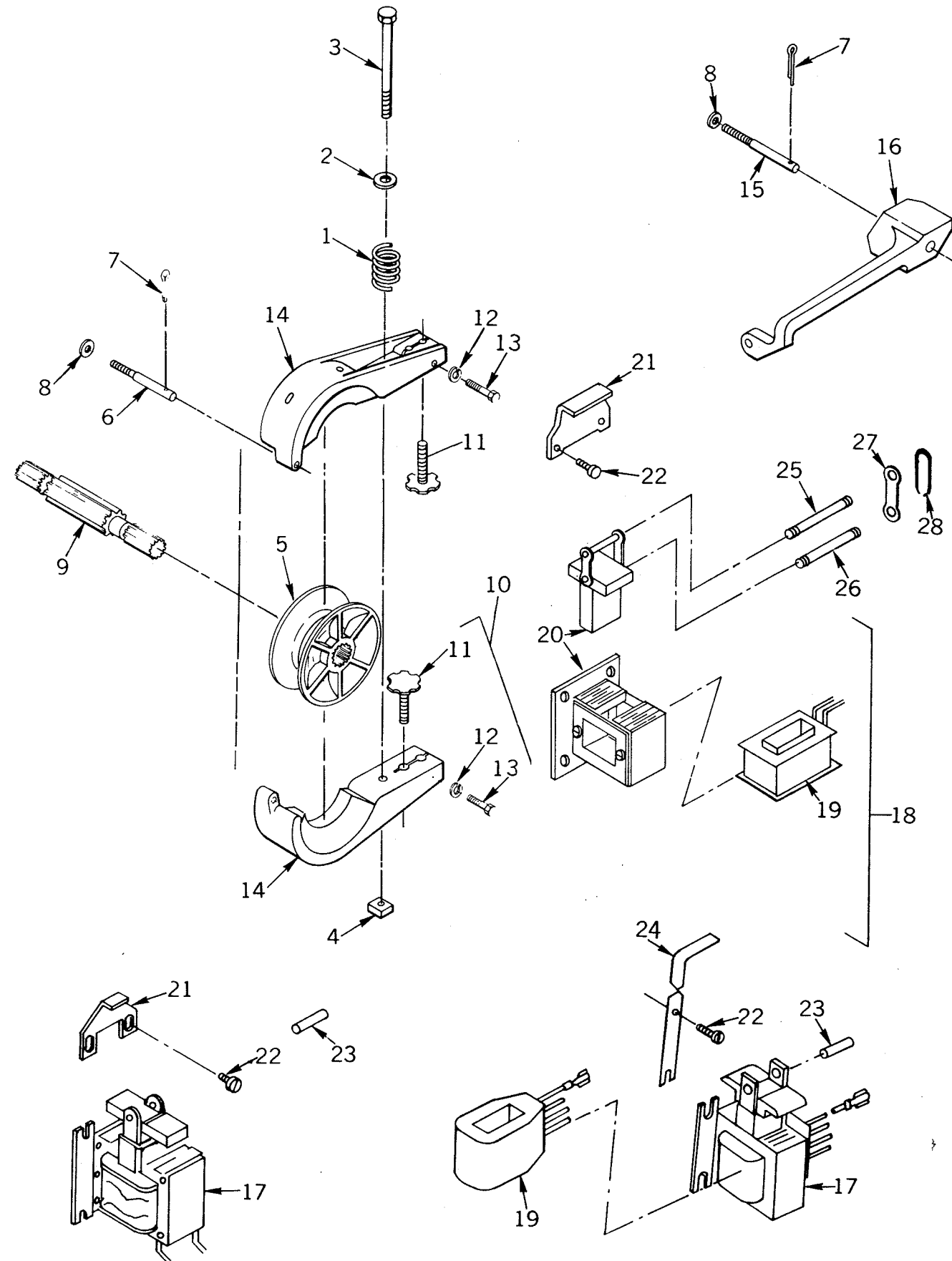


FIGURE 7-7B. BRAKE AND SOLENOID PARTS
(SHOE TYPE)

INDEX NO.	PART NAME
1	Spring, Brake
2	Washer, Flat
3	Screw, Brake Spring
4	Nut, Brake Spring
5*	Drum, Brake
6†	Stud, Brake
7	Cotter Pin
8	Washer, Stud Post
9*	Pinion, Driving (Reference—See Figure 7-4)
10	Brake Arm Assembly, Complete (Consists of Index Nos. 11-14)
11	Screw, Brake Adjustment
12	Lock Washer
13	Screw, Locking
14	Brake Arm and Lining Assembly
15†	Stud, Solenoid Arm
16	Arm, Solenoid
17	Solenoid Assembly
18	Solenoid Assembly (Consists of Index Nos. 19-20)
19	Coil
20	Frame and Plunger Assembly
21	Solenoid Stop
22	Screw, Solenoid Mount
23	Pin, Solenoid
24	Stop, Solenoid
25	Pin, Upper
26	Pin, Lower
27	Plate
28	Spring Clip

† Loctite sealant, type AV is added to the threaded portions of Index Nos. 6 and 15.

* Loctite sealant, type C is added to the spline portion of Index Nos. 5 and 9.

FOR PART NUMBERS SEE FIGURE 7-7B OF CURRENT PARTS LIST.

FIGURE 7-8A. PUSH-BUTTON
(SINGLE SPEED HOISTS WITH SERIAL NUMBERS JF-10799M4 AND BELOW)

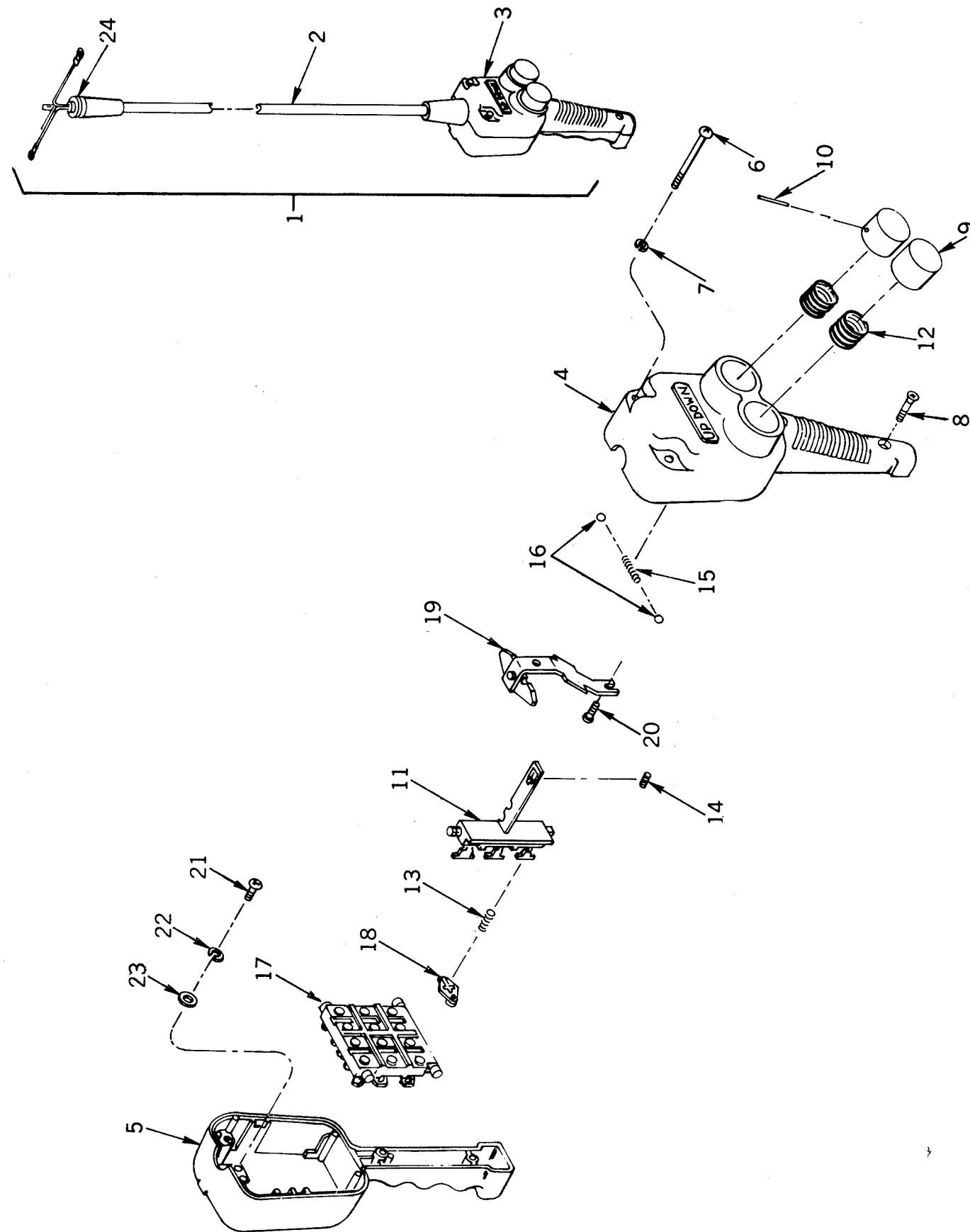
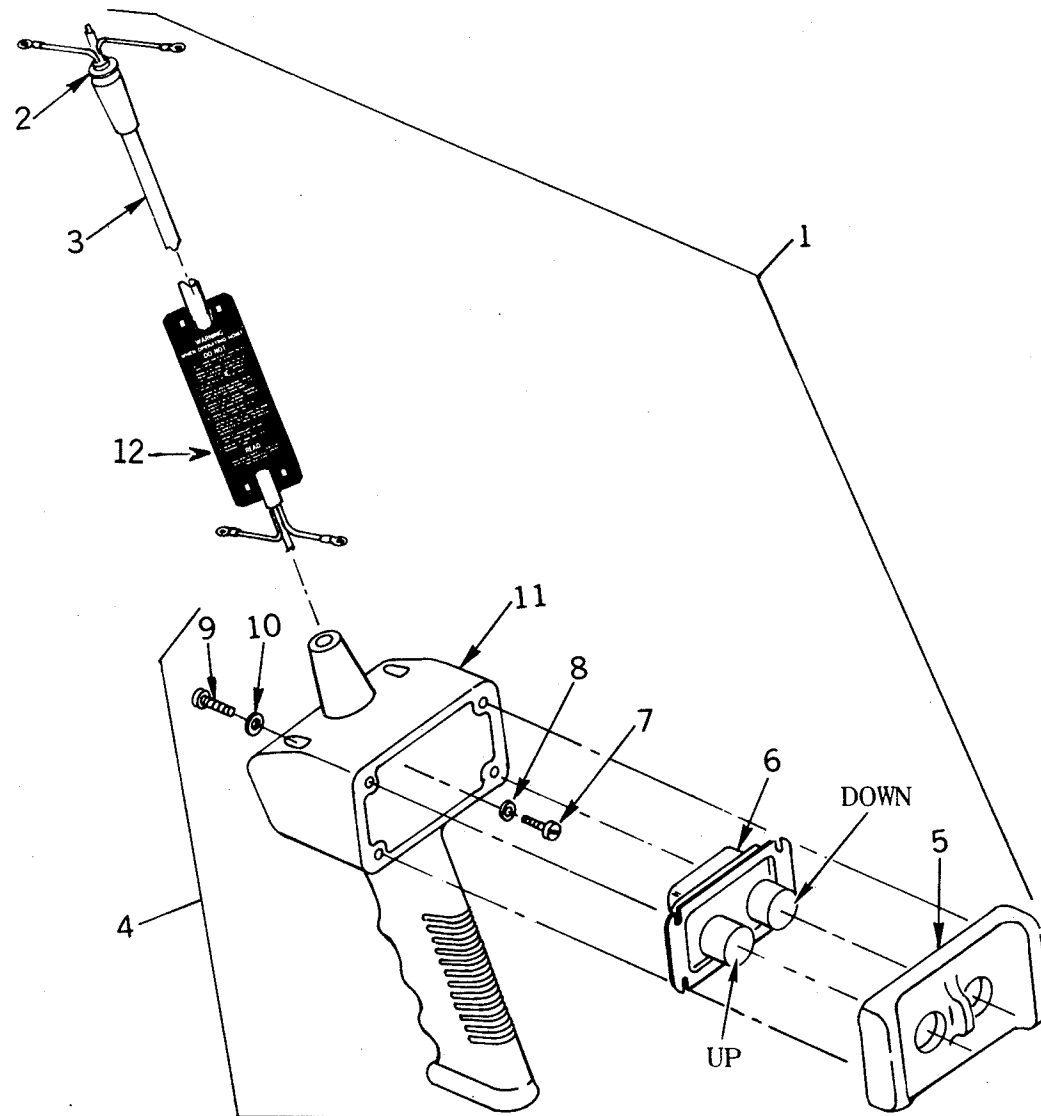


FIGURE 7-8A. PUSH-BUTTON
(SINGLE SPEED HOISTS WITH SERIAL NUMBERS JF-10799M4 AND BELOW)

INDEX NO.	PART NAME
1	Push Button and Cable Assembly (Consists of Index Nos. 2-24)
2	Push Button Cable Assembly
3	Push Button Station (Consists of Index Nos. 4-24)
4	Housing, Front
5	Housing, Back
6	Screw, Housing
7	Lock Washer, Housing Screw
8	Screw, Grip Handle
9	Push Button
10	Pin, Push Button
11	Switch Body Assembly
12	Spring, Push Button
13	Spring, Contact Bar
14	Spring, Body Shaft
15	Spring, Detent
16	Ball, Detent
17	Switch Block Assembly
18	Contact Bar Assembly
19	Interlock Assembly
20	Screw, Interlock Bracket
21	Screw, Cable Tie Down
22	Lock, Washer, Cable Tie Down
23	Flat Washer, Cable Tie Down
24	Washer, Push Button Cable

FOR PART NUMBERS SEE FIGURE 7-8A OF CURRENT PARTS LIST.

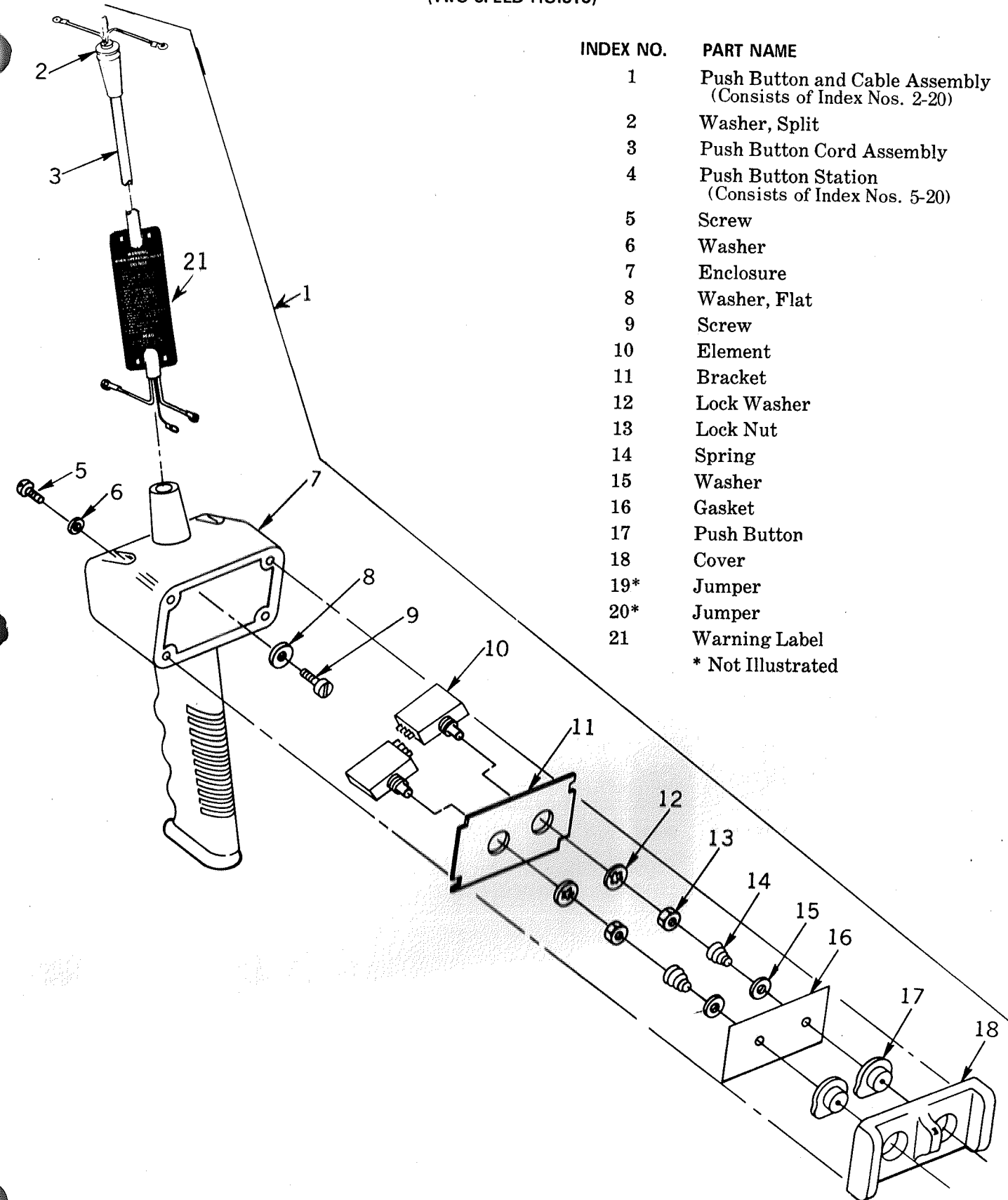
FIGURE 7-8B. PUSH-BUTTON
(SINGLE-SPEED HOISTS WITH SERIAL NUMBERS JF-64J001D AND ABOVE)



INDEX NO.	PART NAME
1	Push Button and Cable Assembly (Consists of Index Nos. 2-11)
2	Washer, Split
3	Cable, Push Button
4	Station, Push Button (Consists of Figure Nos. 5-11)
5	Cover
6	Element
7	Screw
8	Washer, Flat
9	Screw
10	Washer, Flat
11	Enclosure
12	Warning Label

FOR PART NUMBERS SEE FIGURE 7-8B OF CURRENT PARTS LIST.

FIGURE 7-8C. PUSH-BUTTON
(TWO SPEED HOISTS)



INDEX NO.	PART NAME
1	Push Button and Cable Assembly (Consists of Index Nos. 2-20)
2	Washer, Split
3	Push Button Cord Assembly
4	Push Button Station (Consists of Index Nos. 5-20)
5	Screw
6	Washer
7	Enclosure
8	Washer, Flat
9	Screw
10	Element
11	Bracket
12	Lock Washer
13	Lock Nut
14	Spring
15	Washer
16	Gasket
17	Push Button
18	Cover
19*	Jumper
20*	Jumper
21	Warning Label
* Not Illustrated	

FOR PART NUMBERS SEE FIGURE 7-8C OF CURRENT PARTS LIST.

