

CM[®] HTP & HTG

PLAIN & GEARED CLEVIS TROLLEYS

HTP & HTG | PLAIN & GEARED TYPE TROLLEY

CM HTP and HTG Clevis Trolleys can easily be installed in seconds for exact positioning or seamless traversing of loads with manual or powered hoists. These universal trolleys are compatible with nearly any Columbus McKinnon hoist brand or model.

FEATURES & BENEFITS

QUICK, SIMPLE INSTALLATION IN SECONDS

Adjust the flange width in a matter of seconds by turning the trolley axle, eliminating the need for loose parts, including spacer washers, when installing the trolley.

A TRULY UNIVERSAL TROLLEY

HTP and HTG Clevis Trolleys are compatible with nearly any Columbus McKinnon hoist brand or model, so you're free to use whatever manual or powered hoist you have or need. Trolleys with a capacity of 5 tons or less have A & B models adjustable to fit a wide range of beam widths and profiles.

SMOOTH, RELIABLE OPERATION

Adjustments are made by rotating the clevis load bar, ensuring the centered positioning of the hoist in the clevis to prevent creeping to the left or right. Trolley wheels are pre-lubricated with encapsulated ball bearings for smooth rolling. Trolleys are equipped with wrap-around steel trolley guards that protect the trolley and also provide drop protection. Rubber bumpers are available as optional equipment.

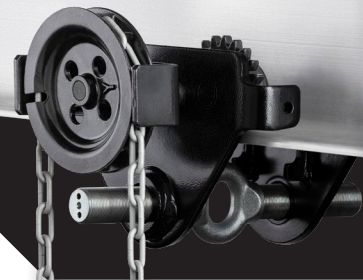
SPARK-RESISTANT MODELS

Available for all capacities, spark-resistant trolleys are equipped with bronze wheels, rubber bumpers as standard equipment, and stainless steel hand chain on geared trolleys.

HTP PLAIN TROLLEY



HTG GEARED TROLLEY



SPARK RESISTANT MODEL





HTP & HTG CLEVIS TROLLEYS

TECHNICAL DATA & DIMENSIONS

MODEL HTP

MODELS	STANDARD PART #	SPARK RESISTANT PART #	CAPACITY (METRIC TONS)	FLANGE WIDTH (in)		FLANGE THICKNESS (in)	MIN. RADIUS (in)	WEIGHT (lbs.)
				Min	Max			
HTP-500A & HTP-500ASR	HTP0050A	HTP0050ASR	1/2 ton	1.97	8.67	0.99	35.43	18
HTP-1000A & HTP-1000ASR	HTP0100A	HTP0100ASR	1 ton	1.97	8.67	0.99	35.43	20
HTP-2000A & HTP-2000ASR	HTP0200A	HTP0200ASR	2 ton	2.60	8.67	0.99	45.28	35
HTP-3000A & HTP-3000ASR	HTP0300A	HTP0300ASR	3 ton	2.92	8.67	0.99	55.12	71
HTP-5000A & HTP-5000ASR	HTP0500A	HTP0500ASR	5 ton	3.55	8.67	0.99	70.87	106
HTP-500B & HTP-500BSR	HTP0050B	HTO0050BSR	1/2 ton	6.30	11.82	1.58	35.43	23
HTP-1000B & HTP-1000BSR	HTP0100B	HTP0100BSR	1 ton	6.30	11.82	1.58	35.43	26
HTP-2000B & HTP-2000BSR	HTP0200B	HTP0200BSR	2 ton	6.30	11.82	1.58	45.28	43
HTP-3000B & HTP-3000BSR	HTP0300B	HTP0300BSR	3 ton	6.30	11.82	1.58	55.12	79
HTP-5000B & HTP-5000BSR	HTP0500B	HTP0500BSR	5 ton	7.09	11.82	1.58	70.87	115



MODEL HTG

MODELS	STANDARD PART #	SPARK RESISTANT PART #	CAPACITY (METRIC TONS)	FLANGE WIDTH (in)		FLANGE THICKNESS (in)	MIN. RADIUS (in)	WEIGHT (lbs.)
				Min	Max			
HTG-500A & HTG-500ASR	HTG0050A	HTG0050ASR	1/2 ton	1.97	8.67	0.99	35.43	21
HTG-1000A & HTG-1000ASR	HTG0100A	HTG0100ASR	1 ton	1.97	8.67	0.99	35.43	25
HTG-2000A & HTG-2000ASR	HTG0200A	HTG0200ASR	2 ton	2.60	8.67	0.99	45.28	40
HTG-3000A & HTG-3000ASR	HTG0300A	HTG0300ASR	3 ton	2.92	8.67	0.99	55.12	78
HTG-5000A & HTG-5000ASR	HTG0500A	HTG0500ASR	5 ton	3.55	8.67	0.99	70.87	114
HTG-500B & HTG-500BSR	HTG0050B	HTG0050BSR	1/2 ton	6.30	11.82	1.58	35.43	28
HTG-1000B & HTG-1000BSR	HTG0100B	HTG0100BSR	1 ton	6.30	11.82	1.58	35.43	31
HTG-2000B & HTG-2000BSR	HTG0200B	HTG0200BSR	2 ton	6.30	11.82	1.58	45.28	47
HTG-3000B & HTG-3000BSR	HTG0300B	HTG0300BSR	3 ton	6.30	11.82	1.58	55.12	86
HTG-5000B & HTG-5000BSR	HTG0500B	HTG0500BSR	5 ton	7.09	11.82	1.58	70.87	123
HTG-10000B & HTG-10000BSR	HTG1000B	HTG1000BSR	10 ton	4.93	12.21	1.58	70.87	229
HTG-20000B & HTG-20000BSR	HTG2000B	HTG2000BSR	20 ton	4.93	12.21	1.58	196.85	507

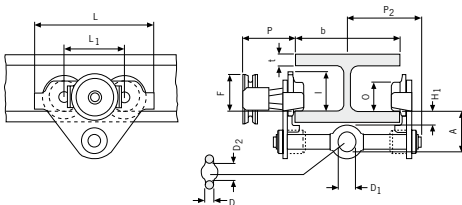


HTP 1/2 - 5 TON

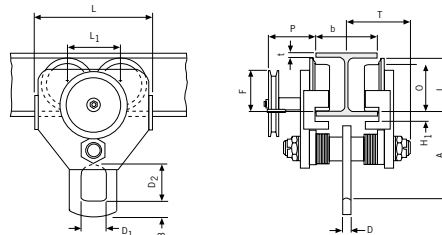
MODEL	HTP-500A & HTP-500ASR	HTP-1000A & HTP-1000ASR	HTP-2000A & HTP-2000ASR	HTP-3000A & HTP-3000ASR	HTP-5000A & HTP-5000ASR	HTP-500B & HTP-500BSR	HTP-1000B & HTP-1000BSR	HTP-2000B & HTP-2000BSR	HTP-3000B & HTP-3000BSR	HTP-5000B & HTP-5000BSR
A (in.)	3.03	3.25	3.88	4.49	5.22	3.62	3.84	4.47	5.08	5.81
D (in.)	0.63	0.67	0.87	1.02	1.30	0.63	0.67	0.87	1.02	1.30
D1 (in.)	0.98	1.18	1.57	1.89	2.36	0.98	1.18	1.57	1.89	2.36
D2 (in.)	1.18	1.38	1.85	2.28	2.76	1.18	1.38	1.85	2.28	2.76
H1 (in.)	1.20	1.20	1.20	1.18	1.18	1.79	1.79	1.79	1.77	1.77
I (HTP) (in.)	2.81	2.81	3.76	5.16	5.61	2.81	2.81	3.76	5.16	5.61
L (in.)	10.24	10.24	12.20	15.35	17.72	10.24	10.24	12.20	15.35	17.72
L1 (in.)	5.12	5.12	5.91	7.09	8.23	5.12	5.12	5.91	7.09	8.23
O (in.)	2.36	2.36	3.15	4.41	4.92	2.36	2.36	3.15	4.41	4.92
P2 (in.)	5.75	5.91	6.10	6.30	6.59	7.36	7.36	7.46	7.54	7.54
L3 (in.)	13.62	13.62	15.59	18.74	21.89	13.62	13.62	15.59	18.74	21.89

HTG 1/2 - 20 TON

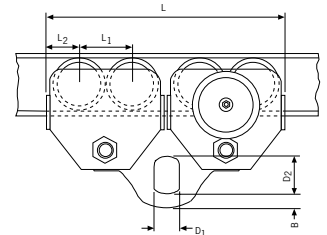
MODEL	HTG-500A & HTG-500ASR	HTG-1000A & HTG-1000ASR	HTG-2000A & HTG-2000ASR	HTG-3000A & HTG-3000ASR	HTG-5000A & HTG-5000ASR	HTG-500B & HTG-500BSR	HTG-1000B & HTG-1000BSR	HTG-2000B & HTG-2000BSR	HTG-3000B & HTG-3000BSR	HTG-5000B & HTG-5000BSR
A (in.)	3.03	3.25	3.88	4.49	5.22	3.62	3.84	4.47	5.08	5.81
D (in.)	0.63	0.67	0.87	1.02	1.30	0.63	0.67	0.87	1.02	1.30
D1 (in.)	0.98	1.18	1.57	1.89	2.36	0.98	1.18	1.57	1.89	2.36
D2 (in.)	1.18	1.38	1.85	2.28	2.76	1.18	1.38	1.85	2.28	2.76
F (HTG) (in.)	3.60	3.60	3.56	4.23	5.89	3.60	3.60	3.56	4.23	5.89
H1 (in.)	1.20	1.20	1.20	1.18	1.18	1.79	1.79	1.79	1.77	1.77
I (HTG) (in.)	3.01	3.01	3.86	5.22	5.85	3.01	3.01	3.86	5.22	5.85
L (in.)	10.24	10.24	12.20	15.35	17.72	10.24	10.24	12.20	15.35	17.72
L1 (in.)	5.12	5.12	5.91	7.09	8.23	5.12	5.12	5.91	7.09	8.23
O (in.)	2.36	2.36	3.15	4.41	4.92	2.36	2.36	3.15	4.41	4.92
P (HTG) (in.)	4.33	4.33	4.33	4.33	4.33	4.33	4.33	4.33	4.33	4.33
P2 (in.)	5.75	5.91	6.10	6.30	6.59	7.36	7.36	7.46	7.54	7.54
L3 (in.)	13.62	13.62	15.59	18.74	21.89	13.62	13.62	15.59	18.74	21.89
P3 (in.)	7.64	7.64	7.64	7.68	7.68	7.64	7.64	7.64	7.68	7.68



Model HTP/G 1/2 - 5 ton



Model HTG 10 ton



Model HTG 20 ton

Note: 20-ton HTG trolleys use dual 10-ton trolleys with common suspension clevis



PARTNERS IN MOTION CONTROL.

Columbus McKinnon is focused on becoming the leading industrial technology company in safe and productive motion control. Together, with our network of value-add Channel Partners, we are uniquely positioned to offer solutions to solve our customer's high-value problems. From variable speed electric chain hoists featuring CM HI-Tech™, our exclusive performance interface platform, to the CM Tornado 360™ and its revolutionary Sidewinder™ lever handle, Columbus McKinnon is engineering motion control solutions for tomorrow's workforce.

BE SAFE. GET TRAINED.

Columbus McKinnon is committed to providing expert safety training on the proper use and inspection of rigging and overhead lifting equipment. Our company offers comprehensive programs at our national training centers as well as on-site at your facility. Courses include hoist and rigging safety and inspection; crane operation and safety; and load securement.

Columbus McKinnon's corporate headquarters in Getzville, New York, is home to our state-of-the-art **Niagara Training Center**. The 3,000-square-foot facility is dedicated to training Channel Partners and end users on the safe and proper use of hoist and rigging products. The Center offers a one-of-a-kind training experience on chain and rigging equipment with more than 75 manual and powered hoists, enclosed track systems and our 50-foot-wide crane system with 3-ton wire rope hoist.

CMCO UNIVERSITY™

Win in the marketplace with CMCO University. This intense program is designed to give Channel Partners intimate product and application knowledge that they can use to advise their end-user customers during the product selection and sales processes.



USA 800.888.0985 • 716.689.5400 • fax: 716.689.5644

CANADA 877.264.6478 • FAX: 877.264.6477

COLUMBUSMCKINNON.COM



SHARPSHOOTER

TOOLS FOR SUCCESS

CM[®] HTP & HTG PLAIN & GEARED CLEVIS TROLLEY

HTP & HTG | PLAIN & GEARED TYPE TROLLEY

The CM HTP and HTG Clevis Trolley can easily be installed in seconds for the exact positioning or seamless traversing of loads. This universal trolley is compatible with nearly any Columbus McKinnon hoist brand or model.

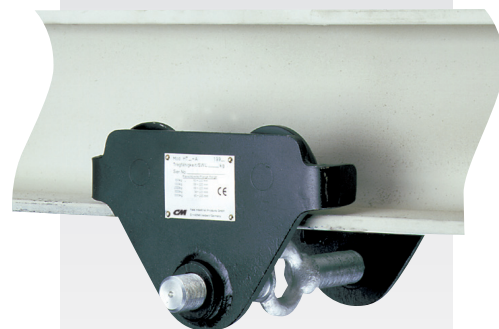
QUICK, SIMPLE INSTALLATION IN SECONDS

Adjust the flange width in a matter of seconds by turning the trolley axle, eliminating the need for loose parts, including spacer washers, when installing the trolley.

A TRULY UNIVERSAL TROLLEY

The HTP and HTG Clevis Trolleys are compatible with nearly any CMCO brand or hoist model, so you're free to use whatever manual or powered hoist you have or need. Trolleys 5-ton capacity and under have A & B models adjustable to fit a wide range of beam widths and profiles. Trolleys are equipped with wrap around steel trolley guards which protect the trolley and also provide drop protection. Rubber Bumpers are available as optional equipment.

HTP PLAIN TROLLEY



HTG GEARED TROLLEY



CM	CM HTP & HTG CLEVIS TROLLEY	CBT TROLLEY	633 TROLLEY
CAPACITY RANGE	1/2 ton to 5 ton capacity upon initial launch. Additional capacities up to 20 ton coming soon!	1/4 ton to 5 ton capacity	1/2 ton to 5 ton capacity
INSTALLATION	Easy installation. No spacer washers required. Just rotate the threaded rod. Installation in seconds.	Uses spacer washers. Installation requires a longer set up and loose parts.	Uses spacer washers. Installation requires a longer set up and loose parts.
HEADROOM	Threaded rod with eyebolt suspension results in lower headroom compared to CBT & 633 trolleys. See tables on following page.	Standard Headroom	Standard Headroom
BEAM FLANGE RANGE	Trolleys are available in standard (A) models to fit beam flanges up to 8.67" and also wide flange (B) models to fit beam flanges up to 11.82". See tables on following page.	Standard models only. See tables on following page.	Standard models only. See tables on following page.
WEIGHT	Lower overall weight on most capacities vs. CBT & 633 Trolley contributes to the easy of installation. See tables on following page.	Higher overall weight than CM HTP/HTG trolley when comparing similar models & capacities. See tables on following page.	Higher overall weight than CM HTP/HTG trolley when comparing similar models & capacities. See tables on following page.

TECHNICAL DATA & DIMENSIONS

		CAPACITY (METRIC TONS)	FLANGE WIDTH (IN.)		THICKNESS (IN)	MIN RADIUS (IN)	WHEEL DIA. (IN.)	PLAIN TROLLEY WEIGHT (LBS.)	GEARED TROLLEY WEIGHT (LBS.)
			MIN	MAX					
HTP/G TROLLEY	HTP/G 500A	1/2 ton	1.97	8.67	0.99	35.43	2.36	17.64	21.39
	HTP/G 1000A	1 ton	1.97	8.67	0.99	35.43	2.36	19.85	24.70
	HTP/G 2000A	2 ton	2.60	8.67	0.99	45.28	3.15	35.28	39.69
	HTP/G 3000A	3 ton	2.92	8.67	0.99	55.12	4.41	70.56	78.06
	HTP/G 5000A	5 ton	3.55	8.67	0.99	70.87	4.92	105.84	114.22
	HTP/G 500B	1/2 ton	6.30	11.82	1.58	35.43	2.36	23.37	27.78
	HTP/G 1000B	1 ton	6.30	11.82	1.58	35.43	2.36	26.46	31.09
	HTP/G 2000B	2 ton	6.30	11.82	1.58	45.28	3.15	42.56	46.97
	HTP/G 3000B	3 ton	6.30	11.82	1.58	55.12	4.41	78.94	86.44
	HTP/G 5000B	5 ton	7.09	11.82	1.58	70.87	4.92	115.10	123.48
CBT TROLLEY	CBTP0500	1/2 ton	2.00	8.70	N/A	27.00	2.36	19.00	N/A
	CBTP/G0100	1 ton	2.30	8.70	N/A	36.00	2.36	26.00	40.00
	CBTP/G0200	2 ton	2.30	8.70	N/A	45.00	3.15	46.00	60.00
	CBTP/G0300	3 ton	3.00	8.70	N/A	55.00	4.41	86.00	120.00
	CBTP/G0500	5 ton	3.50	8.70	N/A	70.00	4.92	130.00	148.00
633 TROLLEY	3302	1/2 ton	2.50	5.625	1.03	35.00	2.28	17.00	N/A
	3304	1 ton	3.00	8.00	1.03	35.00	3.47	36.00	N/A
	3306	2 ton	3.625	8.00	0.78	59.00	3.94	53.00	N/A
	3307	3 ton	4.00	8.00	1.19	71.00	5.13	100.00	N/A
	3309	5 ton	4.625	8.00	2.13	94.00	6.13	175.00	N/A



COLUMBUSMCKINNON.COM

USA: 800.888.0985 • 716.689.5400 • Fax: 716.689.5644

© 2020 Columbus McKinnon Corporation. All Rights Reserved.