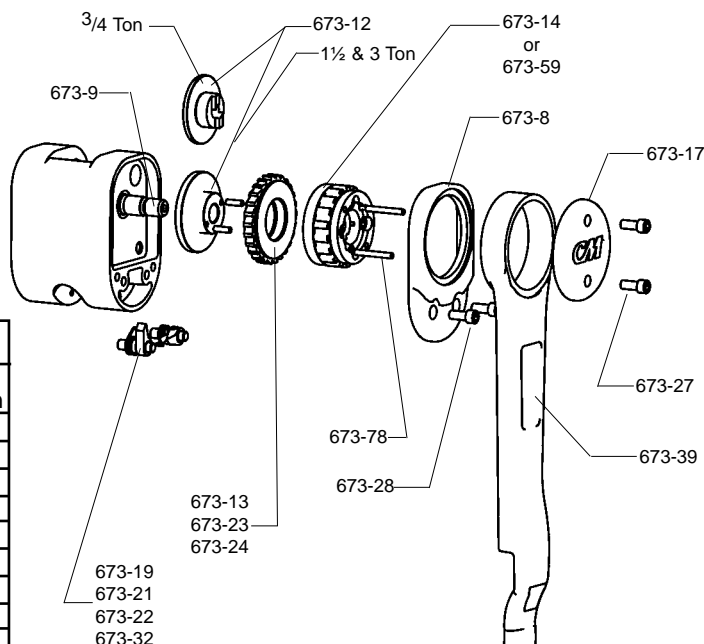


Supplement to Short Handle Puller Manual No. 673-B

To improve overall performance of the Short Handle Puller, the brake has been redesigned to remove the brake nut (673-37) and brake nut cotter pin (673-38). With the redesigned brake, locking pins (676-78) pass through the ratchet hub (673-14) or load limiter (673-59) to engage stops on the friction hub (673-12) and thus eliminates the need for the brake nut and brake nut cotter pin used on older units. For proper operation of the brake, the locking pins in the ratchet hub must be correctly positioned with respect to the stops on the friction hub. As a result, the brake instructions under item L on page 8 and the exploded view and parts list of manual number 673-B and the brake instructions inside the lever cover (673-17) do not apply. This supplement should be used for adjusting the redesigned brake and ordering repair parts for it.

Below is a partial exploded view that shows the proper relationship of the parts and parts list for the Short Handle Puller with the redesigned brake. Please use these when ordering repair parts and refer to page 12 of manual number 673-B for the information needed to order the repair parts.



No. Key No.	Req'd.	Part Name	Part Number		
			3/4 Ton	1½ Ton	3 Ton
673-8	1	Brake Cover with Seal	73306	73329	
673-9	1	Pinion	73345	73348	
673-12	1	Friction Hub	73343	73350	
673-13	2	Friction Disc	73709	73742	
673-14	1	Ratchet Hub	73338	73323	
673-17	1	Lever Cover	73351	73353	
673-19	2	Pawl	73700	73728	
673-21	2	Pawl Spring	73713	73731	
673-22	2	Pawl Shaft	73315	73733	
673-23	1	Ratchet	73313	73326	
673-24	1	Ratchet Bushing	73710	73741	
673-28	2	Lever Cover Screw	73718	73715	
673-28	2	Cover Screw	73715	73736	
673-32	1	Pawl Snap Ring	73721	73738	
673-39	1	Lever Assembly	73600	73604	
673-59	2	Load Limiter	7310P	7311P	
673-78	2	Lock Pin	73340	73342	

To assemble and adjust the redesigned brake, follow steps A through K of the Assembly instructions on pages 7 and 8 of manual number 673-B and then:

1. Place the second friction disc (673-13) on top of the ratchet.
2. Thread the ratchet hub (673-14) or Load Limiter (673-59) onto the pinion (673-9).
3. Insert the two locking pins (676-78) into the holes of the ratchet hub or Load Limiter.
4. Holding the pinion steady, rotate the ratchet hub or Load Limiter from the stop in the full clockwise position to the stop in the full counterclockwise position. From stop to stop there should be 10 to 45° of rotation.
5. If the rotation does not fall within this range, remove the locking pins, ratchet hub or Load Limiter, pawl assemblies (see step J), friction discs, ratchet and ratchet bushing. Slide the friction hub partially off of the pinion until the splines disengage. Rotate the friction hub slightly clockwise if the rotation is more than 45° or counterclockwise if the rotation is less than 10°. Repeat steps 1 through 4 until the rotation from stop to stop is 10 to 45°.

Note: The ratchet hub or Load Limiter can be started onto the thread of the pinion in one of four positions. Each time the ratchet hub or Load Limiter is rethreaded onto the pinion, maintain the same orientation.
6. Install the pawl assemblies per step K and follow steps M through P to complete the assembly. Then test the hoist per the instructions on page 9.